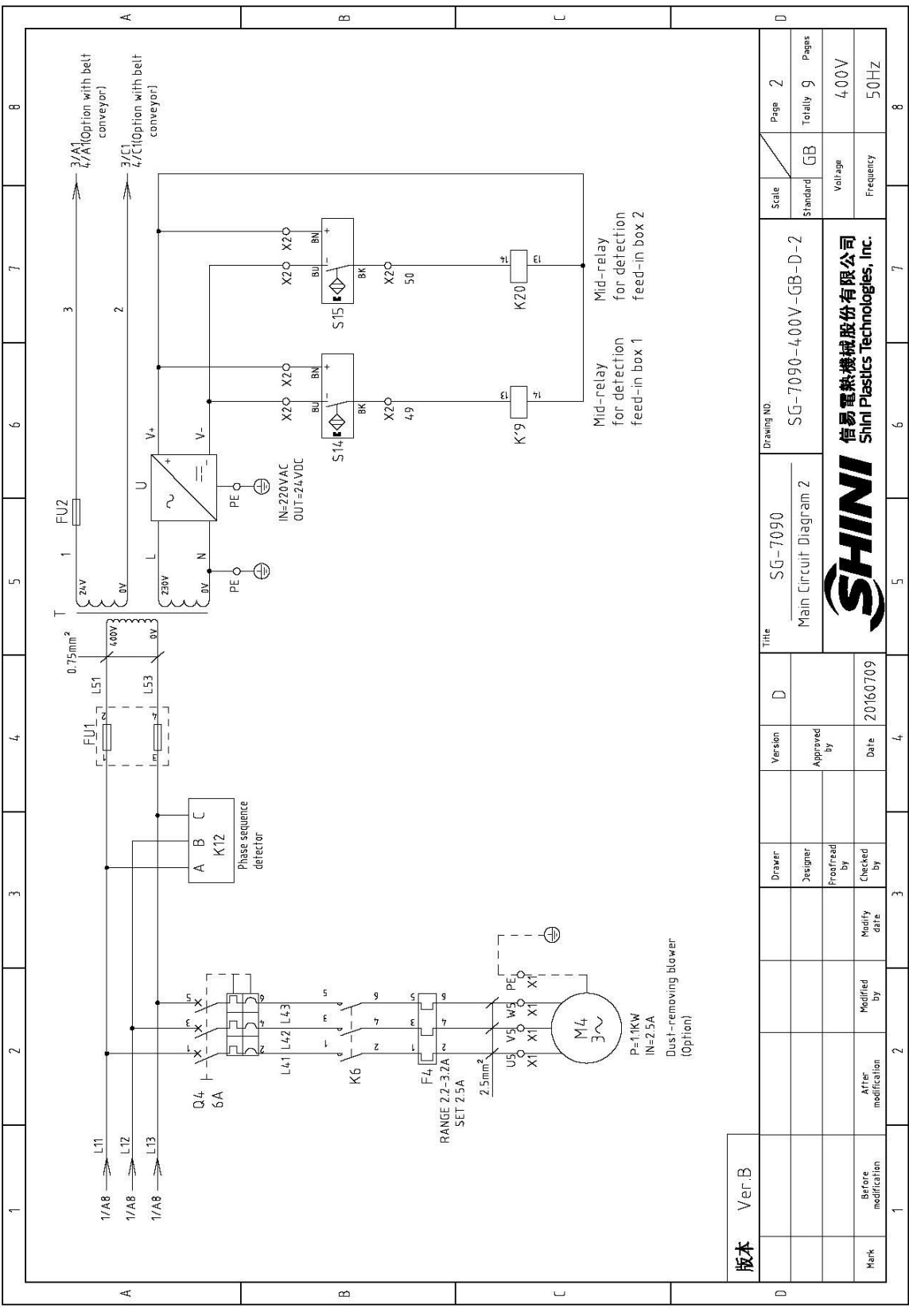


版本 Ver.B

Mark	Before modification	Modified by	Modified date	Checked by	Approved by	Version	D	Title	SG-7090	Drawing NO.	SG-7090-400V-GB-D-1	Page	1
	After modification		20160709					Main Circuit Diagram 1				Totally	9
												Standard	GB
												Voltage	400V
												Frequency	50Hz
												Scale	

SHINI
信易電熱機械股份有限公司
Shini Plastics Technologies, Inc.

1 2 3 4 5 6 7 8
A A C D



版本 Ver.B

Mark	Before modification	After modification	Modified by	Modify date	Designer	Version	Drawer	Title	Drawing NO.	Scale	Page
								SG-7090 Main Circuit Diagram 2	SG-7090-400V-GB-D-2	Standard	2
Check by	Free/Read by	Approved by	Date							GB	Totally 9
			20160709								Pages
											400V
											50Hz
1	2	3	4	5	6	7	8				

SHINI
信易電熱機械股份有限公司
Shini Plastics Technologies, Inc.

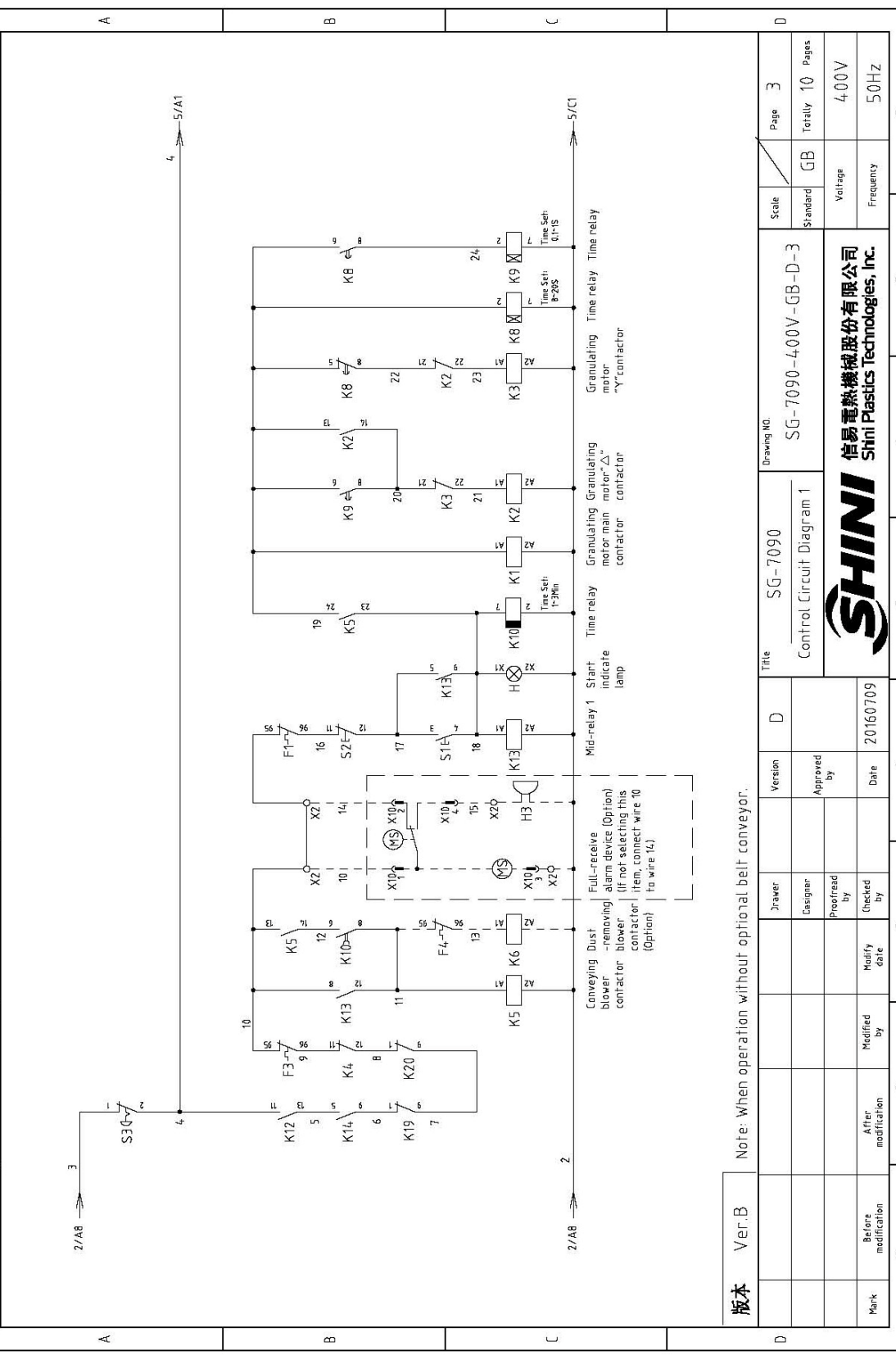
版本 Ver.B

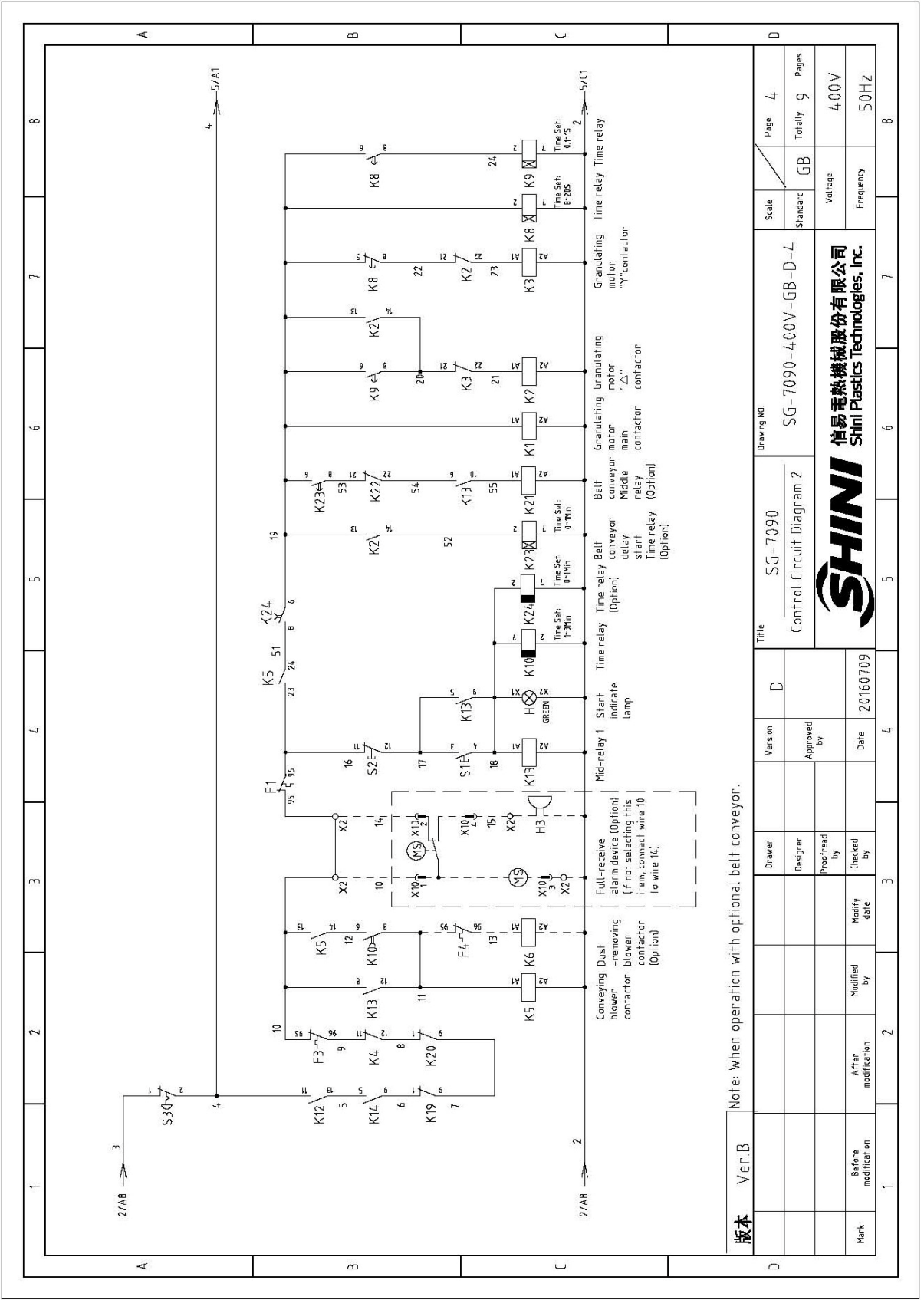
Mark	Before modification	After modification	Modified by	Modify date	Checked by	Date	20160709
Proofread by							
Designer							
Version	D						

Note: When operation without optional belt conveyor.

Title	SG-7090	Drawing NO.	SG-7090-400V-GB-D-3
Control Circuit Diagram 1		Scale	Standard GB
		Page	3
		Totally	10
		Pages	400V
		Frequency	50Hz

SHINI 信易電熱機械股份有限公司
Shini Plastics Technologies, Inc.

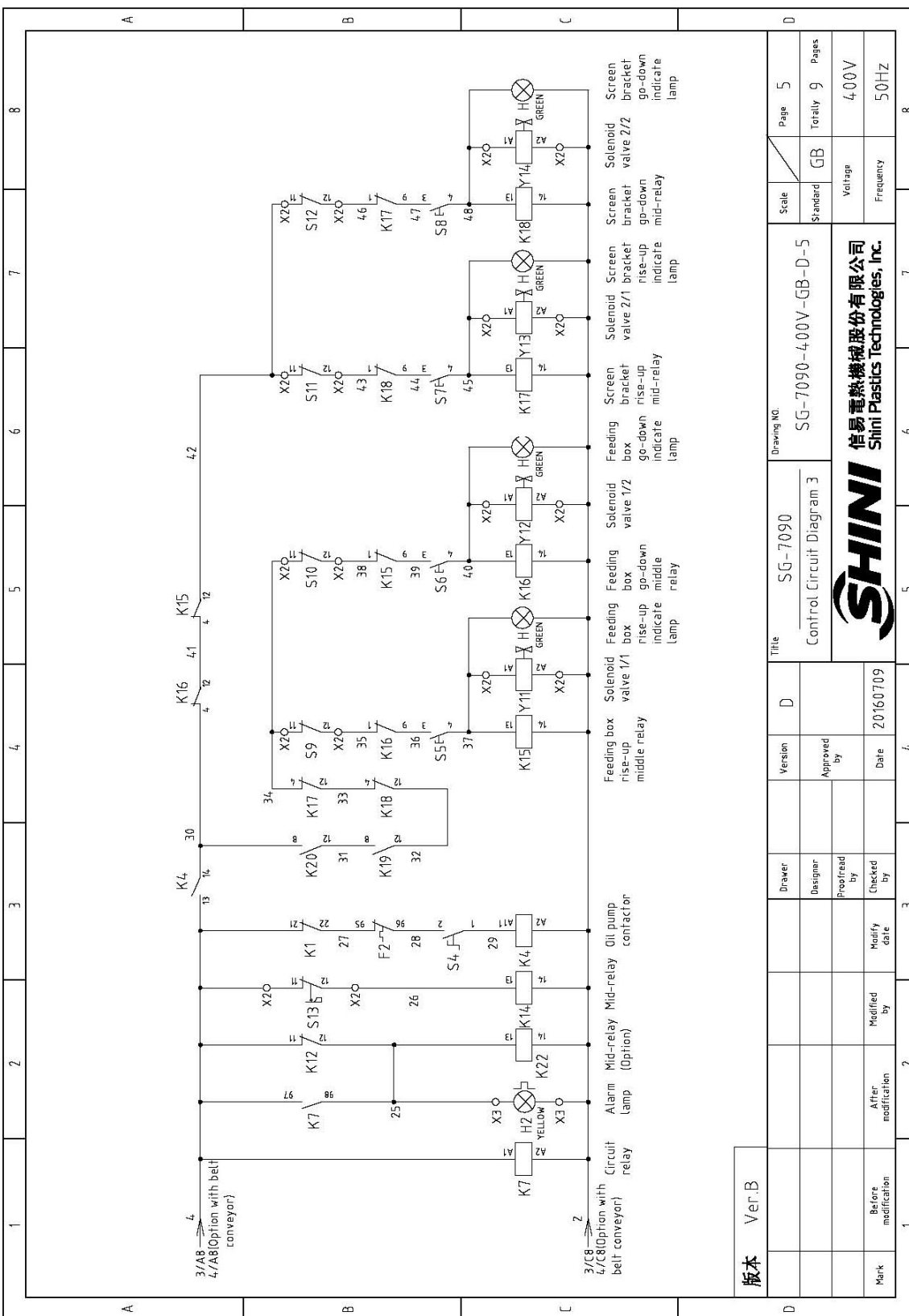





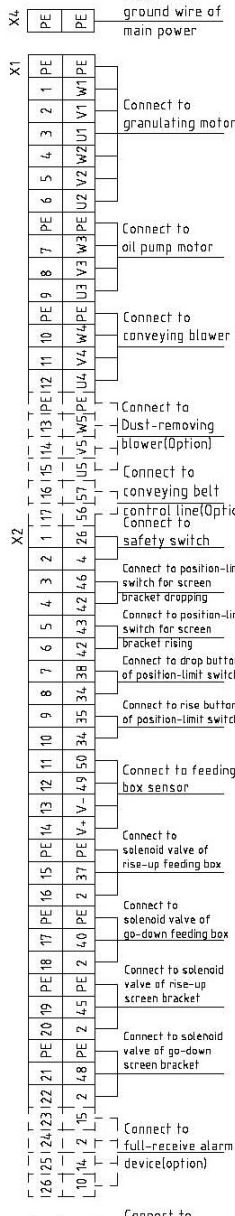
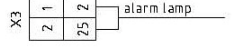
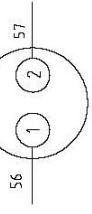
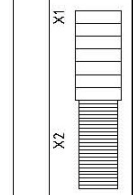
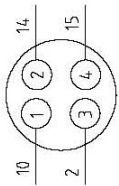
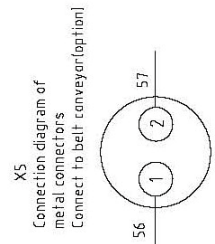
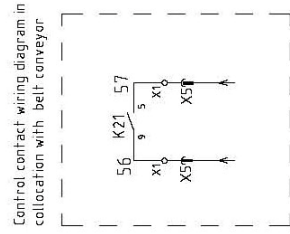
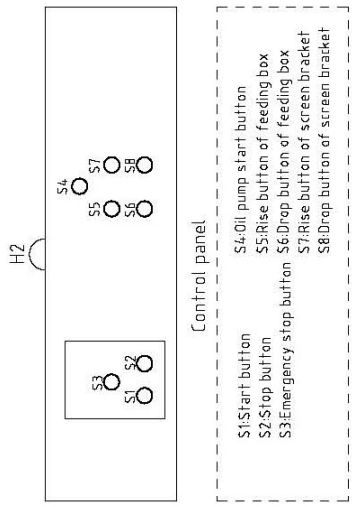
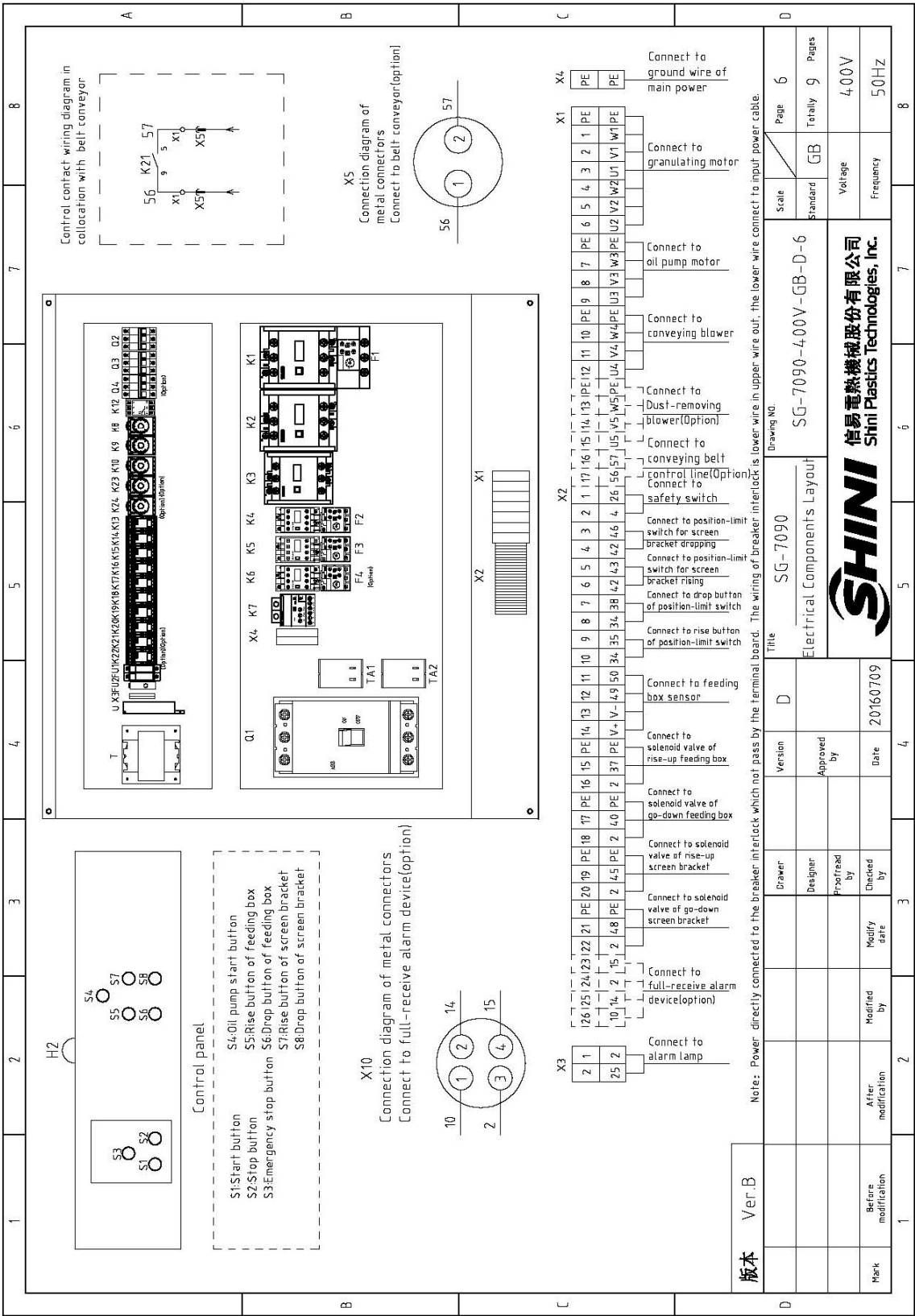
版本 Ver.B Note: When operation with optional belt conveyor.

Mark	Before modification	After modification	Modified by	Modify date	Checked by	Proofread by	Designer	Drawer	Version	D	Title	SG-7090 Control Circuit Diagram 2	SG-7090-400V-GB-D-4	Scale	GB	Page	4
							Approved by									Totally	9
							Date	20160709								Voltage	400V
																Frequency	50HZ





版本 Ver.B		Drawing No.		Page 5	
Drawer	Version	Title		Scale	Pages
Designer	Approved by	SG-7090		Standard	Totally 9
Prepared by	Date	Control Circuit Diagram 3		Valage	400V
Checked by	20160709	SG-7090-400V-GB-D-5		Frequency	50Hz
Modify date		 信易電熱機械股份有限公司 Shini Plastics Technologies, Inc.			
Mark	Before modification	2	5	6	7
	After modification	3	4	8	8




版本 Ver.B

Note: Power directly connected to the breaker interlock which not pass by the terminal board. The wiring of breaker interlock is lower wire in upper wire out; the lower wire connect to input power cable.

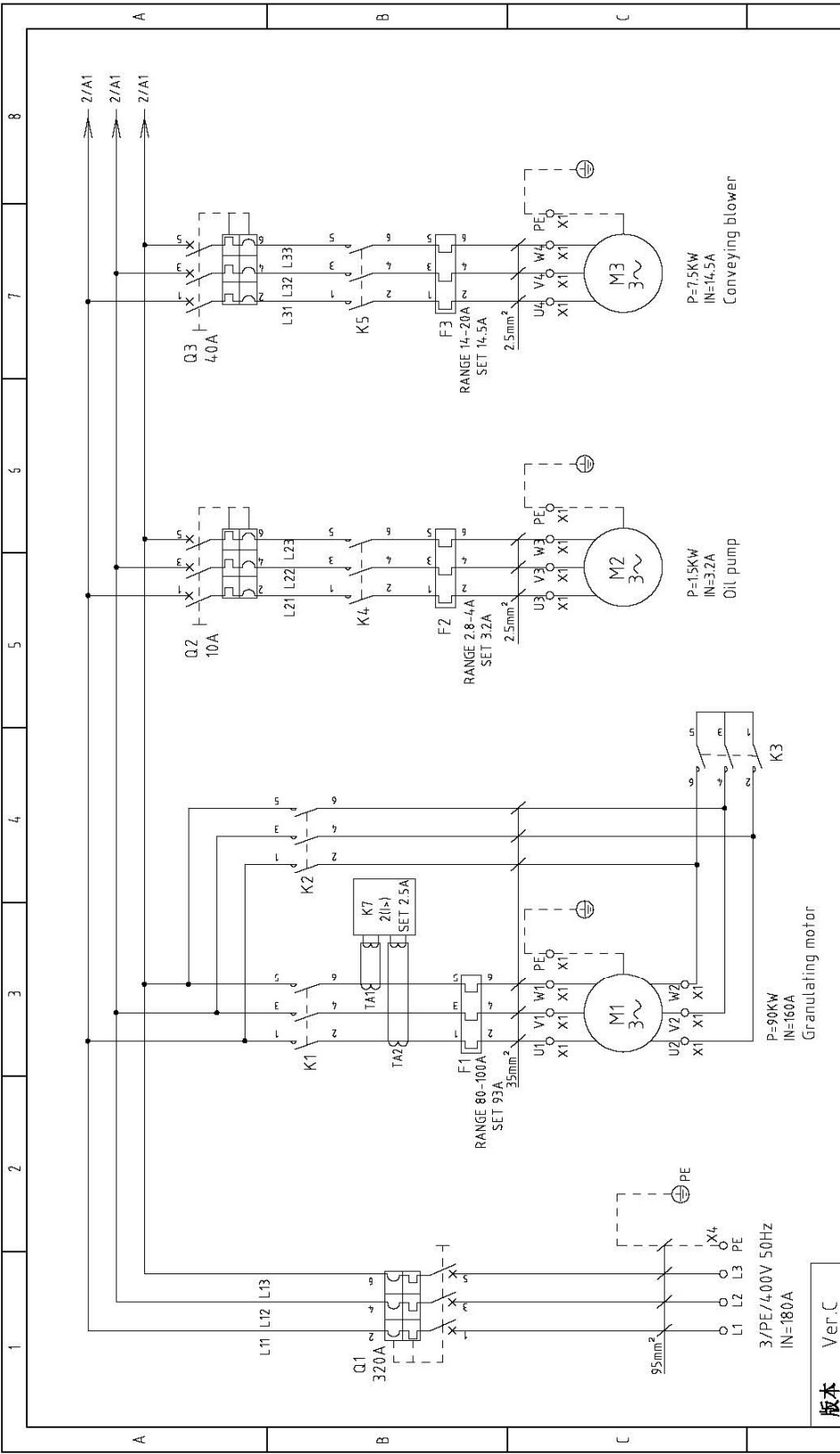
Mark	Before modification	After modification	Modified by	Modify date	Checked by	Date	20160709
Designer	Designer	Approved by					
Version	D	Version	D	Version	D	Version	D
Title		SG-7090		Drawing NO.		SG-7090-400V-GB-D-6	
Electrical Components Layout		Scale		Page		6	
		Standard		Totally		9	
		Voltage		Frequency		400V	
		Frequency				50HZ	



1	2	3	4	5	5	7	8		
NO.	Symbol	Name	Manufacturer	Type	Specification	Number	Material number	Remark	
1	Q1	Gate-circuit breaker	ABB	A2B250TMF250/25003PFF	250A	1	YE4.1252800000		
2	Q2	Circuit breaker	TECO	BM-63C/3P	10A	1	YE4.0301003000		
3	Q3	Circuit breaker	TECO	BM-63C/3P	40A	1	YE4.0304003000		
4	Q4	Circuit breaker	TECO	BM-63C/3P	6A	1	YE4.0306003000	(3)	
5	K1,K2	Contactor	SIEMENS	3RT504-6-1AC20	24V 50/60Hz	2	YE00504602600		
6		Assistant point	SIEMENS	3RH5921-1CA01	1NC	3	YE00592110100		
7		Assistant point	SIEMENS	3RH5921-1CA10	1NO	1	YE005921108000		
8		Assistant point	SIEMENS	3RH5921-1CA10	1NO	1	YE005921108000	(2)	
9	K3	Contactor	SIEMENS	3RT504-5-1AC20	24V 50/60Hz	1	YE00504502600		
10	K4	Contactor	SIEMENS	3RT6015-1AB02	24V 50/60Hz	1	YE00601502600		
11		Assistant point	SIEMENS	3RH6911-1AA10	1NO	2	YE00691110000		
12	K5	Contactor	SIEMENS	3RT6025-1AC20	24V 50/60Hz	1	YE00602502600		
13		Assistant point	SIEMENS	3RH6911-1AA10	1NO	1	YE00691110000	(3)	
14	K6	Contactor	SIEMENS	3RT6015-1AB02	24V 50/60Hz	1	YE00601502600		
15	K7	Circuit relay	SCHNEIDER	LT4-7068A	0.5-6A (24VAC/DC)	1	YE04-04-7601200		
16	K8	Timer relay	YUYUN	TH3A-NAB	24VAC/DC 0-60S	1	YE866024-00300		
17	K9	Timer relay	YUYUN	TH3M-NAB	24VAC/DC 0-3S/60Min	1	YE86723000000		
18	K10	Timer relay	YUYUN	TRF-N	24VAC/DC 0-3Min	1	YE860324-00000		
19	K12	Phase sequence protector	CHAOSHI	ABJ-10W	400V 50/60Hz	1	YE03103800000		
20	K13	Middle relay	Honeywell	GR-2L-AC24V	24VAC	1	YE030224-00300		
21	K13	Middle relay	Honeywell	GR-4C-AC24V	24VAC	1	YE0304-24-00300	(2)	
22	K14-K18	Middle relay	Honeywell	GR-2C-AC24V	24VAC	5	YE030224-00300		
23	K19,K20	Middle relay	WEIDMULLER	DRM270024LT	24VDC	2	YE032724-00000		
24	K21,K22	Middle relay	Honeywell	GR-2L-AC24V	24VAC	2	YE030224-00300	(2)	
25	K23	Timer relay	YUYUN	TH3A-NAB	24VAC/DC 0-60S	1	YE866024-00300	(2)	
版本 Ver.B Notes: (1)Means it's not the material inside the control box.(2) Stand for conveying belt optional accessories.									
D		Title SG-7090 Electrical Components List 1		Drawing No. SG-7090-4.00V-GB-D-7		Scale GB Standard GB		Page 7 Totaly 9 Pages	
Mark		Before modification	After modification	Modify date	Checked by	Approved by	Date	 信易電熱機械股份有限公司 Shini Plastics Technologies, Inc.	
1	2	3	4	5	5	7	8	Voltage 4.00V Frequency 50HZ	

1		2		3		4		5		6		7		8	
NO.	Symbol	Name	Manufacturer	Type	Specification	Number	Material number	Remark							
26	KZ4	Timer relay	YUYUN	TRF-N	24VAC/DC 0-3Min	1	YE86032400000	(2)							
27	F1	Overload relay	SIEMENS	3RU5146-4MB0	80-100A	1	YE01514680000								
28	F2	Overload relay	SIEMENS	3RU6116-1EB0	2.8-4A	1	YE01160280000								
29	F3	Overload relay	SIEMENS	3RU6126-4BB0	14-20A	1	YE01260140000								
30	F4	Overload relay	SIEMENS	3RU6116-1DB0	2.2-3.2A	1	YE01160220000	(3)							
31	FU1	Fuse	CHINT	RT28-32	2P	1	YE41032200000								
32	FU2	Fuse core	MRO	10x38 580V	2A	2	YE46002000100								
33	FU2	Fuse	YINDA	FS-10	----	1	YE41001000000								
34	FU2	Fuse core	----	6x30	10A	1	YE46631040000								
35	TA1,TA2	Current mutual inductance	RATIO	RCT-35	150/5A	2	YE04150500000								
36	T	Transformer	BAYUN	IN=400V OUT=24V / 230V	24V 350VA / 230V 350mA	1	YE70040005800								
37	H2	Alarm lamp	SHINI	LED-3051	24VAC	1	YE83305100900	(1)							
38	U	DC power	MEANWELL	EPR-35-24.15A	IN100-240V OUT24V	1	YE71352400100								
39	S1, S5-S8(H)	Start button	SCHNEIDER	XB2BW33MIC	4.00VAC	5	YE11233100000								
40	S2	Stop button	SCHNEIDER	XB2BA22C	4.00VAC	1	YE11222000000								
41	S3	Emergency stop button	SCHNEIDER	XB2BS542C	4.00VAC	1	YE11254200000								
42	S4	Selection switches	ABB	C2SS2-10B-10	UI=300V Ith=5A	1	YE12210100000								
43	S9,S10,S11,S12	Position limit switch	SCHMERSAL	TS236-11Z-M20	500V	4	YE10361200000	(1)							
44	S13	Safety switch	SCHMERSAL	AZ17-11ZK	AZ-17	1	YE16171100000	(1)							
45	S14,S15	Sensor	DELIN	DL-12	24VDC	2	YE15122400000	(1)							
46	X1	Terminal board	PHOENIX	SAK-35	--	6	YE61350040000								
47			PHOENIX	TB35 PE I	--	1	YE61353500000								
48			--	TB25B I	32A	6	YE61250040000								
49			--	TB2.5 PE I	--	2	YE61253500000								
50			--	TB2.5B I	32A	3	YE61250040000	(3)							
版本		(3)Means optional accessories of dedusting blower; (4) Means optional accessories of full-receive alarm device.													
Ver.B		Drawer		Version		Title		Drawing NO		Scale		Page		8	
						SG-7090		SG-7090-4.00V-GB-D-8		Standard		GB		Totally 9	
		Designer		Approved by		Electrical Components List 2				Voltage		4.00V		Pages	
		Proofread by		Date						Frequency		50Hz			
Mark		Before modification		Modified by		Modify date		20160709							
1		2		3		4		5		6		7		8	
								SHINI				信易電熱機械股份有限公司		Shini Plastics Technologies, Inc.	

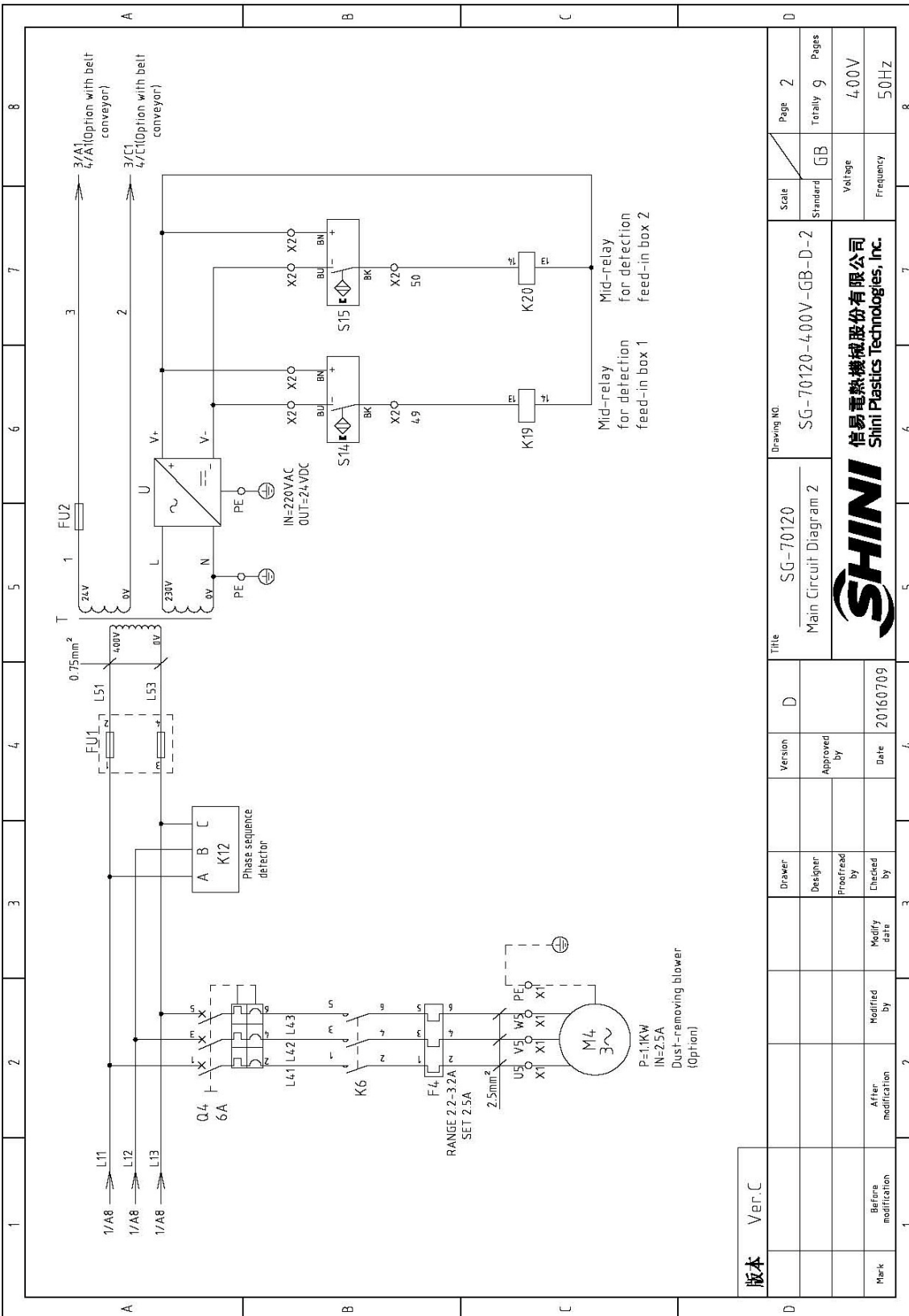
1		2		3		4		5		6		7		8	
NO.	Symbol	Name	Manufacturer	Type	Specification	Number	Material number	Remark							
51			--	TB2.5 PE I	--	1	YE61253500000	(3)							
52			--	TB2.5B I	32A	2	YE6125004-0000	(2)							
53	X2 X3	Terminal board	PHOENIX	TB2.5B I	32A	24	YE6125004-0000								
54			PHOENIX	TB2.5 PE I	--	1	YE61253500000								
55	X4	Terminal board	--	TB2.5B I	32A	4	YE6125004-0000	(4)							
56			--	NCT-70PE	--	1	YE61070000000								
57	Y11 Y12 Y13 Y14	Solenoid valve	----	----	24VAC 50/60Hz	4	----	(1)							
58	X5	Metal tie in	SHINI	PLT-162-RR1(A)	2P	1	YE68016200100	(1)(2)							
59	H3	Buzzer	TEND	EA-2	24VAC	1	YE84240200000	(1)(4)							
60	MS	Material level switch	SIPAI	SR-80	24VAC	1	YE15802400100	(1)(4)							
61	X10	Metal tie in	APEX	PLT-254-PM	4P	1	YE68025400000	(1)(4)							
62			APEX	PLT-254-RF	4P	1	YE68025400100	(1)(4)							
63	M1	Motor	--	75KW	400V 50Hz	1	----	(1)							
64	M2	Oil pump motor	--	15KW	400V 50Hz	1	----	(1)							
65	M3	Blower	--	7.5KW	400V 50Hz	1	----	(1)							
66	M4	Blower	--	1.1KW	400V 50Hz	1	----	(1)(3)							
A															
B															
C															
D															
版本		Ver.B													
Mark		Before modification	Modified by	Modify date	Checked by	Checked date	Proofread by	Designer	Version	Title		Drawing NO.		Scale	Page
									D	SG-7090		SG-7090-400V-GB-D-9		Standard	9
							Approved by			Electrical Components List 3				GB	9
							Date			SHINI		Voltage		400V	
							20160709			信易電熱機械股份有限公司		Frequency		50Hz	
										Shini Plastics Technologies, Inc.					
1		2		3		4		5		6		7		8	




Ver.C

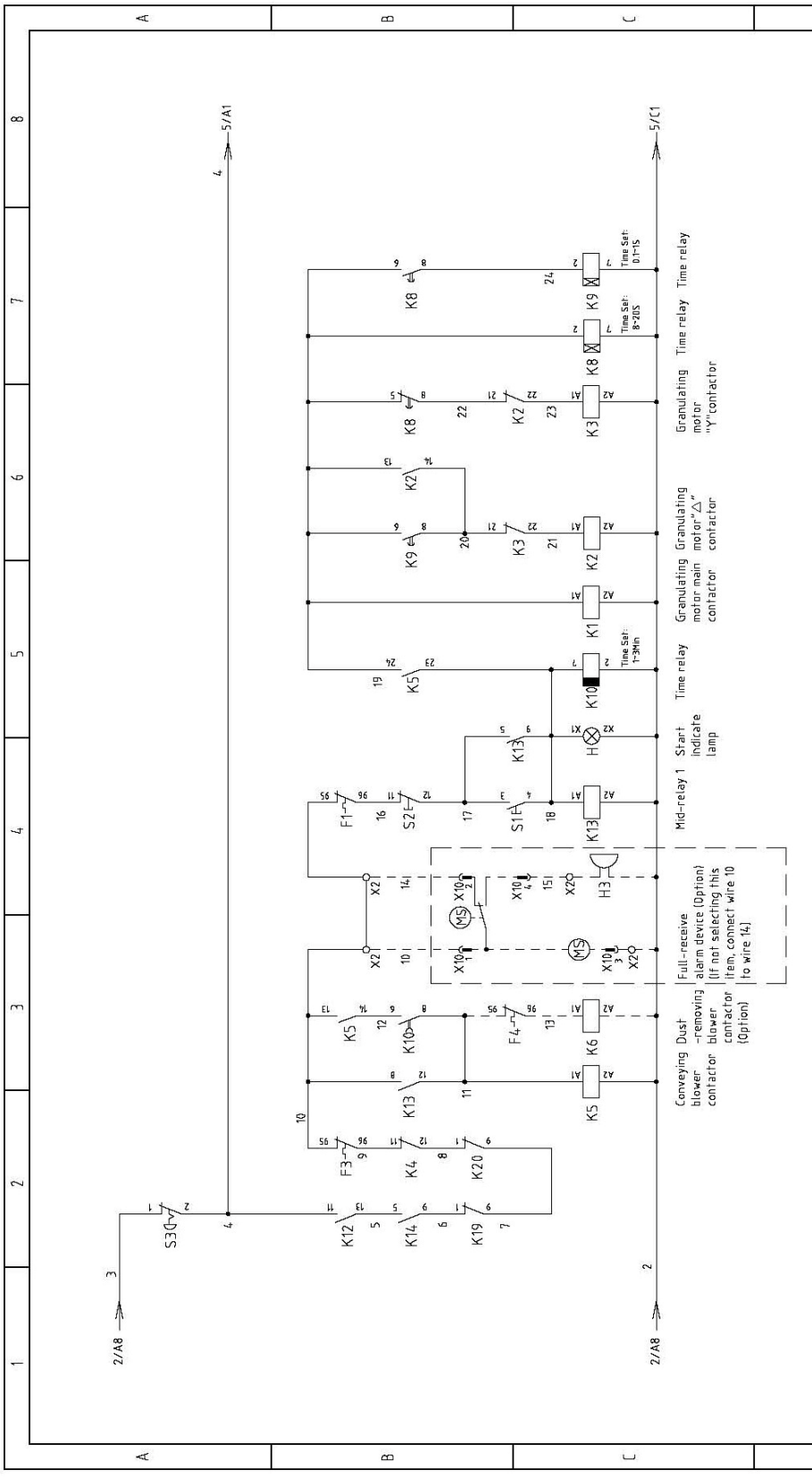
Drawing No.		SG-70120-400V-GB-D-1		Page 1	
Title		Main Circuit Diagram 1		Standard GB	
Version		D		Totaly 9 Pages	
Designer		Approved by		Voltage 400V	
Proofread by		Date 20160709		Frequency 50HZ	
Checked by		Modified by			
Modified date		After modification			
Mark modification		Barina modification			





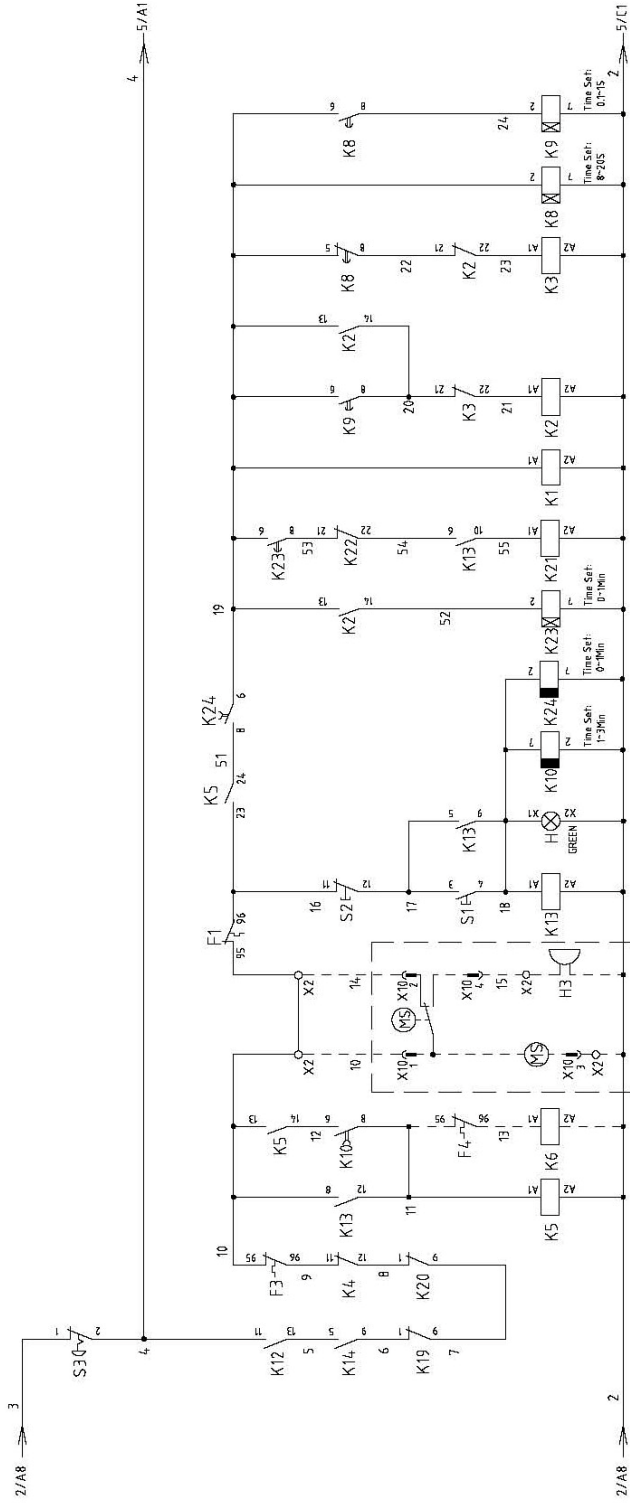
版本	Ver.C
Mark	
Before modification	
After modification	
Modified by	
Modify date	
Checked by	
Proofread by	
Designer	
Drawer	
Version	D
Approved by	
Date	20160709

SG-70120	SG-70120-4.00V-GB-D-2	Scale	Page 2
Main Circuit Diagram 2		Standard	Totally 9
		Voltage	4.00V
		Frequency	50Hz
 信易電熱機械股份有限公司 Shini Plastics Technologies, Inc.			8



版本 Ver.C		Title SG-70120		Drawing NO. SG-70120-4.00V-GB-D-3		Scale	Page 3
		Control Circuit Diagram 1				Standard	Totally 10 Pages
						Voltage 400V	
						Frequency 50Hz	
Mark	Before modification	After modification	Modified by	Date	20160709		
			Checked by				
			Proofread by				
			Designer	Approved by			
			Drawer	Version	D		
Note: When operation without optional belt conveyor.							





Conveying Dust blower -removing blower contactor (Option)

Full-recvie alarm device (Option) (if not selecting this item, connect wire 10 to wire 14)

Mid-relay 1 Start indicate lamp GREEN

Time relay 1:30min

Time relay 0:1min

Time relay 0:1min

Belt conveyor Middle relay (Option)

Belt conveyor start relay (Option)

Granulating motor main contactor

Granulating motor "Δ" relay contactor

Granulating motor "Y" contactor

Time relay Time relay

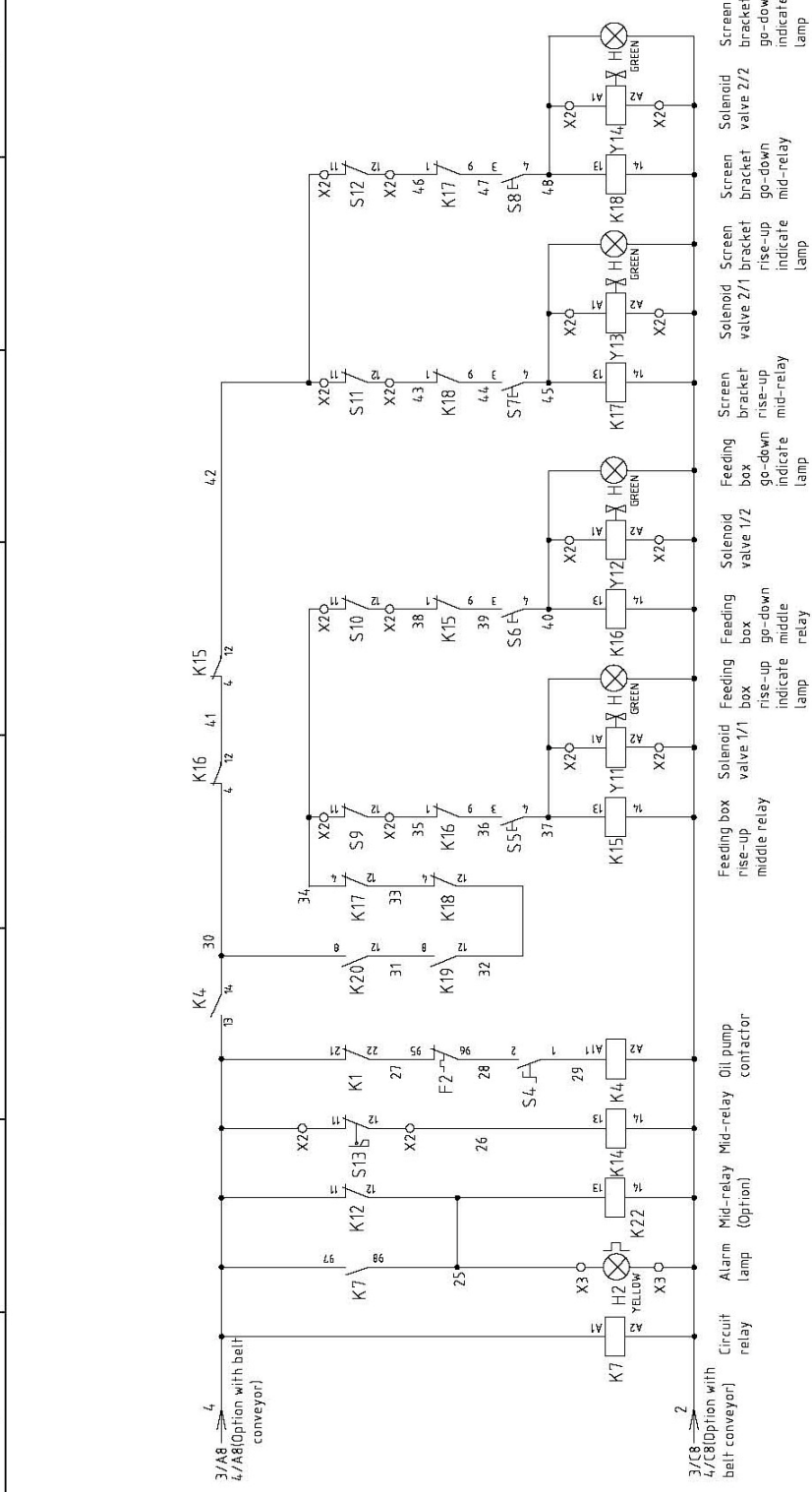
Time Set: 0:15

Time Set: 0:20S

版本 Ver.C

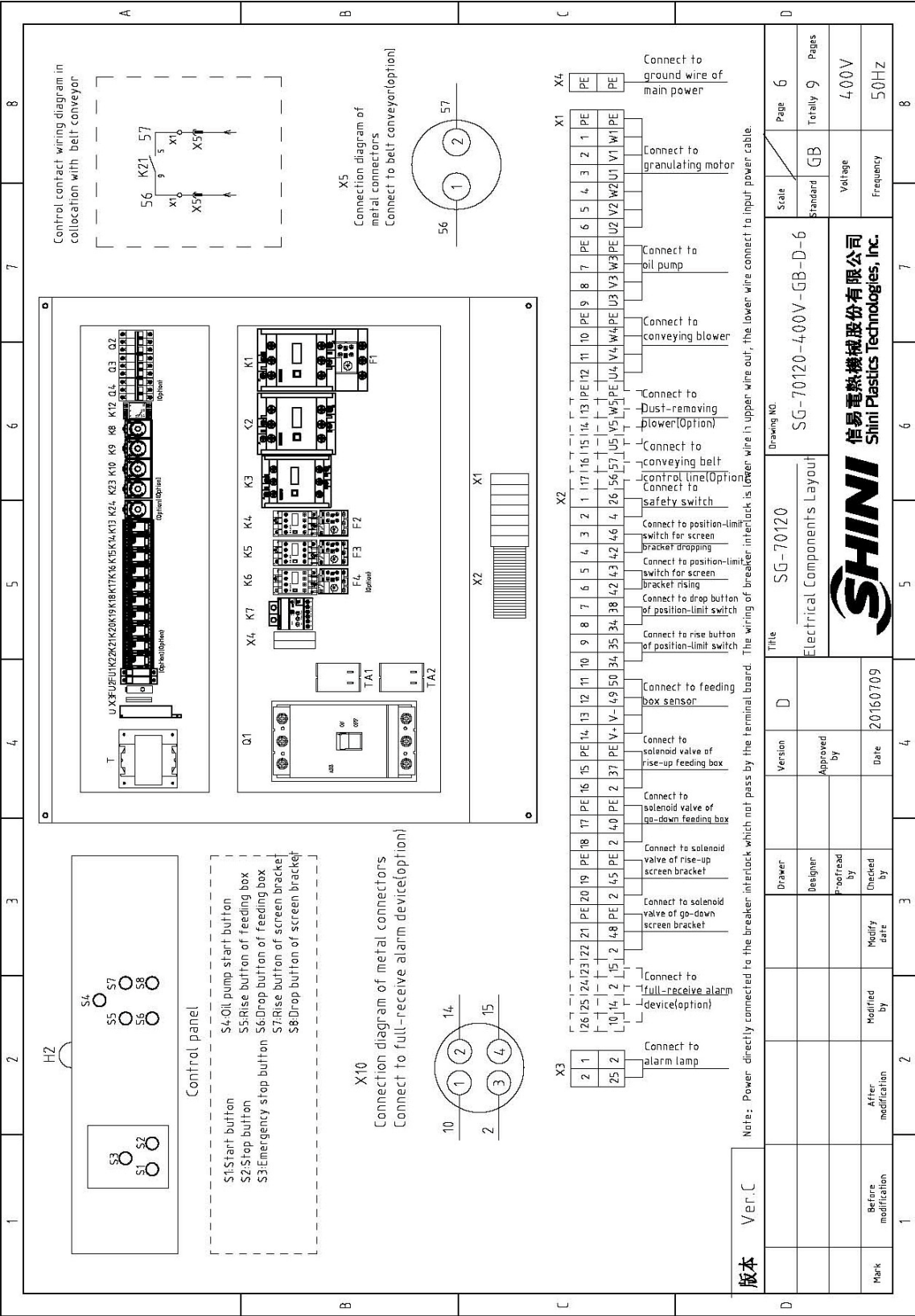
Note: When operation with optional belt conveyor.

Mark	Before modification	After modification	Modified by	Modify date	Checked by	Date	20160709
Designer	Proofread by	Approved by	Version	D	Drawer		
Title		SG-70120		Control Circuit Diagram 2		Drawing NO.	
Scale		Standard		GB		Page 4	
Voltage		400V		Totally 9		Pages	
Frequency		50Hz		8			
Title		SG-70120-400V-GB-D-4		Drawing NO.			
SHINI		信易電熱機械股份有限公司		Shini Plastics Technologies, Inc.			

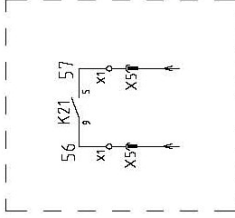


版本 Ver.C

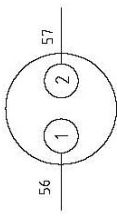
Drawing No.		Scale	Page
SG-70120-400V-GB-D-5		GB	5
Control Circuit Diagram 3		Standard	Totally 9 Pages
Shini 倍易电热机械股份有限公司 Shini Plastics Technologies, Inc.		Voltage	400V
		Frequency	50HZ
Drawn	Version	Title	Drawing No.
Designer	Approved by	Control Circuit Diagram 3	SG-70120-400V-GB-D-5
Prepared by	Date	20160709	
Checked by	Modify date		
Modified by	Modified by		
After modification	After modification		
Before modification	Before modification		



Control contact wiring diagram in collocation with belt conveyor



X5
Connection diagram of metal connectors
Connect to belt conveyor(option)



X6
Connect to ground wire of main power

X7
Connect to granulating motor

X8
Connect to oil pump

X9
Connect to conveying blower

X10
Connect to dust-removing blower(option)

X11
Connect to conveying belt control line(option)

X12
Connect to safety switch

X13
Connect to position-limit switch for screen bracket dropping

X14
Connect to position-limit switch for screen bracket rising

X15
Connect to drop button of position-limit switch

X16
Connect to rise button of position-limit switch

X17
Connect to feeding box sensor

X18
Connect to solenoid valve of rise-up feeding box

X19
Connect to solenoid valve of go-down feeding box

X20
Connect to solenoid valve of rise-up screen bracket

X21
Connect to solenoid valve of go-down screen bracket

X22
Connect to full-receive alarm device(option)

X23
Connect to alarm lamp

Note: Power directly connected to the breaker interlock which not pass by the terminal board. The wiring of breaker interlock is lower wire in upper wire out, the lower wire connect to input power cable.

版本 Ver.C

Page 6	Scale	Standard	Totally 9	Pages
		GB		4,00V
				50Hz
Drawing No.		SG-70120-400V-GB-D-6		
Title		Electrical Components Layout		
Version	Designer	Checked by	Modify date	Date
D				20160709
Approved by				
Before modification	After modification	Modified by	Modify date	

SHINI
信易電熱機械股份有限公司
Shini Plastics Technologies, Inc.

1		2		3		4		5		6		7		8	
NO.	Symbol	Name	Manufacturer	Type	Specification	Number	Material number	Remark							
1	Q1	Gate-circuit breaker	ABB	A3N4-00TMF320/32003PFF	320A	1	YE415034.00000								
2	Q2	Circuit breaker	TECO	BM-63C/3P	10A	1	YE40301003000								
3	Q3	Circuit breaker	TECO	BM-63C/3P	40A	1	YE40304003000								
4	Q4	Circuit breaker	TECO	BM-63C/3P	6A	1	YE40306003000	(3)							
5	K1,K2	Contactor	SIEMENS	3RT5054-1AB36	24VAC 50/60Hz	2	YE005054.00900								
6	K3	Contactor	SIEMENS	3RT5046-1AC20	24V 50/60Hz	1	YE005046.02600								
7	K4	Contactor	SIEMENS	3RT6015-1AB02	24V 50/60Hz	1	YE006015.02600								
8		Assistant point	SIEMENS	3RH6911-1AA10	1NO	2	YE006911.00000								
9	K5	Contactor	SIEMENS	3RT6025-1AC20	24V 50/60Hz	1	YE006025.02600								
10		Assistant point	SIEMENS	3RH6911-1AA10	1NO	1	YE006911.00000								
11	K6	Contactor	SIEMENS	3RT6015-1AB02	24V 50/60Hz	1	YE006015.02600	(3)							
12	K7	Circuit relay	SCHNEIDER	LT4706BA	0.5-6A (24VAC/DC)	1	YE0404.7601200								
13	K8	Timer relay	YUYUN	TH3A-NAB	24VAC/DC 0-60S	1	YE866024.00300								
14	K9	Timer relay	YUYUN	TH3M-NAB	24VAC/DC 0-3S/60Min	1	YE86123000000								
15	K10	Timer relay	YUYUN	TRF-N	24VAC/DC 0-3Min	1	YE860324.00000								
16	K12	Phase sequence protector	CHAOSHI	ABJ-10W	400V 50/60Hz	1	YE03103800000								
17	K13	Middle relay	Honeywell	GR-2C-AC24V	24VAC	1	YE030224.00300								
18	K13	Middle relay	Honeywell	GR-4C-AC24V	24VAC	1	YE0304.24.00300	(2)							
19	K14~K18	Middle relay	Honeywell	GR-2C-AC24V	24VAC	5	YE030224.00300								
20	K19,K20	Middle relay	WEDMULLER	DRM270024LT	24VDC	2	YE032724.00000	(2)							
21	K21,K22	Middle relay	Honeywell	GR-2C-AC24V	24VAC	2	YE030224.00300	(2)							
22	K23	Timer relay	YUYUN	TH3A-NAB	24VAC/DC 0-60S	1	YE866024.00300	(2)							
23	K24	Timer relay	YUYUN	TRF-N	24VAC/DC 0-3Min	1	YE860324.00000	(2)							
24	F1	Overload relay	SIEMENS	3RU5146-4MB0	80-100A	1	YE01514.6800000								
25	F2	Overload relay	SIEMENS	3RU6116-1EB0	2.8-4A	1	YE01160280000								
版本		Ver.C		Notes: (1)Means it's not the material inside the control box.(2) Stand for conveying belt optional accessories.											
				Drawer	Version	Title		Drawing NO		Scale		Page		7	
				Designer	Approved by	SG-70120		SG-70120-400V-GB-D-7		Standard		GB		Totally 9	
				Proofread by	Date	Electrical Components List 1				Voltage		4.00V			
				Checked by	20160709					Frequency		50Hz			
Mark		Before modification		After modification		Modify date									
1	2	3	4	5	6	7	8								

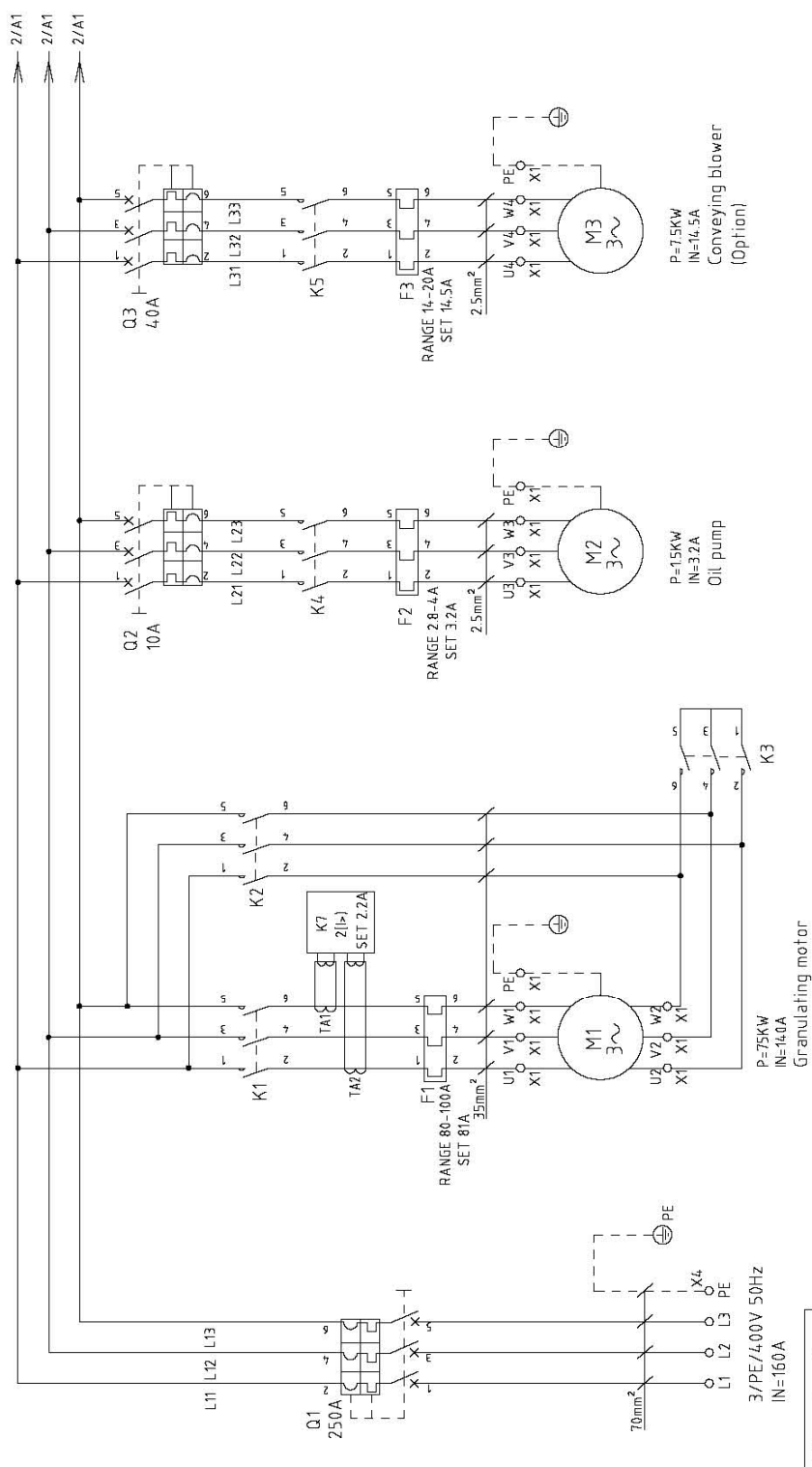



1		2		3		4		5		6		7		8	
NO.	Symbol	Name	Manufacturer	Type	Specification	Number	Material number	Remark							
26	F3	Overload relay	SIEMENS	3RU6126-4BB0	14-20A	1	YE0126014.0000								
27	F4	Overload relay	SIEMENS	3RU6116-1DB0	2.2-3.2A	1	YE01160220000	(3)							
28	FU1	Fuse	CHINT	RT28-32	2P	1	YE41032200000								
29		Fuse core	MRO	10x38 500V	2A	2	YE4602000100								
30	FU2	Fuse	YINDA	FS-10	----	1	YE410010000000								
31		Fuse core	----	6x30	10A	1	YE4663104.0000								
32	TA1,TA2	Current mutual inductance	RAT10	RCT-35	150/5A	2	YE04150500000								
33	T	Transformer	BAIYUN	IN=400V OUT=24V/ 230V	24V 350VA / 230V 350mA	1	YE7004.0005800								
34	H2	Alarm lamp	SHINI	LED-3051	24VAC	1	YE83305100900	(1)							
35	U	DC power	MEANWELL	EPR-35-24.15A	IN100-240V OUT24V	1	YE71352400100								
36	S1, S5-S8(H)	Start button	SCHNEIDER	XB2BW33MIC	4.00VAC	5	YE11233100000								
37	S2	Stop button	SCHNEIDER	XB2BA22C	4.00VAC	1	YE11222000000								
38	S3	Emergency stop button	SCHNEIDER	XB2BS42C	4.00VAC	1	YE11254200000								
39	S4	Selector switches	ABB	C2SS2-10B-10	UI=300V Ith=5A	1	YE12210100000								
40	S9,S10,S11,S12	Position limit switch	SCHMERSAL	TS236-11Z-M20	500V	4	YE10361200000	(1)							
41	S13	Safety switch	SCHMERSAL	AZ17-11ZK	AZ-17	1	YE16171100000	(1)							
42	S14,S15	Sensor	DELIN	DL-12	24VDC	2	YE15122400000	(1)							
43	X1	Terminal board	PHOENIX	SAK-35	--	6	YE6135004.0000								
44			PHOENIX	TB35 PE I	--	1	YE61353500000								
45			--	TB25B I	32A	5	YE6125004.0000								
46			--	TB2.5 PE I	--	2	YE61253500000								
47			--	TB25B I	32A	3	YE6125004.0000	(3)							
48			--	TB2.5 PE I	--	1	YE61253500000	(3)							
49			--	TB25B I	32A	2	YE6125004.0000	(2)							
50	X2 X3	Terminal board	PHOENIX	TB25B I	32A	24	YE6125004.0000								
版本 Ver. C															
(3)Means optional accessories of dedusting blower; (4) Means optional accessories of full-receive alarm device.															
		Drawer		Version		Title		Drawing No.		Scale		Page		8	
		Designer		Approved by		SG-70120		SG-70120-400V-GB-D-8		Standard		GB		Totally 9	
		Proofread by		Date		Electrical Components List 2				Voltage		4.00V			
		Modified by		20160709						Frequency		50Hz			
Mark		Before modification		Modify date											
1		2		3		4		5		6		7		8	

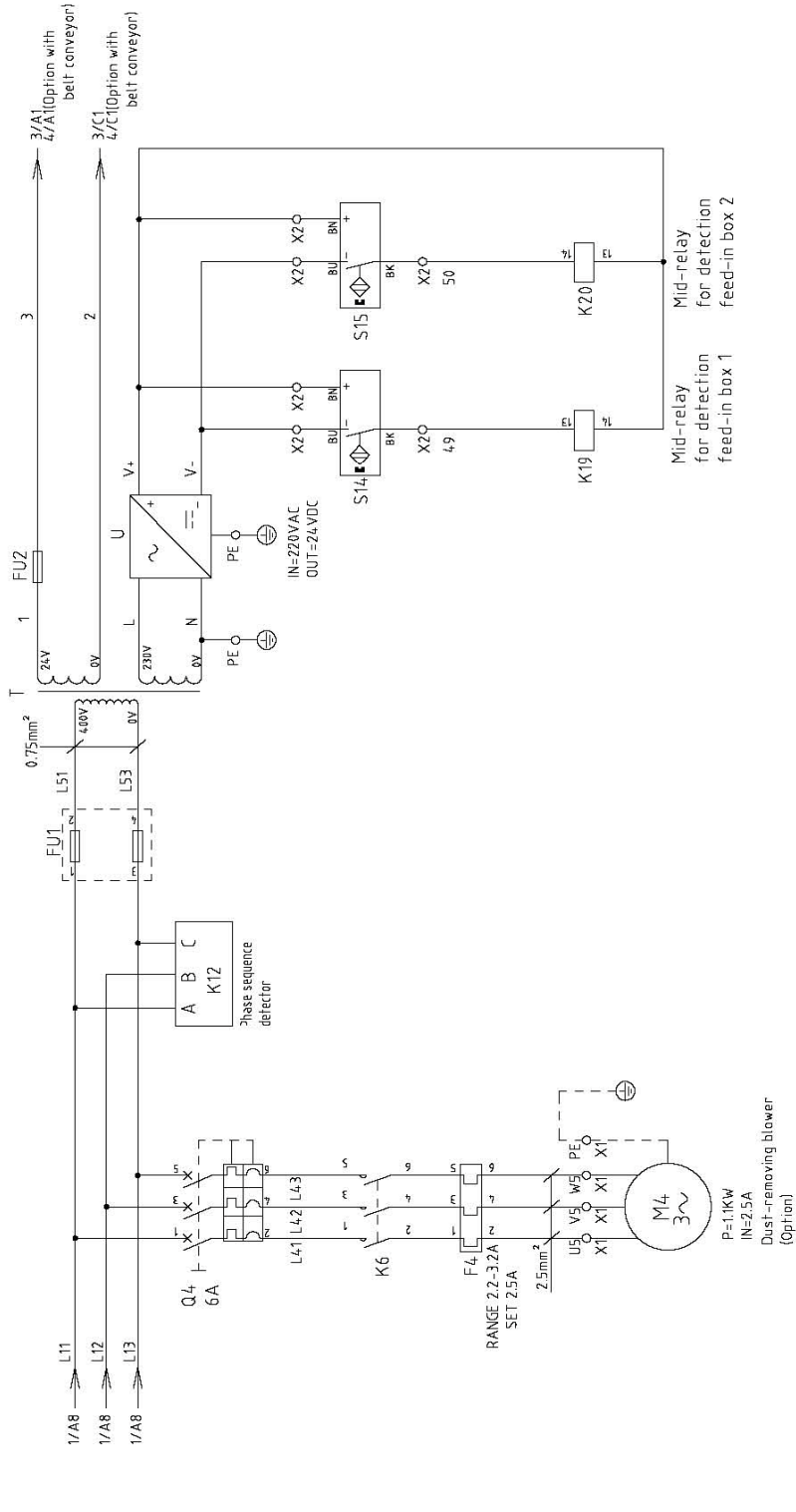


1		2		3		4		5		6		7		8	
NO.	Symbol	Name	Manufacturer	Type	Specification	Number	Material number	Remark							
51			PHOENIX	TB2.5 PE I	--	1	YE67253500080								
52			--	TB2.5B I	32A	4	YE6725004-0000	(4)							
53	X4	Terminal board	--	NCT-70PE	--	1	YE61070000000								
54	Y11 Y12 Y13 Y14	Solenoid valve	----	----	24VAC 50/60Hz	4	----	(1)							
55	X5	Metal tie in	SHINI	PLT-162-RR(※)	2P	1	YE68016200100	(1)(2)							
56	H3	Buzzer	TEND	EA-2	24VAC	1	YE84240200000	(1)(4)							
57	MS	Material level switch	SIPAI	SR-80	24VAC	1	YE15802400100	(1)(4)							
58	X10	Metal tie in	APEX	PLT-254-PM	4P	1	YE68025400000	(1)(4)							
59			APEX	PLT-254-RF	4P	1	YE68025400100	(1)(4)							
60	M1	Motor	--	90KW	400V 50Hz	1	----	(1)							
61	M2	Oil pump motor	--	15KW	400V 50Hz	1	----	(1)							
62	M3	Blower	--	7.5KW	400V 50Hz	1	----	(1)							
63	M4	Blower	--	1.1KW	400V 50Hz	1	----	(1)(3)							
版本 Ver.C															
D		D		D		D		D		D		D		D	
Mark		Before modification		After modification		Modified by		Modify date		Checked by		Date		20160709	
				Designer		Approved by		Version		Title		Drawing NO.		Scale	
								D		SG-70120		SG-70120-400V-GB-D-9		Standard	
										Electrical Components List 3				GB	
														Valtage	
														400V	
														Frequency	
														50Hz	
														Page 9	
														Totally 9 Pages	
														8	



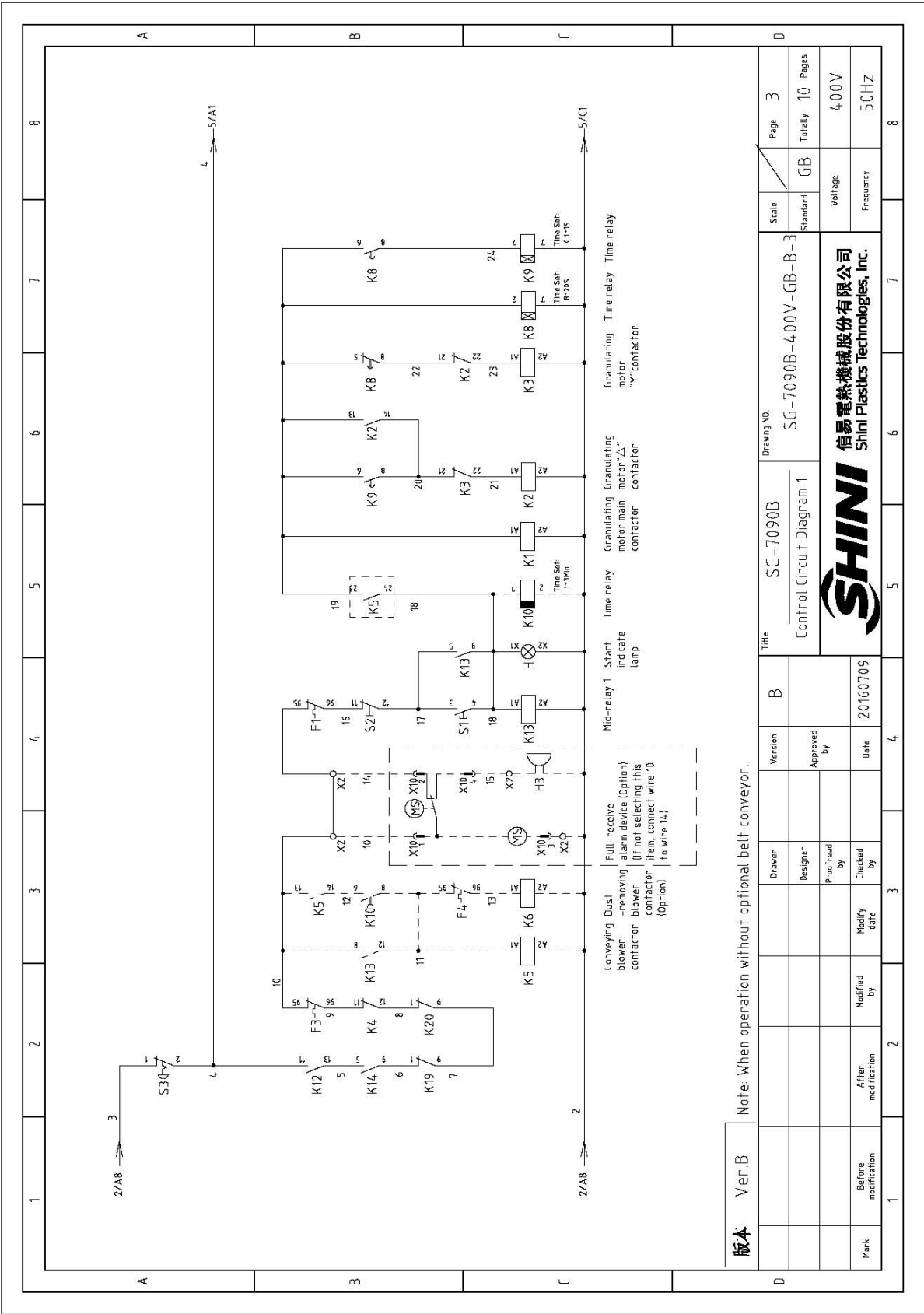


版本 Ver.B		Drawing NO. SG-7090B-400V-GB-B-1		Page 1	
Title SG-7090B Main Circuit Diagram 1		Standard GB		Totality 9 Pages	
 信易電熱機械股份有限公司 Shini Plastics Technologies, Inc.		Voltage 400V		Frequency 50HZ	
Mark	Before modification	After modification	Modified by	Modify date	Checked by
Designer	Proofread by	Approved by	Date 20160709	Version	B



版本 Ver.B		Drawing NO.		Scale		Page 2	
		Title		Standard		Totally 9	
		SG-7090B		SG-7090B-400V-GB-B-2		400V	
		Main Circuit Diagram 2		GB		50HZ	
		Version		Date			
		Approved by		20160709			
		Checked by					
		Modify date					
		After modification					
		Modified by					
		Before modification					
		Date					
		Checked by					
		Approved by					
		Designer					
		Drawer					

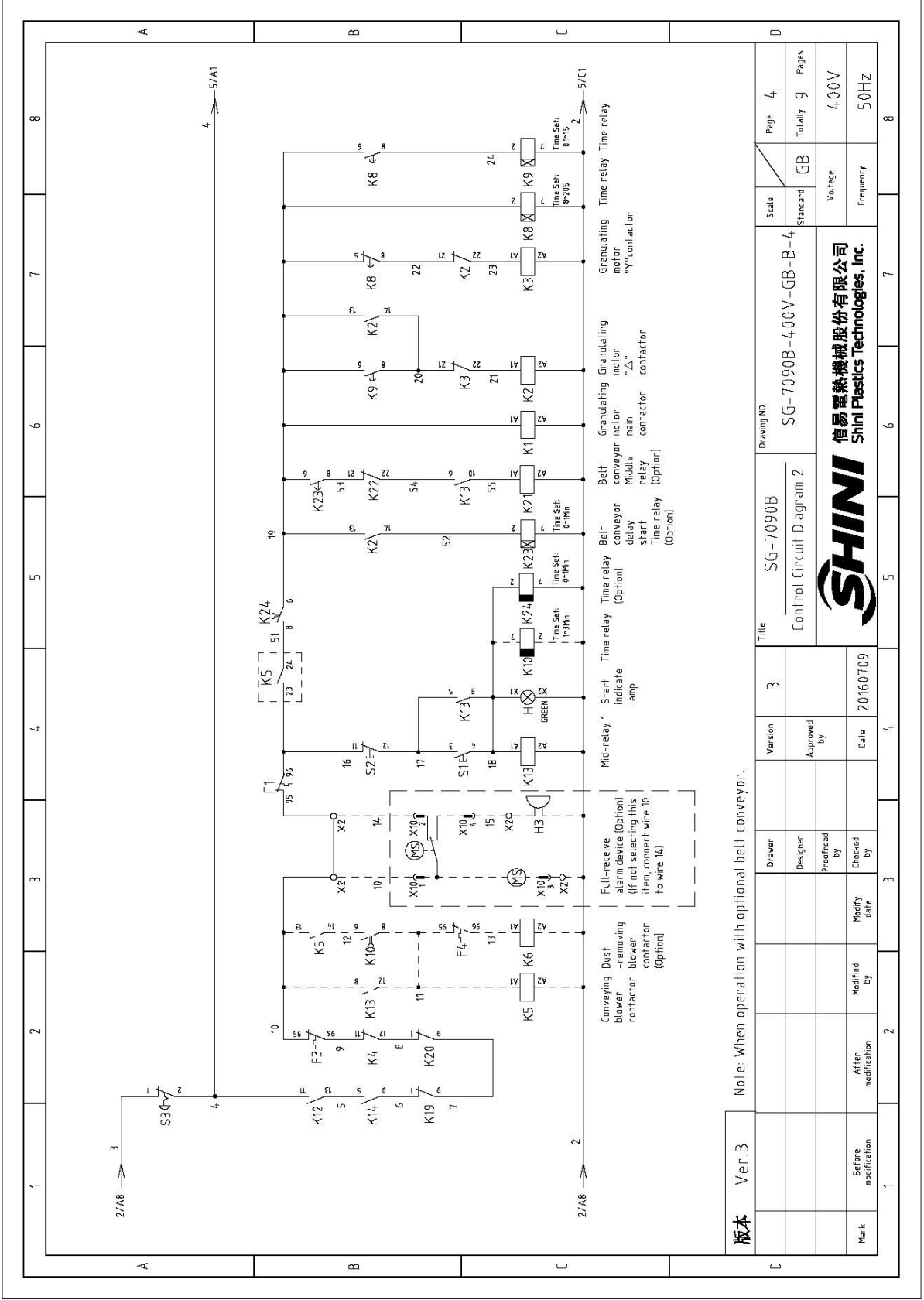





版本 Ver.B

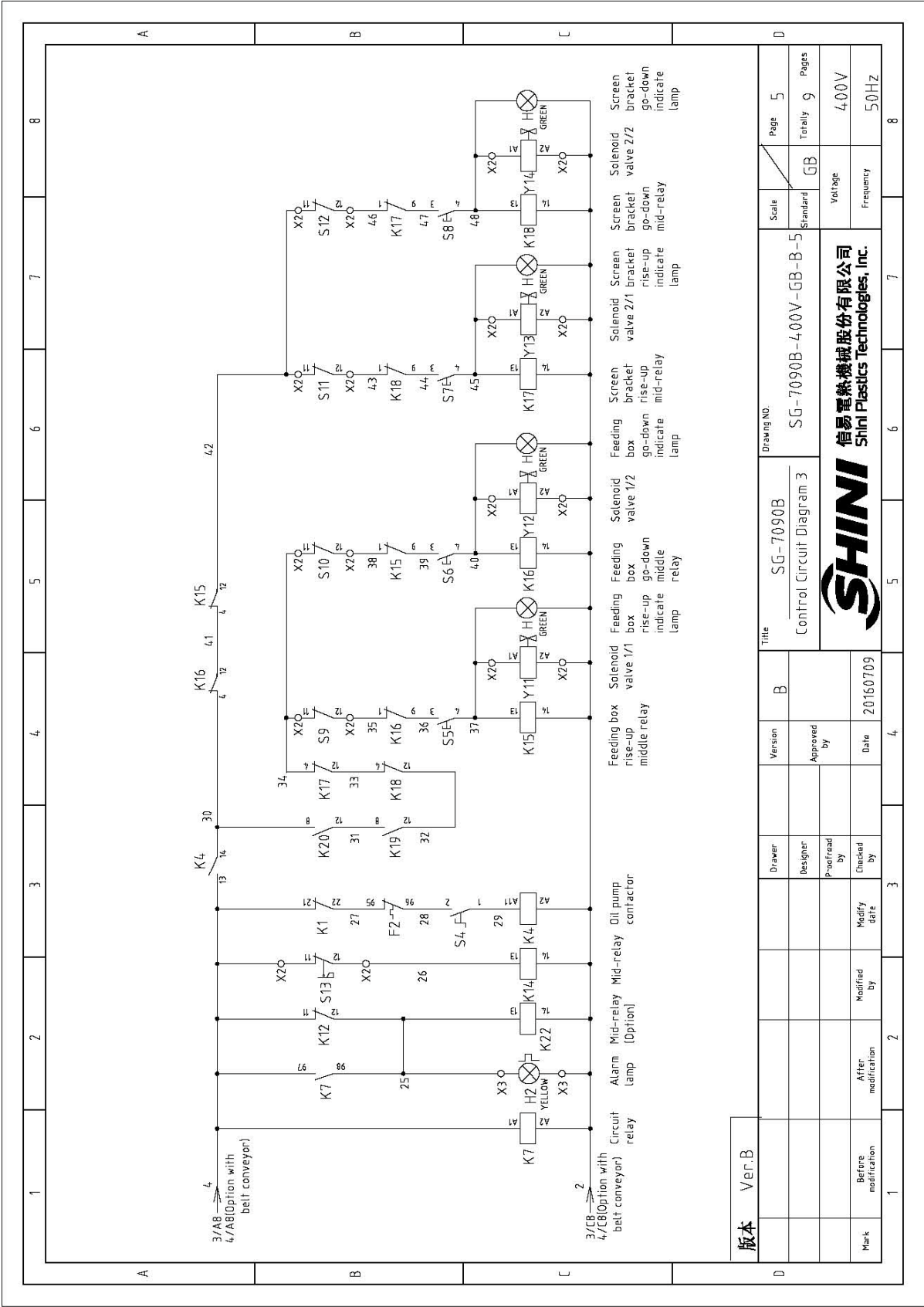
Note: When operation without optional belt conveyor.

Mark	Before modification	After modification	Modified By	Modify date	Checked By	Date	20160709	SHINI 信易電熱機械股份有限公司 Shini Plastics Technologies, Inc.	SG-7090B-4.00V-GB-B-3 Control Circuit Diagram 1	Drawing No.	Scale	Page	Totally	Pages
						4						GB		



版本 Ver.B Note: When operation with optional belt conveyor.

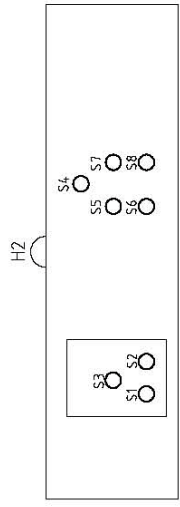
Version	B	Approved by		Date	20160709
Designer		Checked by		Modify date	
Drawn		After modification		Modified by	
Draw		Before modification		Modify date	
Title	SG-7090B Control Circuit Diagram 2				
Version	SG-7090B				
Scale	Standard				
Pages	Totally 9				
Page	4				
Standard	GB				
Frequency	50Hz				
Voltage	400V				
 信易電熱機械股份有限公司 Shini Plastics Technologies, Inc.					
Drawing NO.			SG-7090B-400V-GB-B-4		



版本 Ver.B

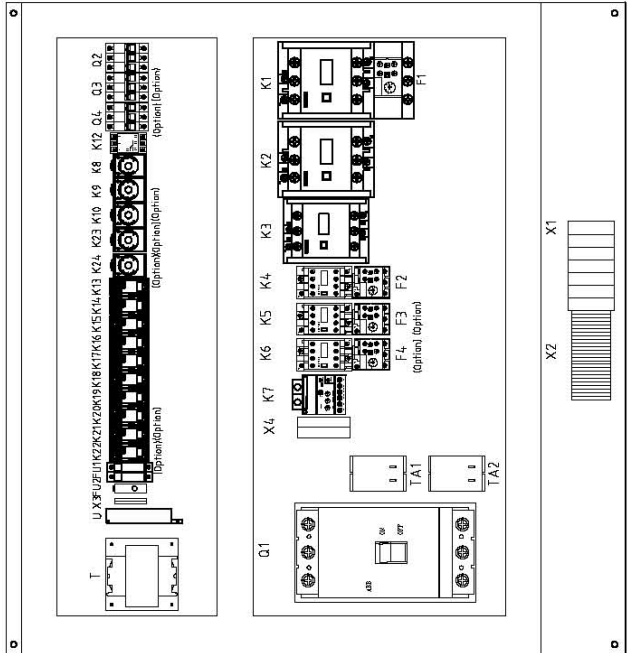
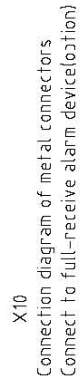
Mark	Before modification	Modified by	Modify date	Designer	Version	Title	Drawing No.	Scale	Page
					B	SG-7090B Control Circuit Diagram 3	SG-7090B-4,00V-GB-B-5	Standard	5
After modification				Approved by					Totally 9
				Date					4,00V
									50Hz
									GB
									8



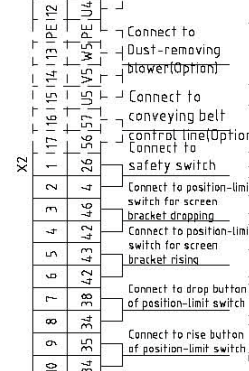
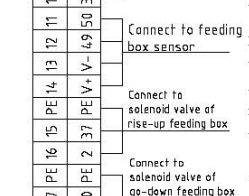
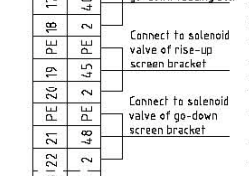
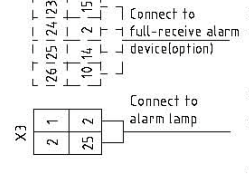
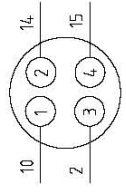
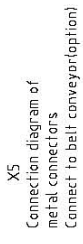
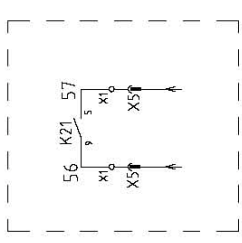


Control panel

S1: Start button
 S2: Stop button
 S3: Emergency stop button
 S4: Oil pump start button
 S5: Rise button of feeding box
 S6: Drop button of feeding box
 S7: Rise button of screen bracket
 S8: Drop button of screen bracket



Control contract wiring diagram in collocation with belt conveyor



版本 Ver.B

Note: Power directly connected to the breaker interlock which not pass by the terminal board. The wiring of breaker interlock is lower wire in upper wire out, the lower wire connect to input power cable.

Mark	Before modification	After modification	Modified by	Modify date	Checked by	Date	20160709
Designer							
Version	B		Approved by				
Title	SG-7090B Electrical Components Layout						
Scale	Standard	GB	Voltage		Frequency		Page
			400V		50Hz		6
			Totally		Page		8
			9		Page		8

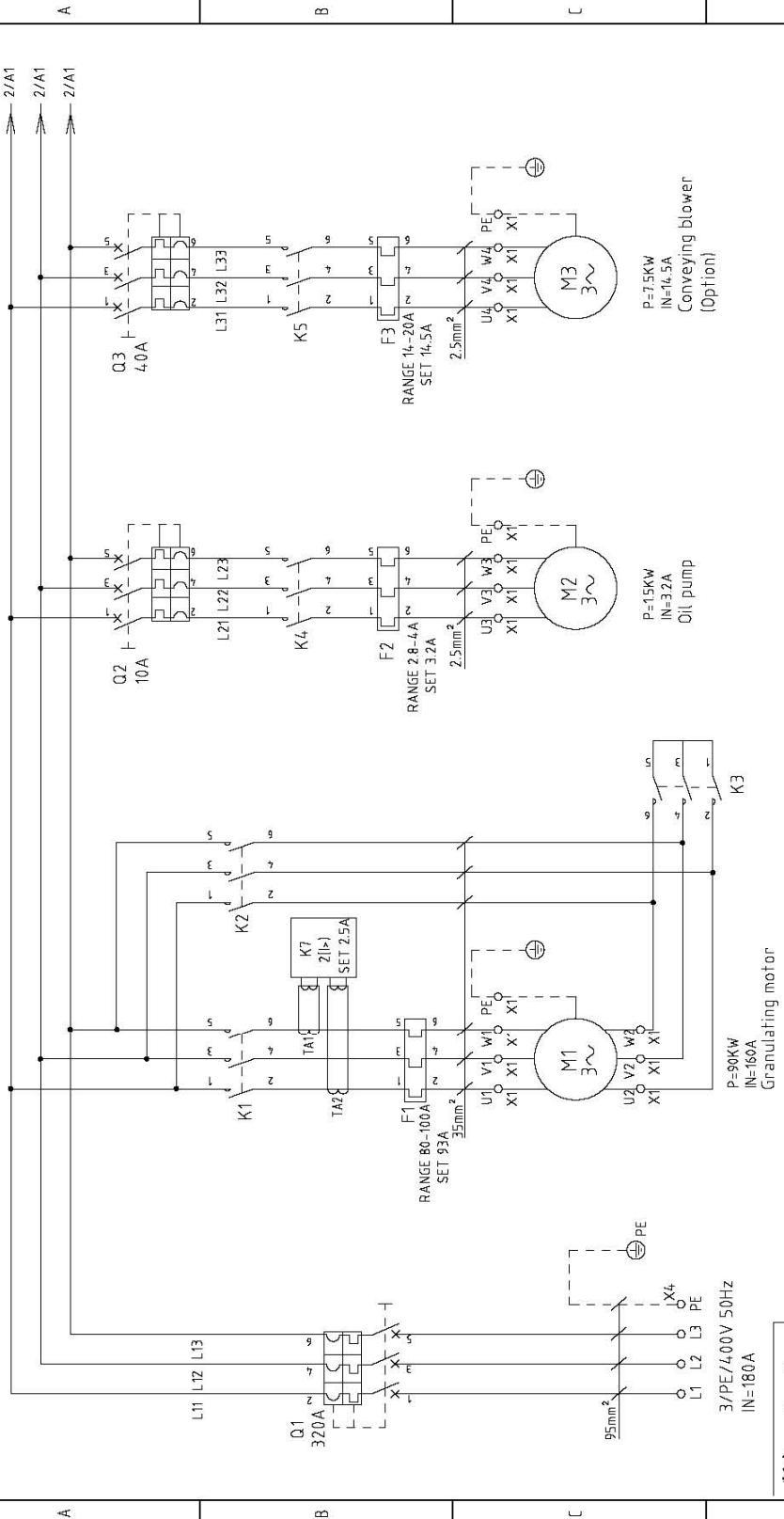


1		2		3		4		5		6		7		8																			
NO.	Symbol	Name	Manufacturer	Type	Specification	Number	Material number	Remark																									
1	Q1	Gate-circuit breaker	ABB	AZB250TMF250/25003PFF	250A	1	YE41252800000																										
2	Q2	Circuit breaker	TECO	BM-63C/3P	10A	1	YE40301003000																										
3	Q3	Circuit breaker	TECO	BM-63C/3P	40A	1	YE40304003000	(2)																									
4	Q4	Circuit breaker	TECO	BM-63C/3P	6A	1	YE40300603000	(3)																									
5	K1,K2	Contact	SIEMENS	3RT5046-1AC20	24V 50/60Hz	2	YE00504602600																										
6		Assistant point	SIEMENS	3RH5921-1CA01	1NC	3	YE00592110100																										
7		Assistant point	SIEMENS	3RH5921-1CA10	1NO	1	YE00592110000																										
8		Assistant point	SIEMENS	3RH5921-1CA10	1NO	1	YE00592110000	(5)																									
9	K3	Contact	SIEMENS	3RT5045-1AC20	24V 50/60Hz	1	YE00504502600																										
10	K4	Contact	SIEMENS	3RT6015-1AB02	24V 50/60Hz	1	YE00601502600																										
11		Assistant point	SIEMENS	3RH6911-1AA10	1NO	2	YE00691110000																										
12	K5	Contact	SIEMENS	3RT6025-1AC20	24V 50/60Hz	1	YE00602502600	(2)																									
13		Assistant point	SIEMENS	3RH6911-1AA10	1NO	1	YE00691110000	(2)																									
14	K6	Contact	SIEMENS	3RT6015-1AB02	24V 50/60Hz	1	YE00601502600	(3)																									
15	K7	Circuit relay	SCHNEIDER	LT47068A	0.5-6A (24VAC/DC)	1	YE04047601200																										
16	K8	Timer relay	YUYUN	TH3A-NAB	24VAC/DC 0-60S	1	YE86602400300																										
17	K9	Timer relay	YUYUN	TH3M-NAB	24VAC/DC 0-3S/60Min	1	YE86123000000																										
18	K10	Timer relay	YUYUN	TRF-N	24VAC/DC 0-3Min	1	YE86032400000	(2)																									
19	K12	Phase sequence protector	CHAOSHI	ABJ-10W	400V 50/60Hz	1	YE03103800000																										
20	K13	Middle relay	Honeywell	GR-2C-AC24V	24VAC	1	YE03022400300																										
21	K13	Middle relay	Honeywell	GR-4C-AC24V	24VAC	1	YE03042400300	(5)																									
22	K14-K18	Middle relay	Honeywell	GR-2C-AC24V	24VAC	5	YE03022400300																										
23	K19,K20	Middle relay	WEIDMULLER	DRM27002ALT	24VDC	2	YE03272400000																										
24	K21,K22	Middle relay	Honeywell	GR-2C-AC24V	24VAC	2	YE03022400300	(5)																									
25	K23	Timer relay	YUYUN	TH3A-NAB	24VAC/DC 0-60S	1	YE86602400300	(5)																									
版本		Ver.B Notes: (1)Means it's not the material inside the control box.(2) Stand for conveying belt optional accessories.																															
D		Title		Drawing NO.		Scale		Page		7		Standard		GB		Voltage		400V		Pages		Totally		9		Frequency		50HZ					
Mark		Before modification		After modification		Modified by		Modify date		Checked by		Proofread by		Designer		Approved by		Version		B		Electrical Components List 1		SG-7090B		SG-7090B-400V-GB-B-7		SHINI		信易電熱機械股份有限公司		Shini Plastics Technologies, Inc.	
1		2		3		4		5		6		7		8		9		10		11		12		13		14		15		16			

1		2		3		4		5		6		7		8	
NO.	Symbol	Name	Manufacturer	Type	Specification	Number	Material number	Remark							
26	KZ4	Timer relay	YUYUN	TRF-N	24VAC/DC 0-3Min	1	YE8603Z400000	(5)							
27	F1	Overload relay	SIEMENS	3RU5146-4MB0	80-100A	1	YE01514680000								
28	F2	Overload relay	SIEMENS	3RU6116-1EB0	2.8-4A	1	YE01160280000	(2)							
29	F3	Overload relay	SIEMENS	3RU6126-4BB0	14-20A	1	YE01260140000	(3)							
30	F4	Overload relay	SIEMENS	3RU6116-1DB0	2.2-3.2A	1	YE01160220000								
31	FU1	Fuse	CHNT	RT28-32	2P	1	YE41032200000								
32		Fuse core	MRO	10x38 500V	2A	2	YE46002000100								
33	FU2	Fuse	YINDA	FS-10	----	1	YE41001000000								
34		Fuse core	----	6x30	10A	1	YE46631040000								
35	TA1,TA2	Current mutual inductance	RATIO	RCT-35	150/5A	2	YED4150500000								
36	T	Trans farmer	BALIYUN	IN=400V OUT=24V / 230V	24V 350VA / 230V 350mA	1	YE7004.0005800								
37	H2	Alarm lamp	SHINI	LED-3051	24VAC	1	YE83305100900	(1)							
38	U	DC power	MEANWELL	EPR-35-24 1.5A	IN100-24.0V OUT24V	1	YE71352400100								
39	S1,S5-S8(H)	Start button	SCHNEIDER	XB2BW33M1C	400VAC	5	YE11233100000								
40	S2	Stop button	SCHNEIDER	XB2BA22C	400VAC	1	YE11222000000								
41	S3	Emergency stop button	SCHNEIDER	XB2BS542C	400VAC	1	YE11254.200000								
42	S4	Selector switches	ABB	CZSS2-10B-10	Ui=300V Ith=5A	1	YE12210100000								
43	S9,S10,S11,S12	Limit switch	SCHMERSAL	TS236-11Z-M70	500V	4	YE10361200000	(1)							
44	S13	Safety switch	SCHMERSAL	AZ17-11ZK	AZ-17	1	YE16171100000	(1)							
45	S14,S15	Sensor	DELIN	DL-12	24VDC	2	YE15122400000	(1)							
46	X1	Terminal board	PHOENIX	SAK-35	--	6	YE61350040000								
47			PHOENIX	TB35 PE I	--	1	YE61353500000								
48			--	TB2.5B I	32A	3	YE61250040000								
49			--	TB2.5 PE I	--	1	YE61253500000								
50			--	TB2.5B I	32A	3	YE61250040000	(2)							
版本		Ver.B		(3)Means optional accessories of decusting blower; (4) Means optional accessories of full-receive alarm device (5)S1 and for conveying belt optional accessories.		Drawing NO:									
				Title		Scale		Page							
				SG-7090B		SG-7090B-4.00V-GB-B-8		8							
				Electrical Components List 2		Standard		GB							
				Version		B		Voltage							
				Approved by				Frequency							
				Date		20160709		400V							
Mark		Before modification		Modified by		Modify date		50HZ							

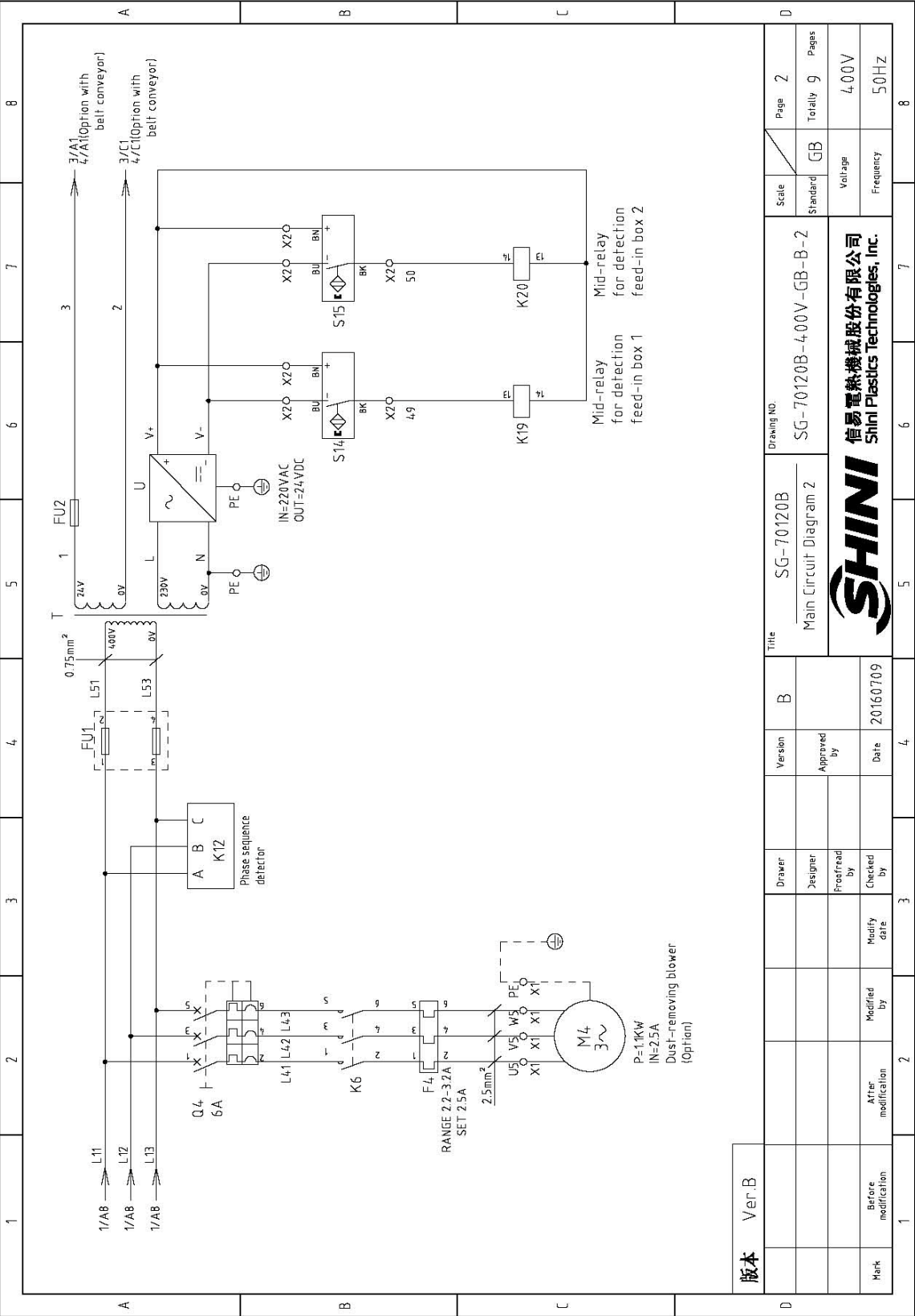


1		2		3		4		5		6		7		8	
NO.	Symbol	Name	Manufacturer	Type	Specification	Number	Material number	Remark							
51			--	TB2.5 PEI	--	1	YE61253500000	(2)							
52			--	TB2.5B I	32A	3	YE61250040000	(3)							
53			--	TB2.5 PEI	--	1	YE61253500000	(3)							
54			--	TB2.5B I	32A	2	YE61250040000	(5)							
55	X2 X3	Terminal board	PHOENIX	TB2.5B I	32A	24	YE61250040000								
56			PHOENIX	TB2.5 PEI	--	1	YE61253500000								
57			--	TB2.5B I	32A	4	YE61250040000	(4)							
58	X4	Terminal board	--	NCT-70PE	--	1	YE61070000000								
59	Y11 Y12 Y13 Y14	Solenoid valve	----	----	24VAC 50/60Hz	4	----	(1)							
60	X5	Metal tie in	SHINI	PLT-162-RR(※)	2P	1	YE68016200100	(1)(5)							
61	H3	Buzzer	TEND	EA-2	24VAC	1	YE84240200000	(1)(4)							
62	MS	Material level switch	SIPAI	SR-80	24VAC	1	YE15802400100	(1)(4)							
63	X10	Metal tie in	APEX	PLT-254-PM	4P	1	YE68025400000	(1)(4)							
64			APEX	PLT-254-RF	4P	1	YE68025400100	(1)(4)							
65	M1	Motor	--	75KW	400V 50Hz	1	----	(1)							
66	M2	Oil pump motor	--	15KW	400V 50Hz	1	----	(1)							
67	M3	Blower	--	7.5KW	400V 50Hz	1	----	(1)(2)							
68	M4	Blower	--	1.1KW	400V 50Hz	1	----	(1)(3)							
C															
D															
版本 Ver.B															
				Drawer		Version		Title		Drawing NO.		Scale		Page	
				Designer		Approved by		SG-7090B		SG-7090B-400V-GB-B-9		Standard		9	
				Proofread by		Date		Electrical Components List 3				GB		Totally 9 Pages	
				Checked by		20160709		SHINI		Voltage		400V		Frequency	
Mark		Before modification		After modification		Modified by		SHINI 信易塑料機械股份有限公司 Shini Plastics Technologies, Inc.		50HZ		8			



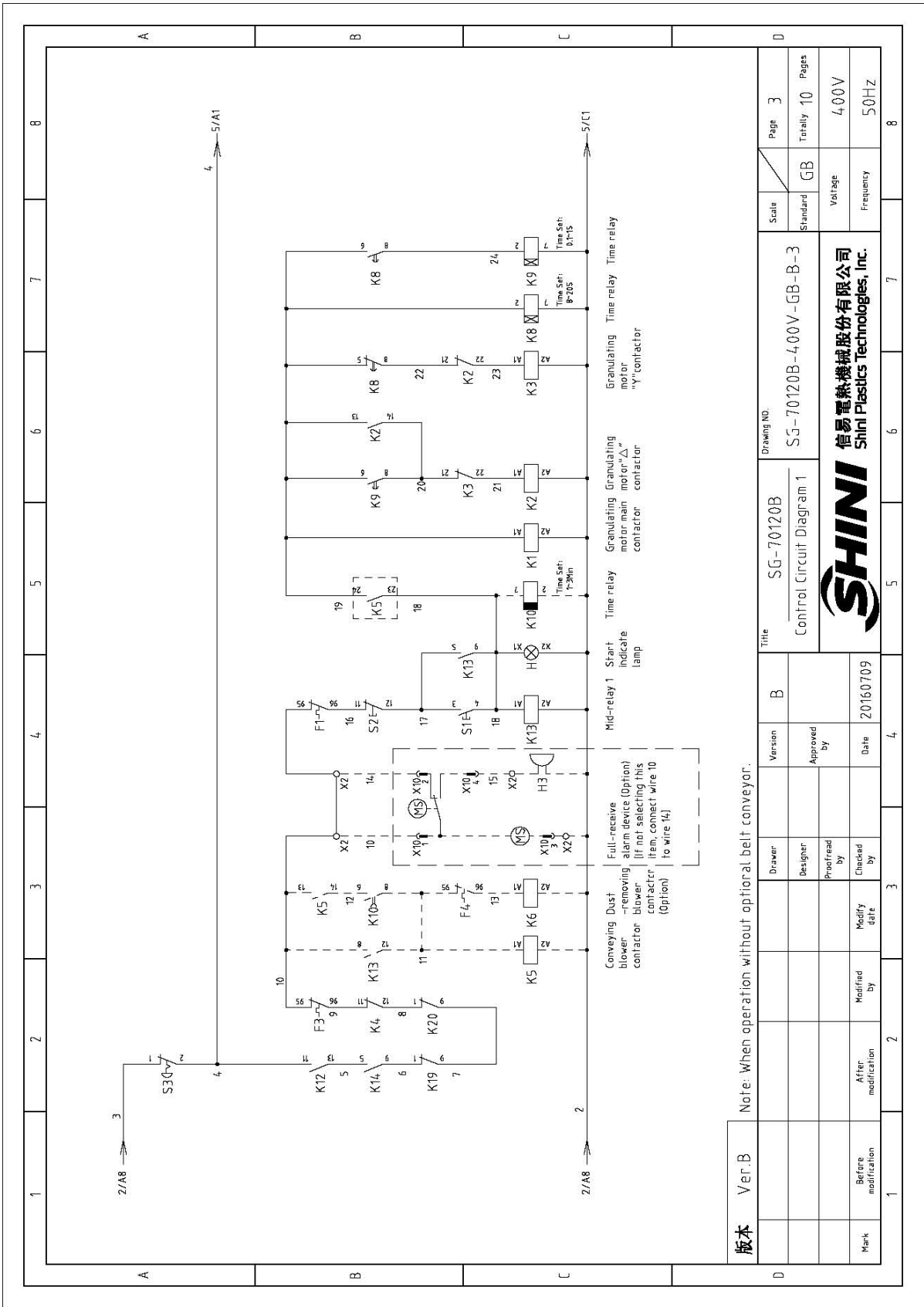
版本 VER. B		Title SG-70120B Main Circuit Diagram 1		Drawing NO. SG-70120B-4.00V-GB-B-1		Scale Standard		Page 1 Totally 9	
Mark Before modification After modification		Designer Approved by Date 2016/07/09		Version Approved by Date		Standard GB		Voltage 4.00V	
Modify date Modified by		Checked by		Date		Frequency 50HZ		Page 1 Totally 9	

SHINI
 信易電熱機械股份有限公司
 Shini Plastics Technologies, Inc.



版本	Ver B
Mark	Before modification
	After modification
	Modified by
	Modify date

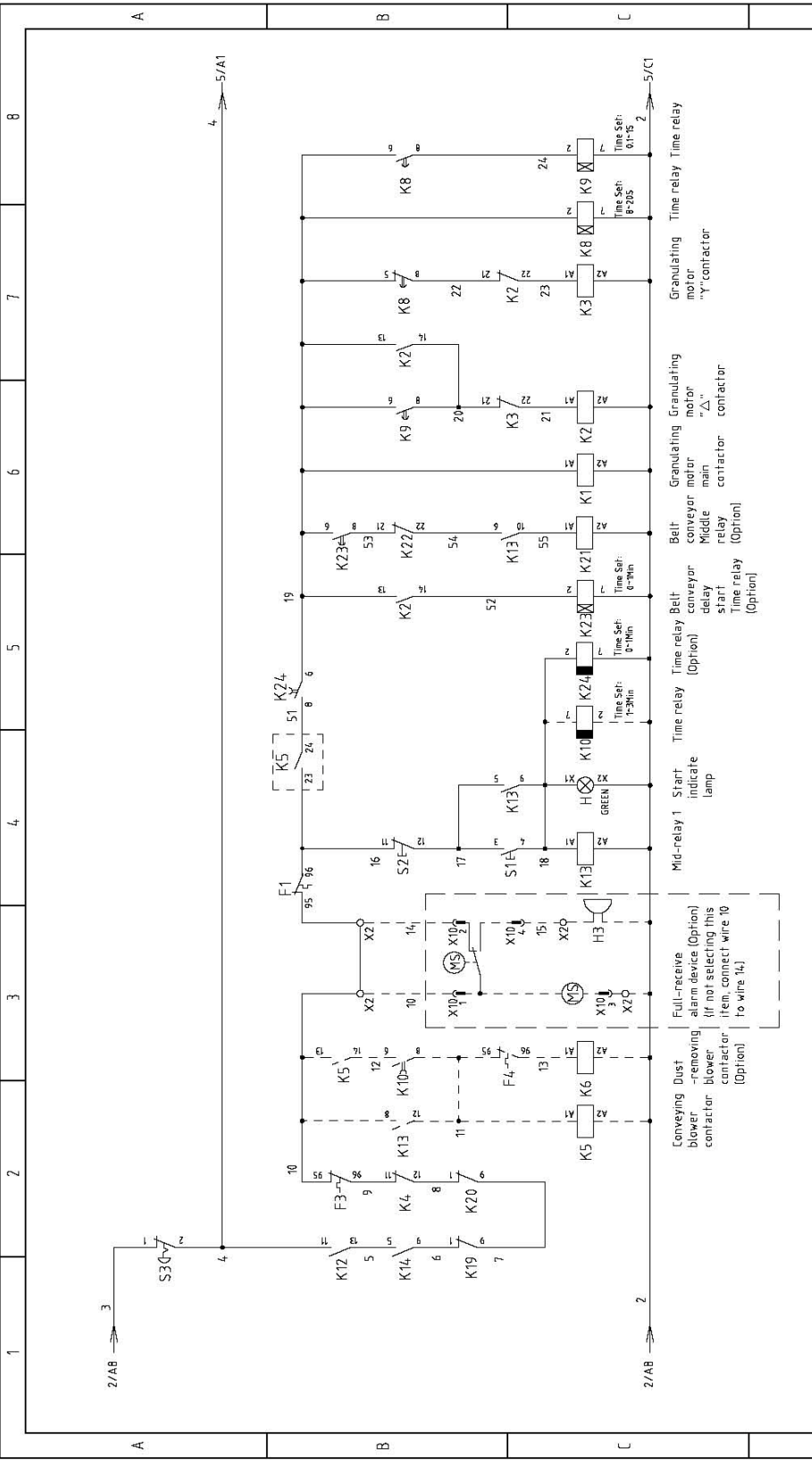
Drawer		Version	B	Title	SG-70120B Main Circuit Diagram 2	Scale	Standard	Page	2
Designer		Approved by		Drawing NO.	SG-70120B-400V-GB-B-2	Standard	GB	Totally	9
Checked by		Date	20160709	 信易電熱機械股份有限公司 Shini Plastics Technologies, Inc.		Voltage	400V		
Modify date						Frequency	50Hz		



版本 Ver.B Note: When operation without optional belt conveyor.

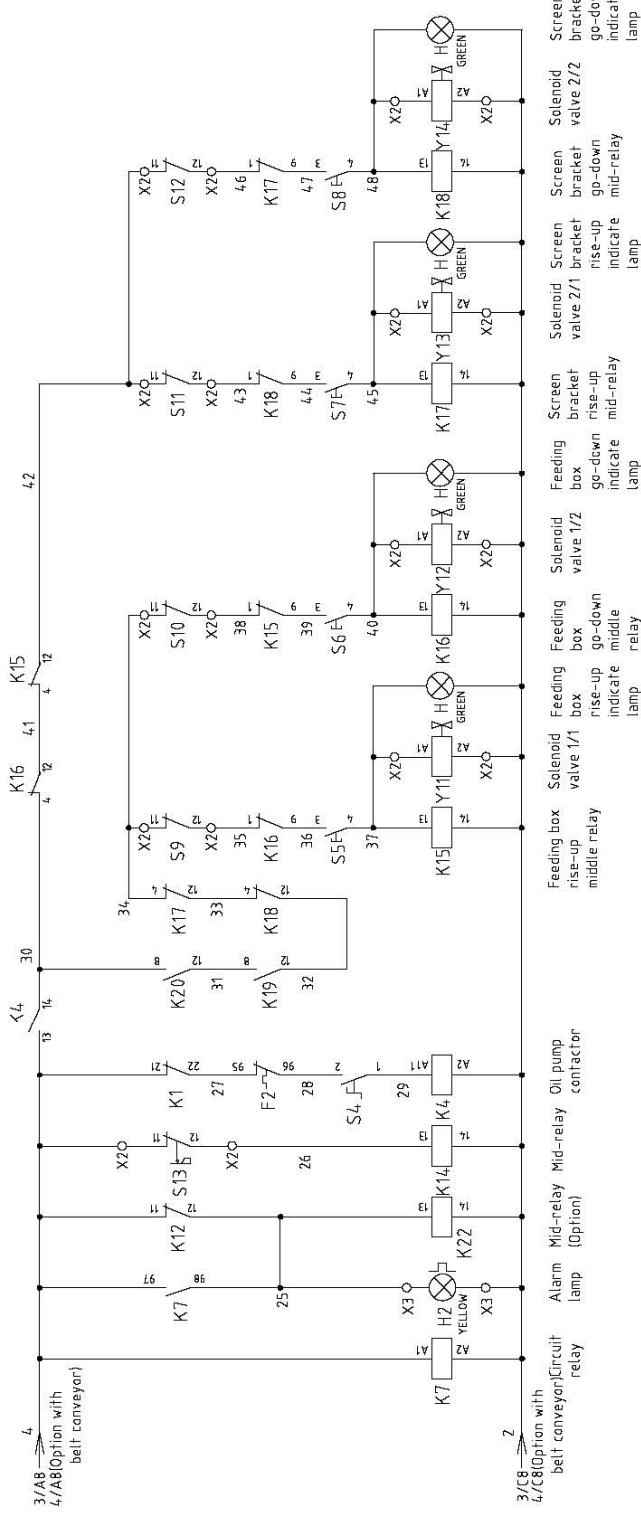
Scale	Standard	Page	3
Standard	GB	Totally	10
Pages		Pages	400V
Frequency		Frequency	50Hz
Drawing NO.		S5-70120B-400V-GB-B-3	
Title		SG-70120B Control Circuit Diagram 1	
Version	B	Designer	
Approved by		Checked by	
Date	20160709	Modify date	
After modification		Before modification	





版本	Ver.B	Note: When operation with optional belt conveyor.			Drawing No.		Scale		Page	4
Mark	Before modification	After modification	Modified by	Modify date	Designer	Approved by	Version	Title	SG-70120B	SG-70120B-4.00V-GB-B-4
								Control Circuit Diagram 2	Standard	GB
									Totally	9
									Voltage	400V
									Frequency	50Hz
										8

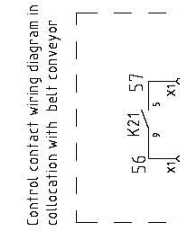




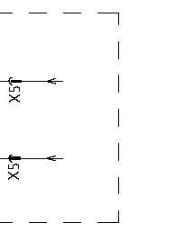
版本 Ver.B

Drawer	Version	Title	Drawing NO.	Scale	Page
Designer	B	SG-70120B	SG-70120B-4.00V-GB-B-5	Standard	5
Proofread by	Approved by	Control Circuit Diagram 3		GB	Totally 9
Checked by	Date			Voltage	4.00V
Modify date	20160709			Frequency	50HZ
Mark	After modification				
Before modification					

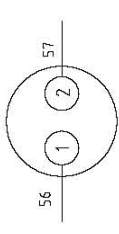




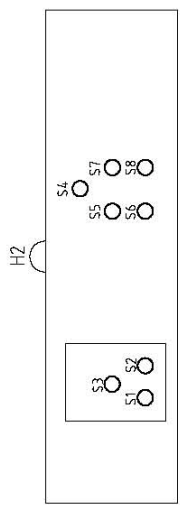
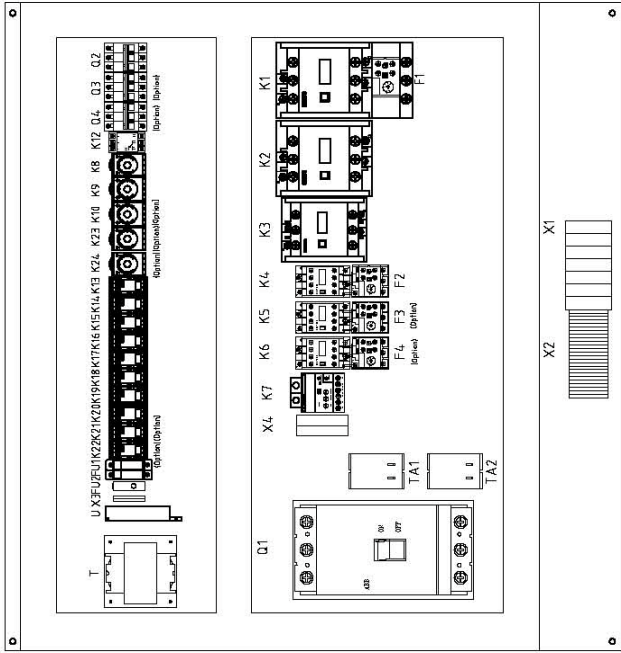
Control contact wiring diagram in collocation with belt conveyor



X5
Connection diagram of metal connectors
Connect to belt conveyor(option)

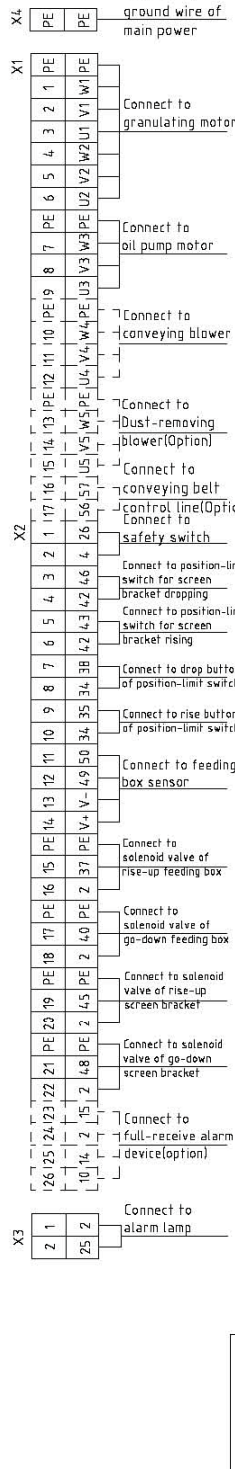
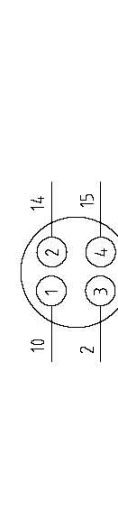


X10
Connection diagram of metal connectors
Connect to full-receive alarm device(option)



Control panel
S1:Start button
S2:Stop button
S3:Emergency stop button
S4:Oil pump start button
S5:Rise button of feeding box
S6:Drop button of feeding box
S7:Rise button of screen bracket
S8:Drop button of screen bracket

X10
Connection diagram of metal connectors
Connect to full-receive alarm device(option)



X3
Connect to alarm lamp

X10
Connect to full-receive alarm device(option)

X11
Connect to ground wire of main power

X12
Connect to granulating motor

X13
Connect to oil pump motor

X14
Connect to conveying blower

X15
Connect to Dust-removing blower(Optional)

X16
Connect to conveying belt control line(Optional)

X17
Connect to safety switch

X18
Connect to position-limit switch for screen bracket dropping

X19
Connect to position-limit switch for screen bracket rising

X20
Connect to drop button of position-limit switch

X21
Connect to rise button of position-limit switch

X22
Connect to feeding box sensor

X23
Connect to solenoid valve of rise-up feeding box

X24
Connect to solenoid valve of go-down feeding box

X25
Connect to solenoid valve of rise-up screen bracket

X26
Connect to solenoid valve of go-down screen bracket

X27
Connect to full-receive alarm device(option)

X28
Connect to

X29
Connect to

X30
Connect to

X31
Connect to

X32
Connect to

X33
Connect to

X34
Connect to

X35
Connect to

X36
Connect to

X37
Connect to

X38
Connect to

X39
Connect to

X40
Connect to

X41
Connect to

X42
Connect to

X43
Connect to

X44
Connect to

X45
Connect to

X46
Connect to

X47
Connect to

X48
Connect to

X49
Connect to

X50
Connect to

X51
Connect to

X52
Connect to

X53
Connect to

X54
Connect to

X55
Connect to

X56
Connect to

X57
Connect to

X58
Connect to

X59
Connect to

X60
Connect to

X61
Connect to

X62
Connect to

X63
Connect to

X64
Connect to

X65
Connect to

X66
Connect to

X67
Connect to

X68
Connect to

X69
Connect to

X70
Connect to

X71
Connect to

X72
Connect to

X73
Connect to

X74
Connect to

X75
Connect to

X76
Connect to

X77
Connect to

X78
Connect to

X79
Connect to

X80
Connect to

X81
Connect to

X82
Connect to

X83
Connect to

X84
Connect to

X85
Connect to

X86
Connect to

X87
Connect to

X88
Connect to

X89
Connect to

X90
Connect to

X91
Connect to

X92
Connect to

X93
Connect to

X94
Connect to

X95
Connect to

X96
Connect to

X97
Connect to

X98
Connect to

X99
Connect to

X100
Connect to

Version	B	Title	
Designer		SG-70120B	
Drawn by		SG-70120B-4.00V-GB-B-6	
Checked by		Electrical Components Layout	
Modified by		Scale	
After modification		Standard	
Before modification		Page 6	
Check date		Totally 9 Pages	
Specify date		Voltage 4.00V	
		Frequency 50Hz	



信易電熱機械股份有限公司
Shini Plastics Technologies, Inc.

版本 Ver.B Note: Power directly connected to the breaker. Interlocks which not pass by the terminal board. The wiring of breaker. Interlock is lower wire in upper wire out, the lower wire connect to input power cable.

1	2	3	4	5	6	7	8		
NO.	Symbol	Name	Manufacturer	Type	Specification	Number	Material number	Remark	
1	Q1	Gate-circuit breaker	ABB	A3N4-00TMF320/32003PPF	320A	1	YE415034400000		
2	Q2	Circuit breaker	TECO	BM-63C/3P	10A	1	YE40301003000	(2)	
3	Q3	Circuit breaker	TECO	BM-63C/3P	40A	1	YE40304003000	(2)	
4	Q4	Circuit breaker	TECO	BM-63C/3P	6A	1	YE40300603000	(3)	
5	K1,K2	Contact	SIEMENS	3RT5054-1AB36	24VAC 50/60Hz	2	YE00505400900		
6	K3	Contact	SIEMENS	3RT5046-1AC20	24V 50/60Hz	1	YE00504602600		
7	K4	Contact	SIEMENS	3RT6015-1AB02	24V 50/60Hz	1	YE00601502600		
8		Assistant point	SIEMENS	3RH6911-1AA10	1NO	2	YE00691100000		
9	K5	Contact	SIEMENS	3RT6025-1AC20	24V 50/60Hz	1	YE00602502600	(2)	
10		Assistant point	SIEMENS	3RH6911-1AA10	1NO	1	YE00691100000	(2)	
11	K6	Contact	SIEMENS	3RT6015-1AB02	24V 50/60Hz	1	YE00601502600	(3)	
12	K7	Circuit relay	SCHNEIDER	LT4706BA	0.5-6A I24VAC/DC	1	YE04047601200		
13	K8	Timer relay	YUYUN	TH3A-NAB	24VAC/DC 0-60S	1	YE86602400300		
14	K9	Timer relay	YUYUN	TH3M-NAB	24VAC/DC 0-3S/60Min	1	YE86123000000		
15	K10	Timer relay	YUYUN	TRF-N	24VAC/DC 0-3Min	1	YE86032400000	(2)	
16	K12	Phase sequence protector	CHAOSHI	ABJ-10W	400V 50/60Hz	1	YE03103800000		
17	K13	Middle relay	Honeywell	GR-2C-AC24V	24VAC	1	YE03022400300		
18	K13	Middle relay	Honeywell	GR-4C-AC24V	24VAC	1	YE03042400300	(5)	
19	K14-K18	Middle relay	Honeywell	GR-2C-AC24V	24VAC	5	YE03022400300		
20	K19,K20	Middle relay	WEDMULLER	DRM270024LT	24VDC	2	YE03272400000		
21	K21,K22	Middle relay	Honeywell	GR-2C-AC24V	24VAC	2	YE03022400300	(5)	
22	K23	Timer relay	YUYUN	TH3A-NAB	24VAC/DC 0-60S	1	YE86602400300	(5)	
23	K24	Timer relay	YUYUN	TRF-N	24VAC/DC 0-3Min	1	YE86032400000	(5)	
24	F1	Overload relay	SIEMENS	3RU5146-4MB0	80-100A	1	YE01514680000		
25	F2	Overload relay	SIEMENS	3RU6116-1EB0	2.8-4A	1	YE01160280000		
版本		Notes: (1)Means it's not the material inside the control box(2) Stand for conveying belt optional accessories.							
Ver.B		Title		Drawing NO.		Scale		Page	
		SG-70120B		SG-70120B-4.00V-GB-B-7		Standard		Page 7	
		Electrical Components List 1				GB		Totally 9	
		Version		Approved by		Voltage		4.00V	
		Designer		Date		Frequency		50HZ	
		Proofread by		20160709					
		Checked by							
Mark		After modification		Modify date					
Before modification		Modified by							
1	2	3	4	5	6	7	8		



1		2		3		4		5		6		7		8			
NO.	Symbol	Name	Manufacturer	Type	Specification	Number	Material number	Remark									
26	F3	Overload relay	SIEMENS	3RU6126-4BB0	14-20A	1	YE0126014.0000	(2)									
27	F4	Overload relay	SIEMENS	3RU6116-IDB0	2.2-3.2A	1	YE0116022.0000	(3)									
28	FU1	Fuse	CHNT	RT28-32	2P	1	YE4103220.0000										
29	FU2	Fuse core	MRO	10x38 500V	2A	2	YE46002000100										
30	FU2	Fuse	YINDA	FS-10	----	1	YE410010000000										
31		Fuse core	----	6x30	10A	1	YE4663104.0000										
32	TA1,TA2	Current mutual inductance	RATID	RCT-35	150V/5A	2	YE041505000000										
33	T	Transformer	BAIYUN	IN=400V OUT=24V/230V	24V 350VA / 230V 350mA	1	YE7004.0005800										
34	H2	Alarm lamp	SHINI	LED-3051	24VAC	1	YE8330510.0900	(1)									
35	U	DC power	MEANWELL	EPR-35-24.15A	IN100-24.0V OUT24V	1	YE713524.00100										
36	S1, S5-S8(H)	Start button	SCHNEIDER	XB2BW33MTC	4.00VAC	5	YE112331000000										
37	S2	Stop button	SCHNEIDER	XB2BA22C	4.00VAC	1	YE112220000000										
38	S3	Emergency stop button	SCHNEIDER	XB2BS542C	4.00VAC	1	YE112542000000										
39	S4	Selector switches	ABB	C2552-10B-10	UI=300V Ith=5A	1	YE122101000000										
40	S9, S10, S11, S12	Limit switch	SCHMERSAL	TS236-11Z-M20	500V	4	YE103612000000	(1)									
41	S13	Safety switch	SCHMERSAL	AZ17-11ZK	AZ-17	1	YE161711000000	(1)									
42	S14, S15	Sensor	DELIN	DL-12	24VDC	2	YE15124.000000	(1)									
43	X1	Terminal board	PHOENIX	SAK-35	--	6	YE6135004.0000										
44			PHOENIX	TB35 PE I	--	1	YE613535000000										
45			--	TB2.5B I	32A	3	YE6125004.0000										
46			--	TB2.5 PE I	--	1	YE612535000000										
47			--	TB2.5B I	32A	3	YE6125004.0000	(2)									
48			--	TB2.5 PE I	--	1	YE612535000000	(2)									
49			--	TB2.5B I	32A	3	YE6125004.0000	(3)									
50			--	TB2.5 PE I	--	1	YE612535000000	(3)									
版本		Ver.B		(3)Means optional accessories of decutting blower; (4) Means optional accessories of full-receive alarm device.(5)Stand for conveying belt optional accessories.													
D		Drawer		Version		B		Title		SG-70120B		Drawing NO.		Scale		Page	
		Designer		Approved by				Electrical Components List 2		SG-70120B-4.00V-GB-B-8		Standard		GB		Page 8	
Mark		Before modification		After modification		20160709		SHINI		信易電熱機械股份有限公司		Voltage		4.00V		Frequency	
		Modify date		Date				SHINI		Shini Plastics Technologies, Inc.		Frequency		50HZ		Totally 9	
1		2		3		4		5		6		7		8		8	

1		2		3		4		5		6		7		8	
NO.	Symbol	Name	Manufacturer	Type	Specification	Number	Material number	Remark							
51			--	TB2.5B I	32A	2	YE6125004.0000	(5)							
52	X2 X3	Terminal board	PHOENIX	TB2.5B I	32A	24	YE6125004.0000								
53			PHOENIX	TB2.5 PE I	--	1	YE6125350000	(4)							
54			--	TB2.5B I	32A	4	YE6125004.0000								
55	X4	Terminal board	--	NCT-70PE	--	1	YE610700000000	(1)							
56	Y11 Y12 Y13 Y14	Solenoid valve	----	----	24VAC 50/60Hz	4	----	(1)(5)							
57	X5	Metal tie in	SHINI	PLT-16Z-RR(A)	2P	1	YE68016200100	(1)(4)							
58	H3	Buzzer	TEND	EA-2	24VAC	1	YE8424.0200000	(1)(4)							
59	MS	Material level switch	SIPAI	SR-80	24VAC	1	YE158024.00100	(1)(4)							
60	X10	Metal tie in	APEX	PLT-254-PM	4P	1	YE680254.00000	(1)(4)							
61			APEX	PLT-254-RF	4P	1	YE680254.00100	(1)(4)							
62	M1	Motor	--	90KW	400V 50Hz	1	----	(1)							
63	M2	Oil pump switch	--	15KW	400V 50Hz	1	----	(1)							
64	M3	Blower	--	7.5KW	400V 50Hz	1	----	(1)(2)							
65	M4	Blower	--	1.1KW	400V 50Hz	1	----	(1)(3)							
版本 Ver.B															
D				Drawer		Version		Title		Drawing NO.		Scale		Page	
				Designer		Approved by		SG-70120B Electrical Components List 3		SG-70120B-4.00V-GB-B-9		Standard		Page 9	
				Proofread by		Date		SHINI 信易電熱機械股份有限公司 Shini Plastics Technologies, Inc.		GB		Voltage		Totally 9 Pages	
Mark		Before modification		After modification		Modify date		20160709		Frequency		4.00V		50HZ	
1		2		3		4		5		6		7		8	