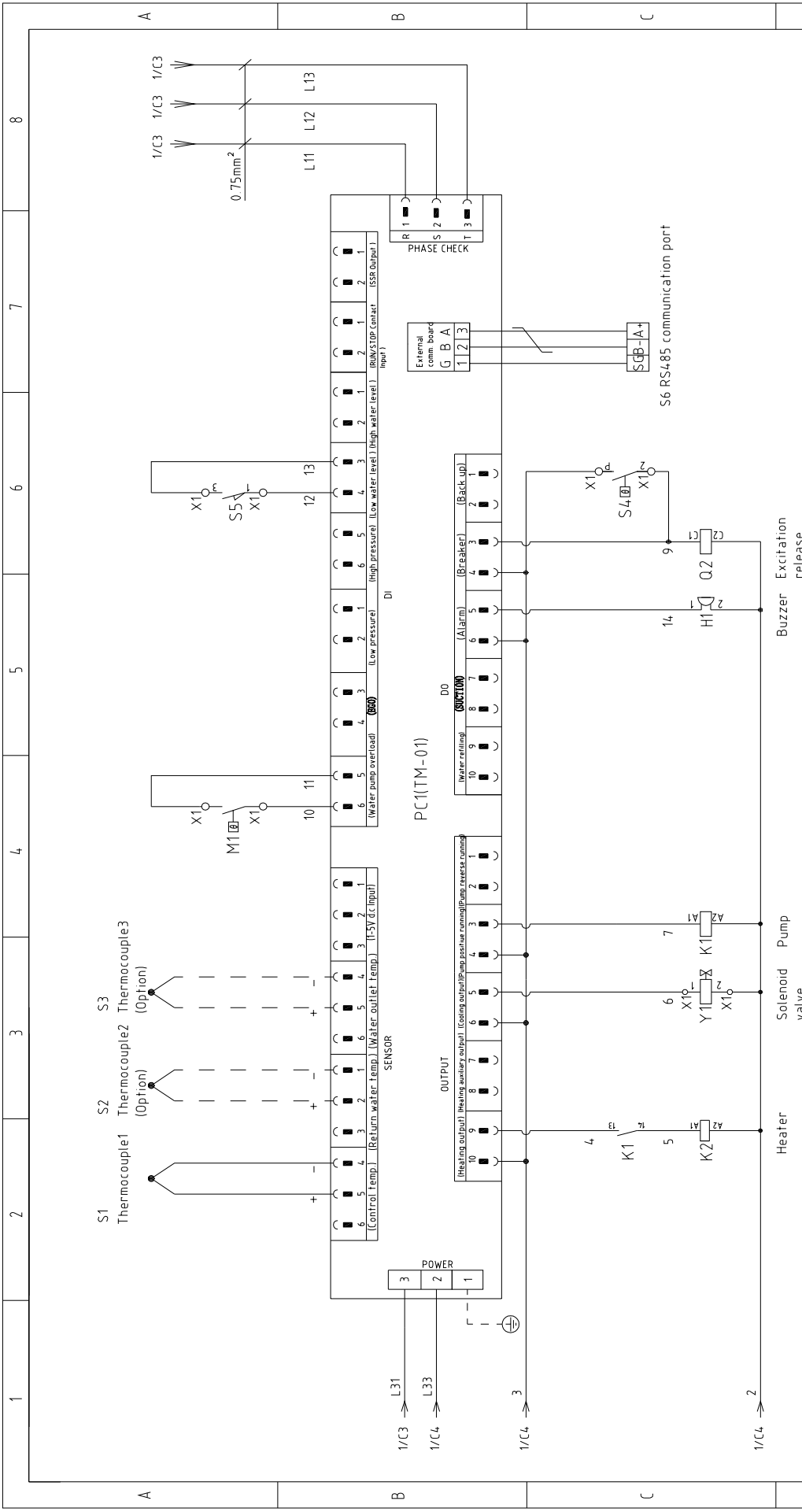


STM-607 版本 Ver.H
 STM-607M 版本 Ver.F

When equipped with magnetic pump P=0.55KW IN=1.7A

D	Mark	Before modification	Modified by	2	3	4	5	6	7	8
	After modification	Modify date	Checked by	20180723						
D	Version	Designer	Proofread by	Approved by	K	Title		Drawing NO		
						STM-607	STM-607	STM-607-CE-230V-K-1	Scale	Page 1
						Main Circuit Diagram		Standard	Totally 4	Pages
								Voltage	230V	
								Frequency	50Hz	





STM-607 版本 Ver.H
 STM-607M 版本 Ver.F

Note: M1 is the overheat protection output contact of water pump.

Drawing NO		STM-607-CE-230V-K-2	
Title		Control Circuit Diagram	
Scale	Standard	CE	Pages
		Voltage	230V
		Frequency	50HZ
Page	2	Totally	4

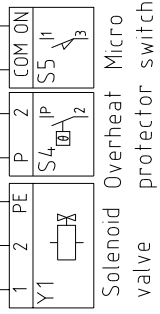
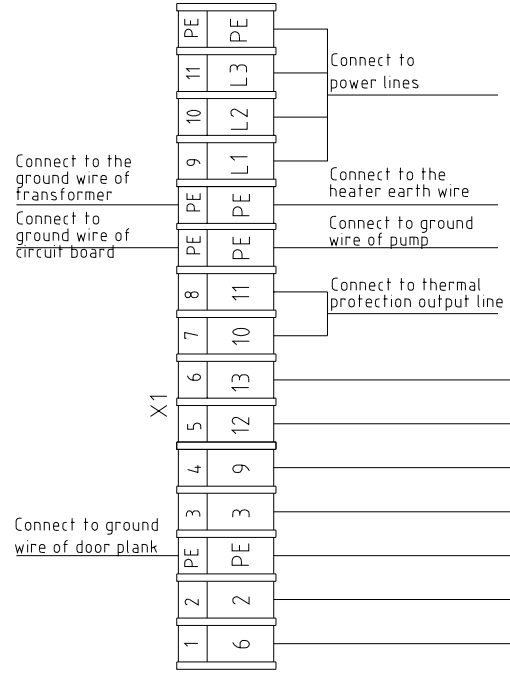
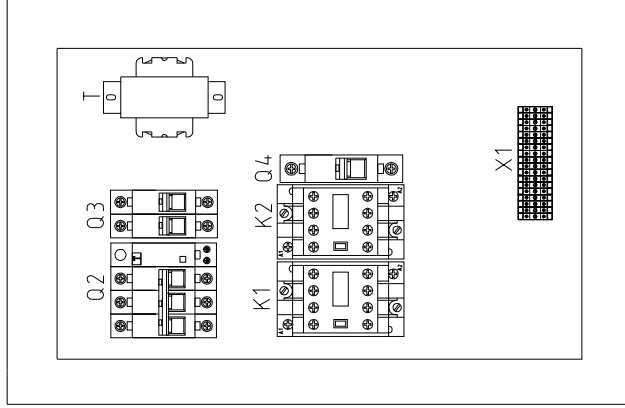
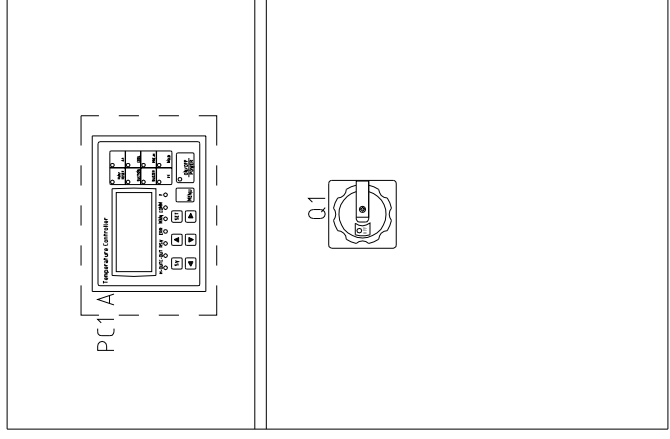


Version	K
Approved by	
Date	20180723

Modified by	
Modify date	
Checked by	
Proofread by	
Designer	
Drawer	

1 2 3 4 5 6 7 8

A B C




STM-607 版本 Ver.H
STM-607M 版本 Ver.F

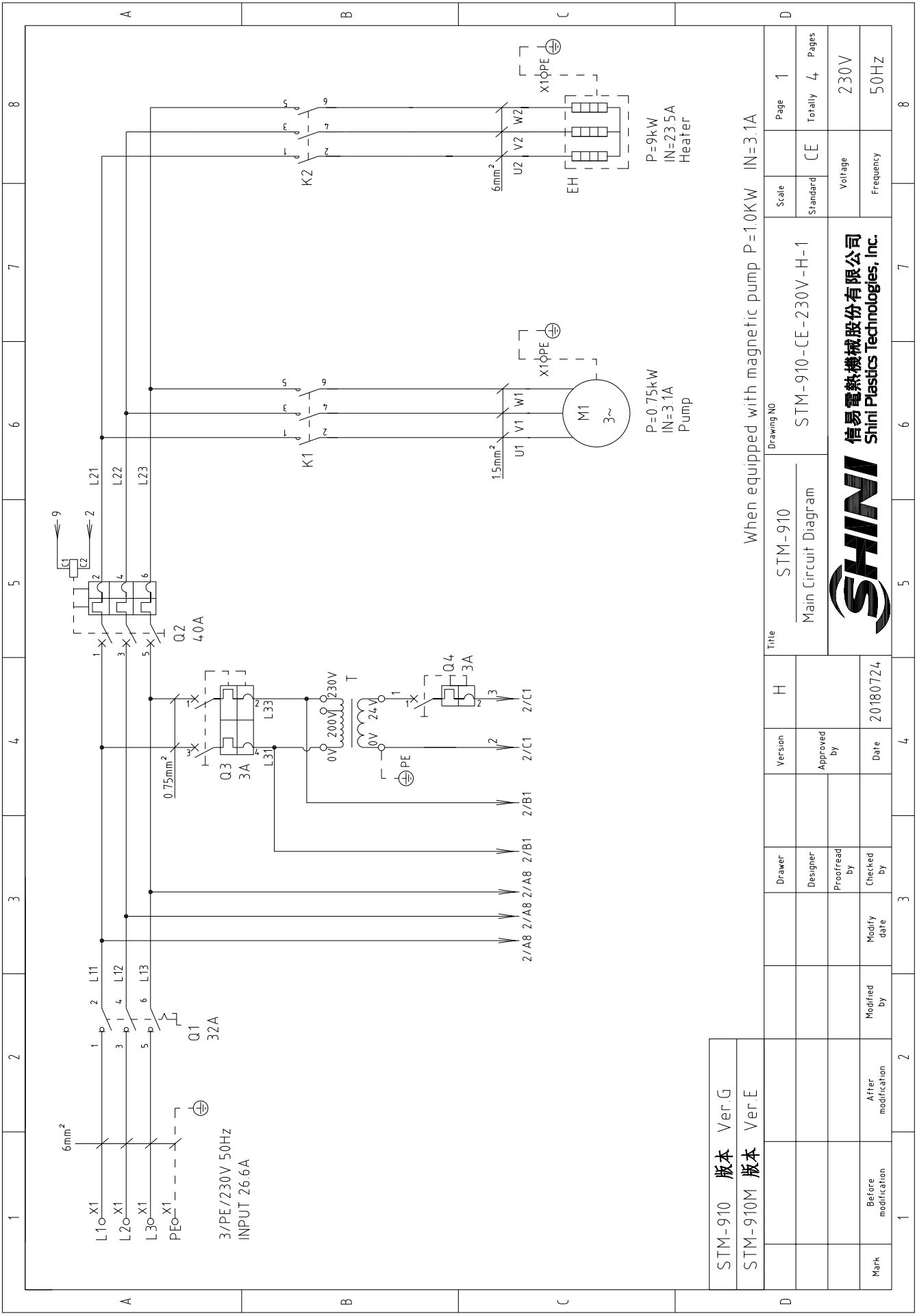
Technical requirements: (1) Pump and pipe heater should be directly connected to the output terminals of contactor and thermal overload relay.

D	Mark	Before modification	Modified by	Modified date	Checked by	Proofread by	Designer	Drawer	Version	K	Title	STM-607	Drawing NO	Scale	Page	3		
		After modification		20180723					Approved by		Electrical Components Layout	STM-607-CE-230V-K-3	Standard	CE	Totally	4		
																	Voltage	230V
																	Frequency	50HZ



1 2 3 4 5 6 7 8

1		2		3		4		5		6		7		8	
NO.	Symbol	Name	Manufacturer	Type	Specification	Number	Material number	Remark							
1	Q1	Main power switch	EATON	P1-25/EA/SVB	25A	1	YE10125250000								
2	Q2	Circuit breakers	TECO	BM-63C	25A	1	YE40302503000								
3	Q3	Excitation release	TECO	MX	24VAC	1	YE40024000000								
4	Q4	Circuit breakers	TECO	BM-63C/2003S 2P	3A	1	YE40200203000								
5	Q4	Circuit breakers	TECO	BM-63C/1003S 1P	3A	1	YE40100203000								
6	K1	Contactors	SIEMENS	3RT16015-1AB01	24VAC	1	YE00601502500								
7	K2	Contactors	SIEMENS	3RT16026-1AC20	24VAC	1	YE00602602600								
8	T	Transformer	JIUXIN	N=230V/200V OUT=24V	80VA	1	YE70023005200								
9	S1	Thermocouple	SHINI	----	K	1	----	(1)							
10	S2 S3	Thermocouple	SHINI	----	K	2	----	(1)(2)							
11	S4	Overheat protector	----	----	----	1	----	(1)							
12	S5	Limit switch	RENEW	----	250V 5(4)	1	----	(1)							
13	S6	Communication interface board RS-485 (double Dsub-9pin connector)	YUYUN	----	PCS	1	YE90048501200								
14		Shell RS485(SAL-700G-A-1910)	BINCHEG	----	PCS	1	YR40048500000								
15	PC1 A	Circuit board	YUYUN	TM-01 (含通讯)	180~430V 50/60Hz	1	YE81012200300								
16	X1	Terminal board	HONEYWELL	SK2 5	----	8	YE60002503200								
17		Terminal board	HONEYWELL	SK2 SPE	----	2	YE60002503400								
18		Terminal board	HONEYWELL	SK4	----	3	YE60000403200								
19		Terminal board	HONEYWELL	GK5PE	----	2	YE60000403500								
20	M1	Motor	SHINI	TP-55	230V 50Hz 0.55kW	1	----	(1)							
21	M1	Motor	SHINI	MP-55	230V 50Hz 0.55kW	1	----	(1)(3)							
22	EH	Heater	SHINI	6kW	230V 50Hz	1	----	(1)							
23	H1	Buzzer	JINGKANG	PK-35A	24VAC/DC	1	YE84003500600								
24	Y1	Solenoid valve	----	----	24VAC	1	----	(1)							
25		Terminal fittings E/GKseries(honeywell)	HONEYWELL	----	PCS	6	YE60000003900								
Notes: (1)Means it's not the material inside the control box (2)Means equipped with function of displaying water outlet and return water temperature. (3)Means equipped with magnetic pump															
STM-607 版本		Ver.H		STM-607M 版本		Ver.F		STM-607		Electrical Components List		STM-607-CE-230V-K-4		Scale	
		Designer		Approved by		Version		K		Drawing NO		Standard		Page	
		Proofread by		Date		20180723						CE		4	
Mark		Before modification		Modified by		Modify date						Voltage		230V	
												Frequency		50HZ	
 信易电热机械股份有限公司 Shini Plastics Technologies, Inc.															
Total Page 4 Page 4 Total Page 4															

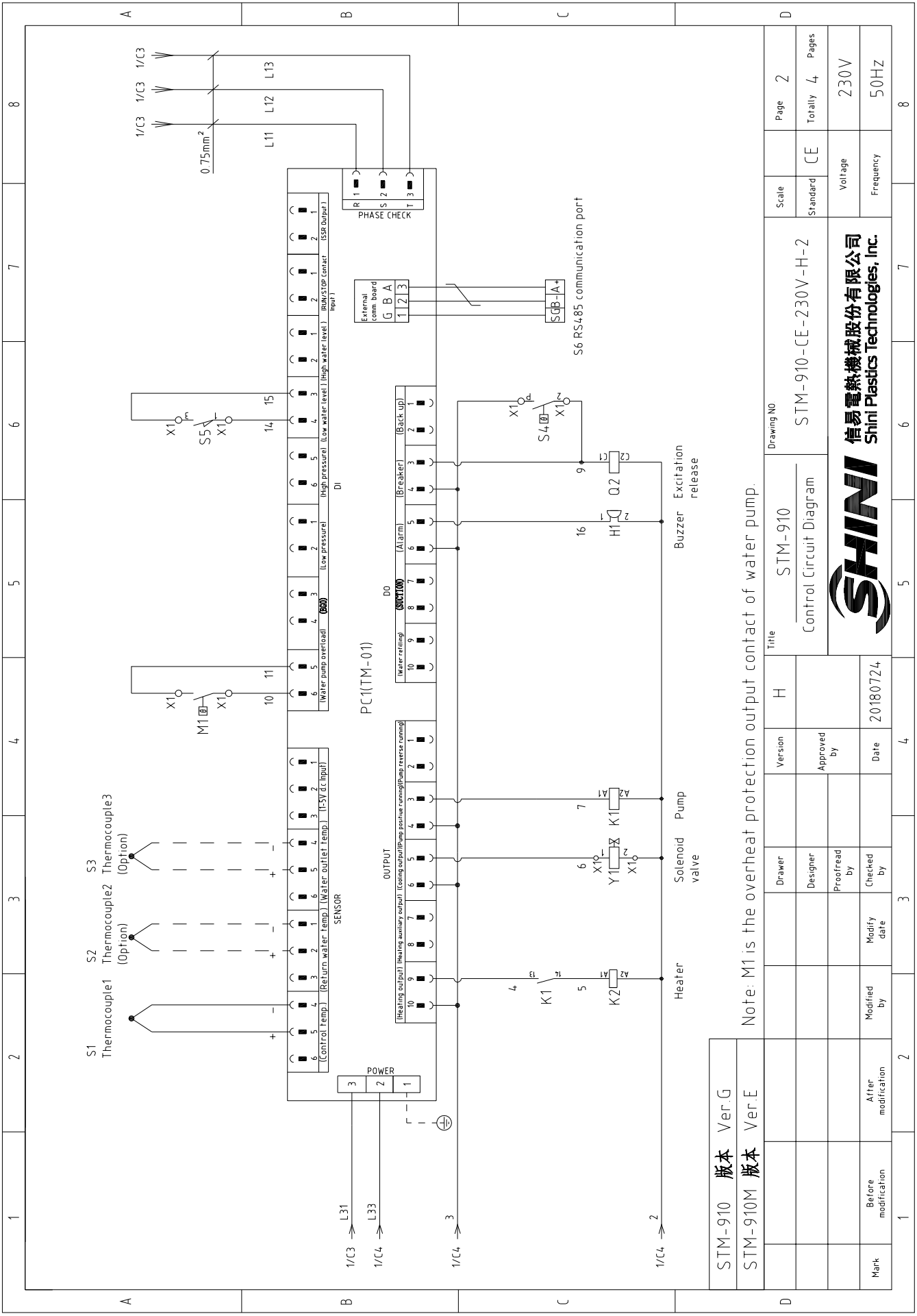


STM-910	版本	Ver.G
STM-910M	版本	Ver.E

When equipped with magnetic pump P=1.0KW IN=3.1A

D	Version	STM-910	Scale	Page 1
	Approved by	Main Circuit Diagram	Standard	Totally 4 Pages
Drawn	Designer	Proofread by	Checked by	Modified by
Date	20180724	Modify date	Voltage	230V
			Frequency	50HZ





STM-910	版本 Ver.G
STM-910M	版本 Ver.E

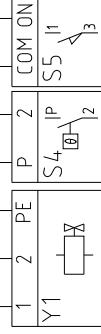
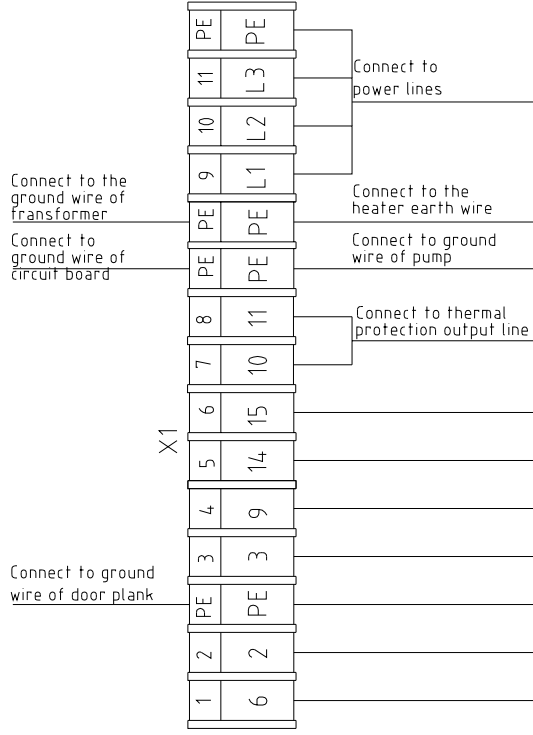
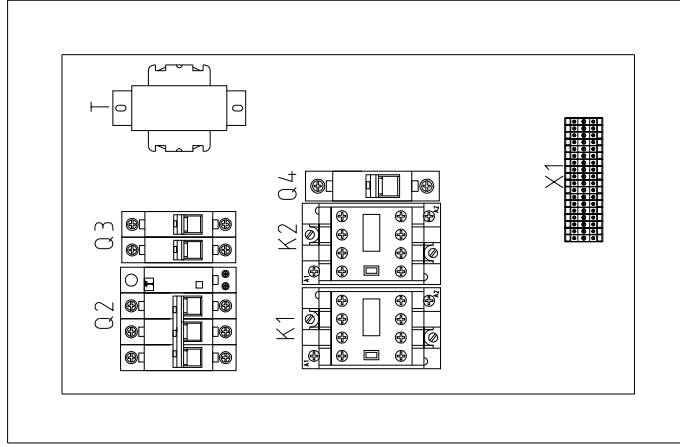
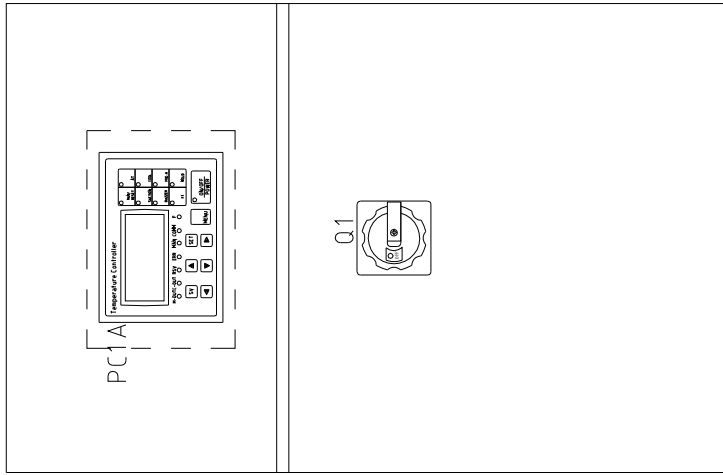
Note: M1 is the overheat protection output contact of water pump.

Title		Drawing NO	
STM-910		STM-910-CE-230V-H-2	
Version		Scale	
H		Standard	
Approved by		CE	
Proofread by		Voltage	
Checked by		Frequency	
Date		Page	
20180724		2	
Modified by		Totally	
After modification		4	
Mark		Pages	
Before modification		230V	
1		50HZ	
2		8	
3		7	
4		6	
5		5	
6		4	
7		3	
8		2	



1 2 3 4 5 6 7 8


A B C



Solenoid Overheat Micro valve protector switch

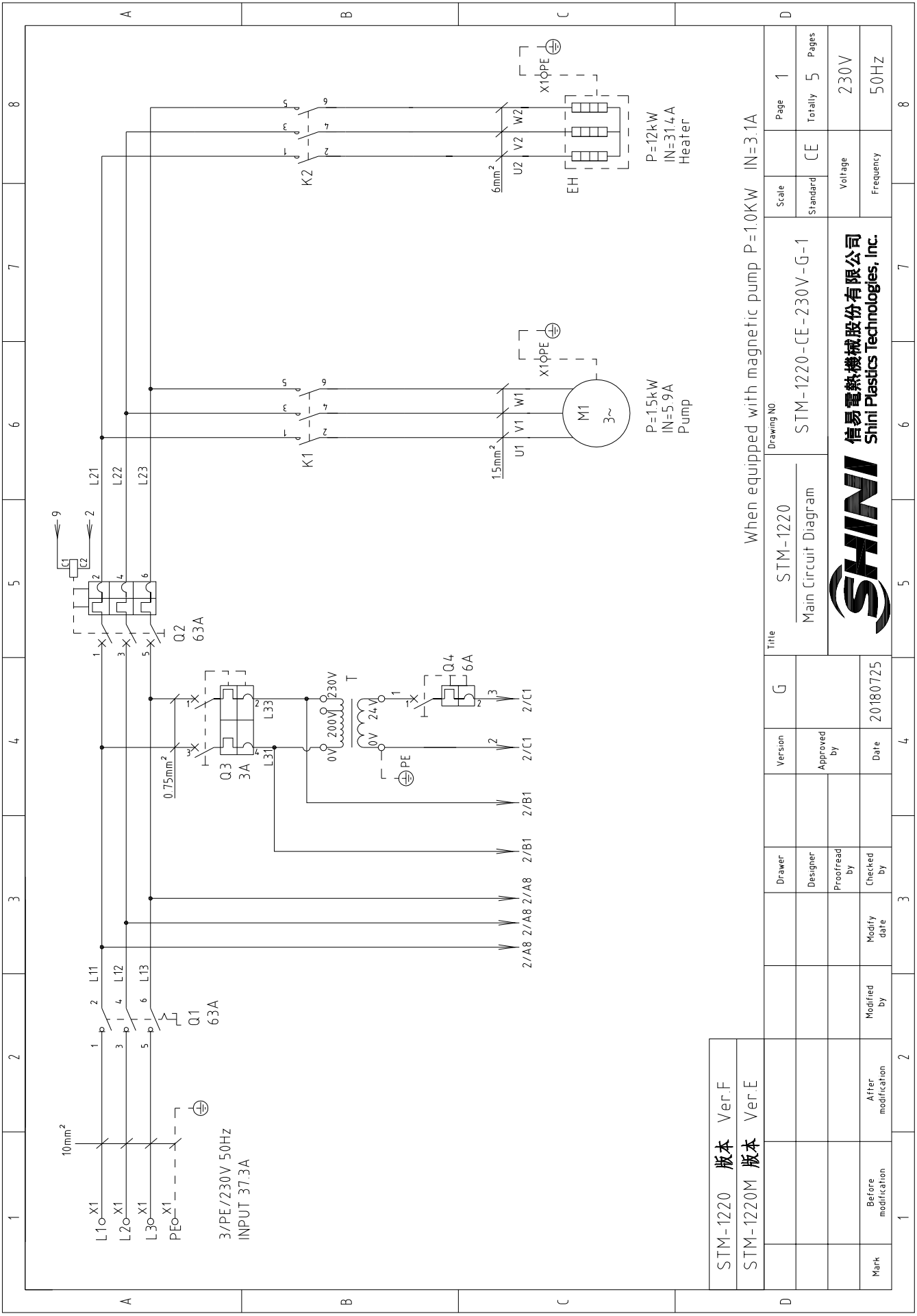
STM-910	版本	Ver.G
STM-910M	版本	Ver.E

Technical requirements: (1) Pump and pipe heater should be directly connected to the output terminals of contactor and thermal overload relay.

D	Drawer		Version	H	Title	STM-910	Drawing NO	Scale	Page	3
	Designer		Approved by		Electrical Components Layout	STM-910-CE-230V-H-3	Standard	CE	Totally	4
Mark	Before modification	Modified by	Modify date	20180724	 信易電熱機械股份有限公司 Shini Plastics Technologies, Inc.	Voltage	Frequency	230V	50HZ	
	After modification	Modified by	Modify date	20180724			Frequency	50HZ		
1 2 3 4 5 6 7 8										

1		2		3		4		5		6		7		8	
NO.	Symbol	Name	Manufacturer	Type	Specification	Number	Material number	Remark							
1	Q1	Main power switch	EATON	P1-32/EA/SVB	32A	1	YE10323200000								
2	Q2	Circuit breakers	TECO	BM-63C/304.0S	4.0A	1	YE40304.003000								
3	Q3	Excitation release	CHINT	MX	24VAC	1	YE40024.000000	A							
4	Q4	Circuit breakers	TECO	BM-63C/2003S 2P	3A	1	YE40200203000								
5	Q4	Circuit breakers	TECO	BM-63C/1003S 1P	3A	1	YE40100203000								
6	K1	Contactors	SIEMENS	3RT6015-1AB01	24VAC	1	YE00601502500								
7	K2	Contactors	SIEMENS	3RT6027-1AC20	24VAC	1	YE00602702600								
8	T	Transformer	JIUXIN	IN=230V/200V OUT=24V	80VA	1	YE70023005200								
9	S1	Thermocouple	SHINI	----	K	1	----	(1)							
10	S2 S3	Thermocouple	SHINI	----	K	2	----	(1)(2)							
11	S4	Overheat protector	----	----	----	1	----	(1)							
12	S5	Limit switch	RENEW	----	250V 5(4)	1	----	(1)							
13	S6	Communication interface board RS-485 (doub Dsub-9pin connector)	YUYUN	----	PCS	1	YE9004.8501200								
14		Shell RS485(SAL-700G-A-190)	BINCHEG	----	PCS	1	YR4004.8500000								
15	PC1 A	Circuit board	YUYUN	TM-01 (含通讯)	180~430V 50/60Hz	1	YE81012200300								
16	X1	Terminal board	HONEYWELL	SK2 5	----	8	YE60002503200								
17		Terminal board	HONEYWELL	SK2 SPE	----	2	YE60002503400								
18		Terminal board	HONEYWELL	GK6	----	3	YE60000603200								
19		Terminal board	HONEYWELL	GK6PE	----	2	YE60000603500								
20	M1	Motor	SHINI	TP-75	230V 50Hz 0.75kW	1	----	(1)							
21	M1	Motor	SHINI	MP-100	230V 50Hz 1.0kW	1	----	(1)(3)							
22	EH	Heater	SHINI	----	230V 50Hz 9kW	1	----	(1)							
23	H1	Buzzer	JINGKANG	PK-35A	24VAC/DC	1	YE84003500600								
24	Y1	Solenoid valve	----	----	24VAC	1	----	(1)							
25		Terminal fittings E/GKseries(honeywell)	HONEYWELL	----	PCS	6	YE60000003900								
STM-910 版本		Ver.G	Ver.E	Notes: (1)Means it's not the material inside the control box (2)Means equipped with function of displaying water outlet and return water temperature. (3)Means equipped with magnetic pump											
		Designer	Version	H	Title		Drawing No		Scale		Page		4		
		Proofread by	Approved by	STM-910		STM-910-CE-230V-H-4		Standard		CE		Totally		4	
		Checked by	Date	20180724				Voltage		230V		Frequency		50HZ	
Mark	Before modification	Modified by	Modify date												
1	2	3	4	5	6	7	8								



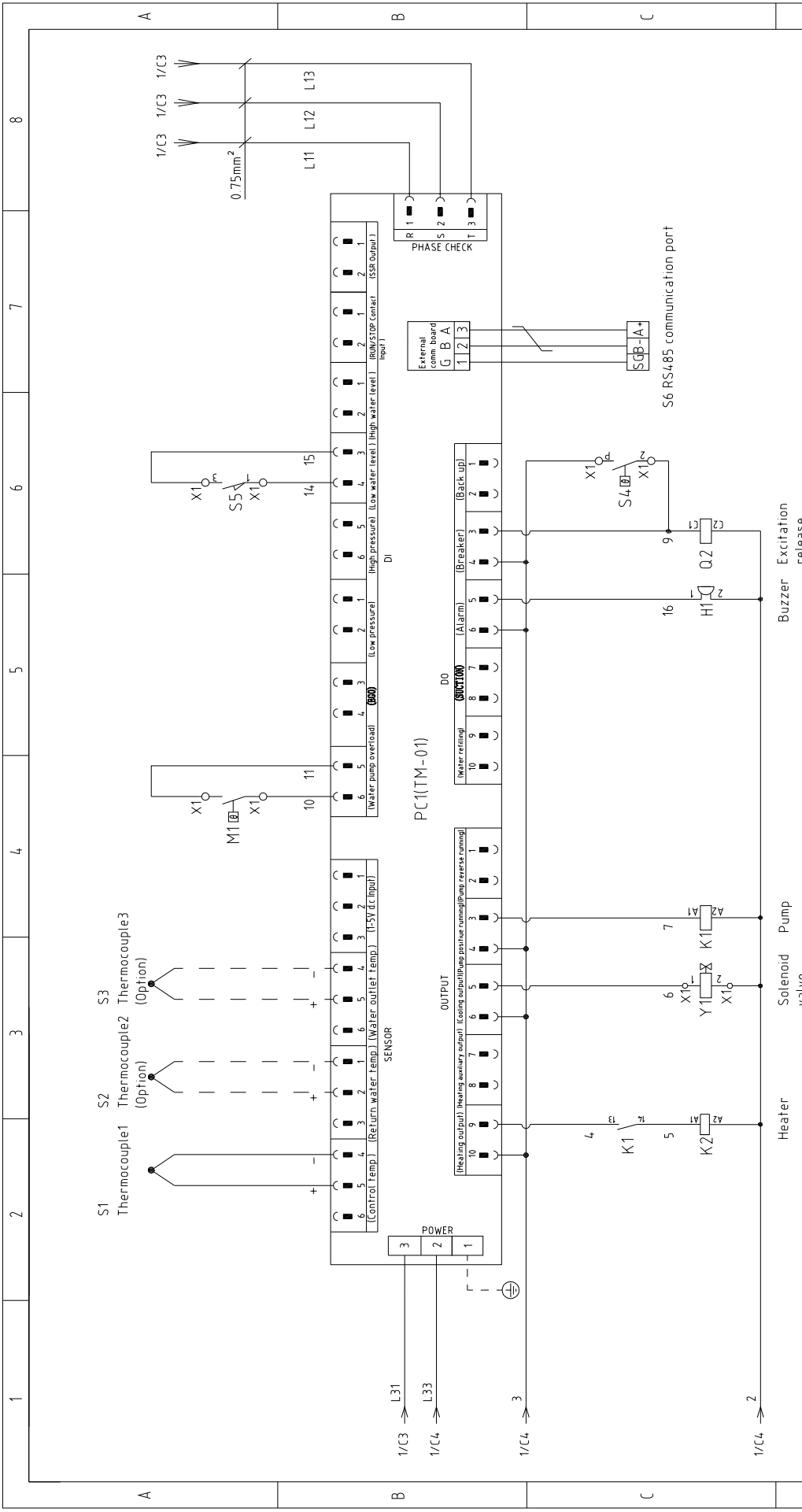


STM-1220	版本	Ver.F
STM-1220M	版本	Ver.E

When equipped with magnetic pump P=1.0KW IN=3.1A

D	Title	STM-1220	Drawing NO	Standard	Page	1
		Main Circuit Diagram		CE	Totally	5 Pages
Mark	Before modification	Modified by	Modify date	Voltage	230V	
	After modification	Modified by	Modify date		Frequency	50Hz
Version		G	Approved by			Date
Designer		Proofread by		Checked by		20180725
2/A8 2/A8 2/A8 2/B1 2/B1 2/C1		3		4		8

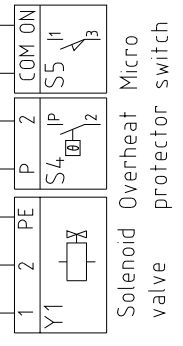
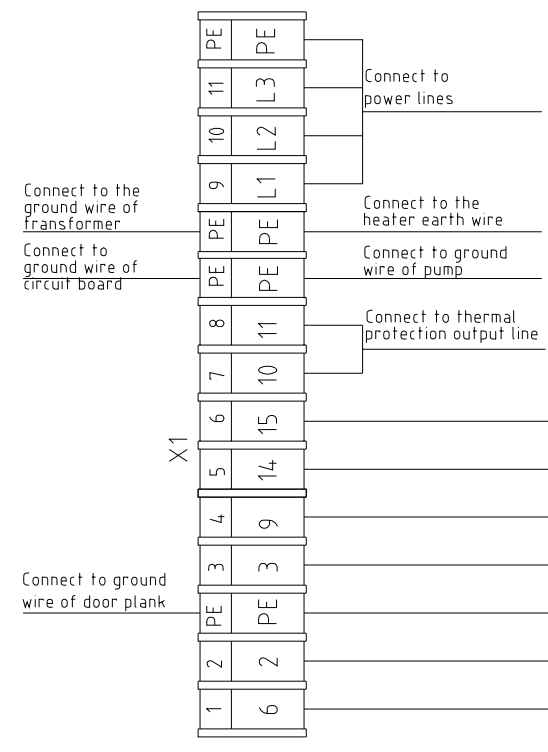
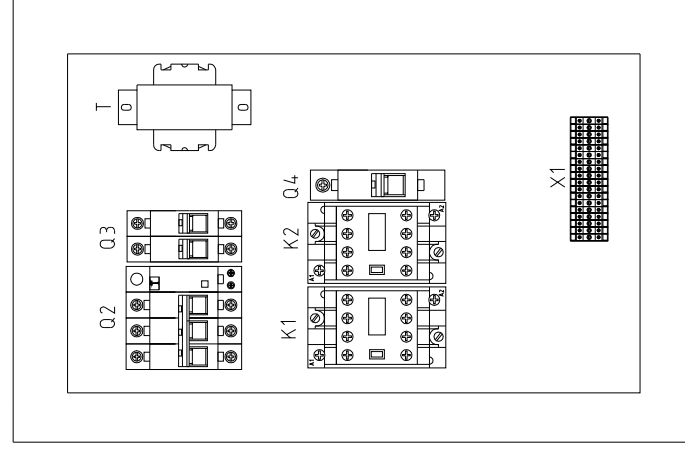
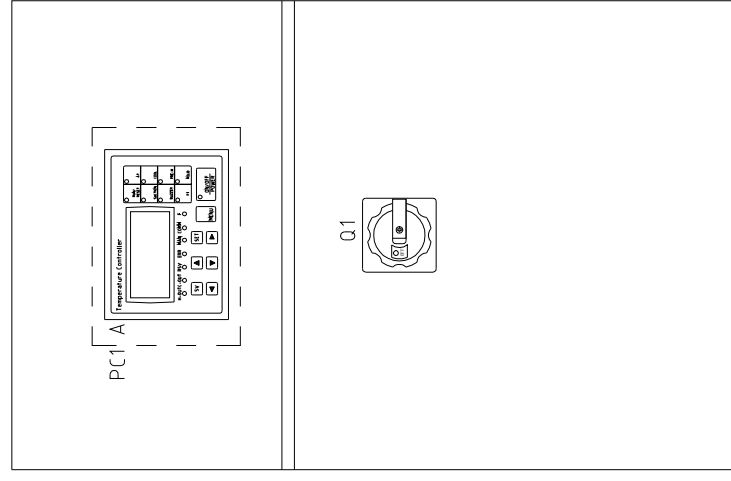




1	2	3	4	5	6	7	8
STM-1220M 版本 Ver.E		Version		Title		Drawing NO	
STM-1220 版本 Ver.F		Approved by		STM-1220		STM-1220-CE-230V-G-2	
Mark		Checked by		Control Circuit Diagram		Standard	
Before modification		Date		SHINI		Voltage	
After modification		20180725		信易电热机械股份有限公司		230V	
Modified by		2		Shini Plastics Technologies, Inc.		Frequency	
Modify date		3		5		50HZ	
Heater		4		6		7	
Solenoid valve		3		5		6	
Pump		4		5		6	
Excitation release		4		5		6	
Buzzer		4		5		6	
Scale		G		Title		Page	
Standard		Approved by		STM-1220		2	
Voltage		Date		Control Circuit Diagram		Totally	
Frequency		20180725		SHINI		5	
230V		3		5		Pages	
50HZ		4		6		8	

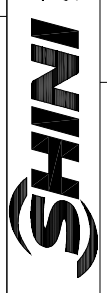
1 2 3 4 5 6 7 8

A B C



STM-1220	版本	Ver.F
STM-1220M	版本	Ver.E

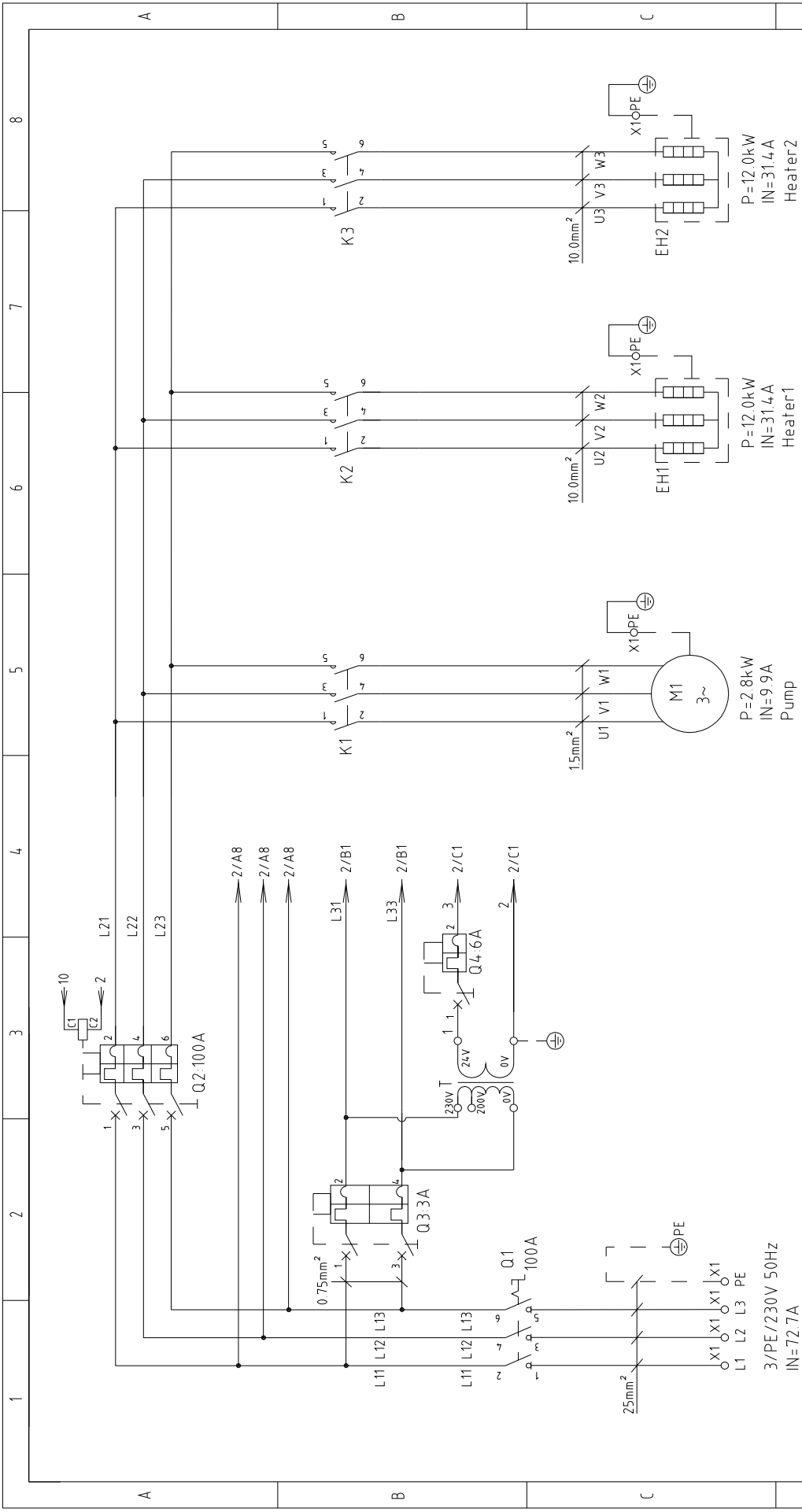
Technical requirements: (1) Pump and pipe heater should be directly connected to the output terminals of contactor and thermal overload relay.

D	Drawer		Version	G	Title	STM-1220	Drawing NO	Scale	Page	3	
	Designer		Approved by		Electrical Components Layout		STM-1220-CE-230V-G-3	Standard	CE	Totally	5
Mark	Before modification		Modified by		Date	20180725		Voltage	230V		
	After modification		Modify date					Frequency	50HZ		
 信易电热机械股份有限公司 Shini Plastics Technologies, Inc.											
1	2	3	4	5	6	7	8				

1	2		3	4	5	6	7	8
NO.	Symbol	Name	Manufacturer	Type	Specification	Number	Material number	Remark
1	Q1	Main power switch	EATON	P3-63/EA/SVB	63A	1	YE10636300000	
2	Q2	Circuit breakers	TECO	BM-63C/3063S	63A	1	YE40306303000	
3		Excitation release	CHINT	MX	24VAC	1	YE40024000000	A
4	Q3	Circuit breakers	TECO	BM-63C/2003S 2P	3A	1	YE40200203000	
5	Q4	Circuit breakers	TECO	BM-63C/1003S 1P	3A	1	YE40100203000	
6	K1	Contactors	SIEMENS	3RT16016-1AB01	24VAC	1	YE00601602500	
7	K2	Contactors	SIEMENS	3RT5035-1AC20	24VAC	1	YE00503502600	
8	T	Transformer	JIUXIN	IN=230V/200V OUT=24V	120VA	1	YE70023004500	
9	S1	Thermocouple	SHINI	----	K	1	----	(1)
10	S2 S3	Thermocouple	SHINI	----	K	2	----	(1)(2)
11	S4	Overheat protector	----	----	----	1	----	(1)
12	S5	Limit switch	RENEW	----	250V 5(4)	1	----	(1)
13	S6	Communication interface board RS-485 (double Dsub-9pin connector)	YUYUN	----	PCS	1	YE90048501200	
14		Shell RS485(SAL-700G-A-1910)	BINCHEG	----	PCS	1	YR40048500000	
15	PC1 A	Circuit board	YUYUN	TM-01 (含通讯)	180~430V 50/60Hz	1	YE81012200300	
16	X1	Terminal board	HONEYWELL	SK2 5	----	8	YE60002503200	
17		Terminal board	HONEYWELL	SK2 SPE	----	2	YE60002503400	
18		Terminal board	HONEYWELL	GK6PE	----	1	YE60000603500	
19		Terminal board	HONEYWELL	GK10	----	3	YE60001003200	C
20		Terminal board	HONEYWELL	GK10PE	----	1	YE60001003500	
21	M1	Motor	SHINI	TP-150	230V 50Hz 1.5kW	1	----	(1)
22	M1	Motor	SHINI	MP-100	230V 50Hz 1.0kW	1	----	(1)(3)
23	EH	Heater	SHINI	12kW	230V 50Hz	1	----	(1)
24	H1	Buzzer	JINGKANG	PK-35A	24VAC/DC	1	YE84003500600	
25	Y1	Solenoid valve	----	----	24VAC	1	----	(1)
STM-1220 版本 Ver.F			STM-1220M 版本 Ver.E		Notes: (1)Means it's not the material inside the control box (2)Means equipped with function of displaying water outlet and return water temperature. (3)Means equipped with magnetic pump			
			Version		Title		Drawing NO	
			G		STM-1220		STM-1220-CE-230V-G-4	
			Approved by		Electrical Components list 1			
			Date		20180725			
Mark			Before modification		Modified by		Modify date	
			Proofread by		Designer			
			Checked by		Drawer			
			Approved by		Version			
			G		Title		Drawing NO	
			G		STM-1220		STM-1220-CE-230V-G-4	
			Approved by		Electrical Components list 1			
			Date		20180725			
			Checked by		Designer			
			Proofread by		Drawer			
			Approved by		Version			
			G		Title		Drawing NO	
			G		STM-1220		STM-1220-CE-230V-G-4	
			Electrical Components list 1				Scale	
							Standard	
							CE	
							Voltage	
							230V	
							Frequency	
							50HZ	
							Page	
							4	
							Totally	
							5	
							Pages	
							8	



1		2		3		4		5		6		7		8											
NO.	Symbol	Name	Manufacturer	Type	Specification	Number	Material number	Remark																	
26		Terminal fittings E/GKseries(honeywell)	HONEYWELL	----	PCS	6	YE60000003900																		
A																									
B																									
C																									
D																									
STM-1220 版本		Ver.F		STM-1220M 版本		Ver.E		Notes: (1)Means it's not the material inside the control box (2)Means equipped with function of displaying water outlet and return water temperature. (3)Means equipped with magnetic pump																	
				Title		Version		G		Drawing NO			Scale		Page										
										STM-1220			STM-1220-CE-230V-G-5		5										
				Electrical Components List 2		Approved by		Standard								CE		Voltage		Frequency		230V		50HZ	
				Date		20180725		SHINI 信易電熱機械股份有限公司 Shini Plastics Technologies, Inc.																	
Mark				Before modification		Modified by		Modified date		Checked by		Checked date													
1				2		3		4		5		6		7		8									

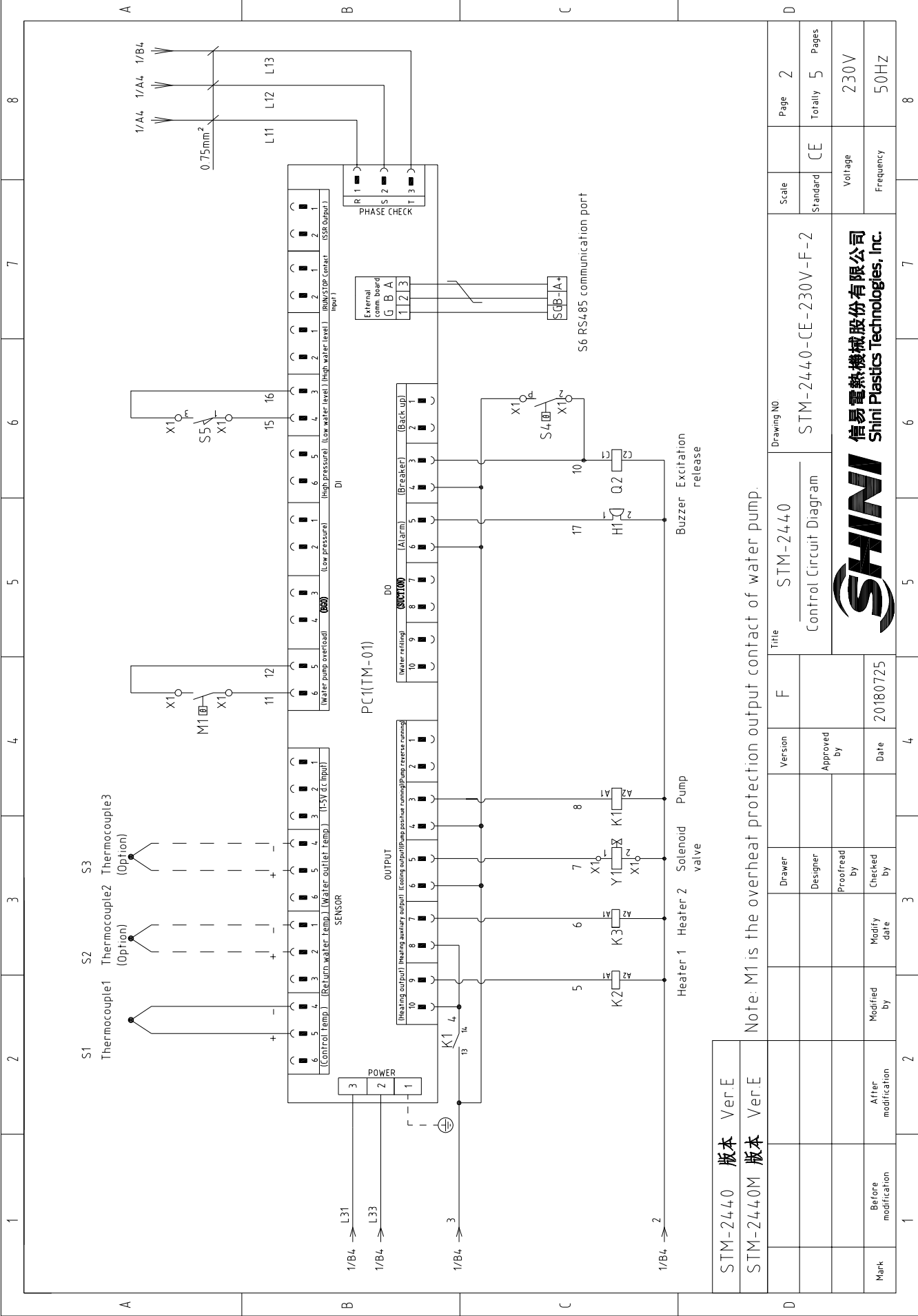


STM-2440 版本 Ver.E
 STM-2440M 版本 Ver.E

When equipped with magnetic pump P=2.8KW IN=11.3A

Title		Drawing NO		Scale		Page 1	
Version		STM-2440		Standard		Totally 5 Pages	
F		Main Circuit Diagram		CE		Voltage	
Designer		Approved by		Frequency		230V	
Proofread by		Date		Frequency		50HZ	
Checked by		20180725					
Modified by							
After modification							
Before modification							
Mark							





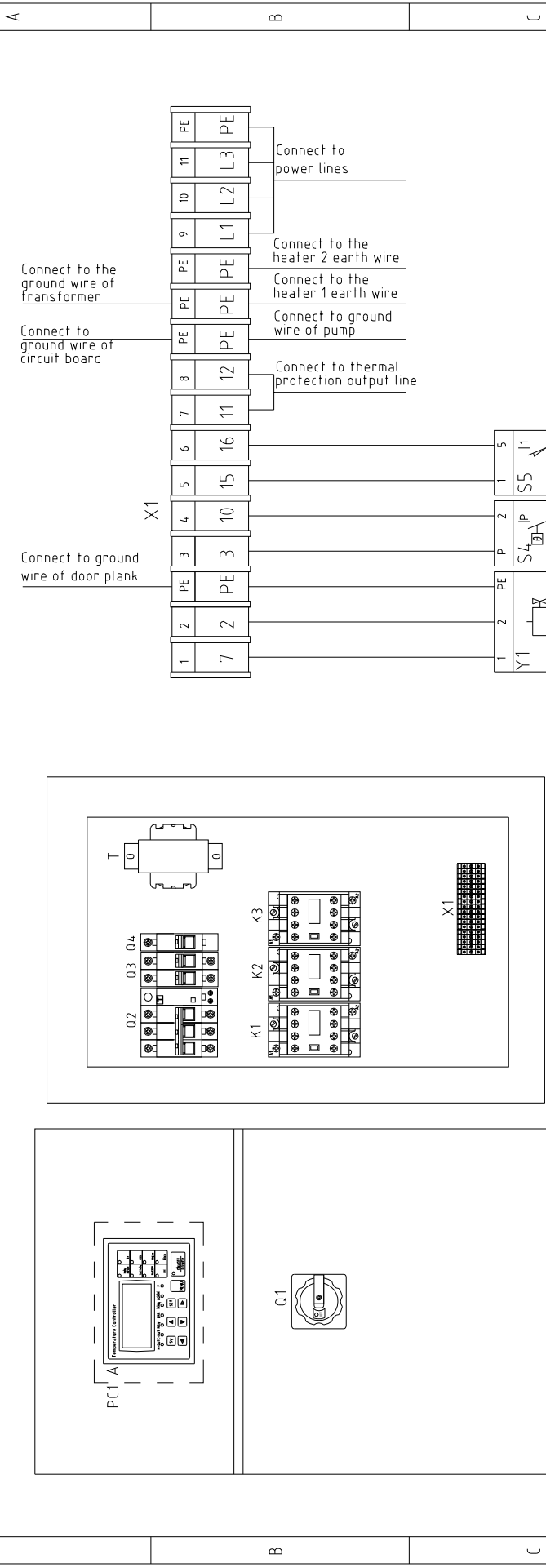
STM-2440	版本 Ver.E
STM-2440M	版本 Ver.E

Note: M1 is the overheat protection output contact of water pump.

Scale	Standard	CE	Page 2	Totally 5	Pages
Title			Drawing NO		
STM-2440			STM-2440-CE-230V-F-2		
Version			Control Circuit Diagram		
Designer			Approved by		
Proofread by			Date		
Modified by			20180725		
Checked by					
Mark			After modification		
Before modification					
Voltage			230V		
Frequency			50HZ		
Voltage			230V		
Frequency			50HZ		



1 2 3 4 5 6 7 8



Solenoid Overheat Micro valve protector switch

STM-2440 版本 Ver.E
STM-2440M 版本 Ver.E

Technical requirements: (1) Pump and pipe heater should be directly connected to the output terminals of contactor and thermal overload relay.

D	Title	STM-2440	Drawing NO	STM-2440-CE-230V-F-3	Scale	Page	3
	Electrical Components Layout		Standard	CE	Totally	5	Pages
Mark	Before modification	Modified by	Modify date	20180725	Voltage	230V	
	After modification	Checked by	Date	20180725	Frequency	50HZ	
			Version	F			
			Approved by				
			Drawer				
			Designer				
			Proofread by				
			Checked by				
			3	4		7	
			5	6		8	



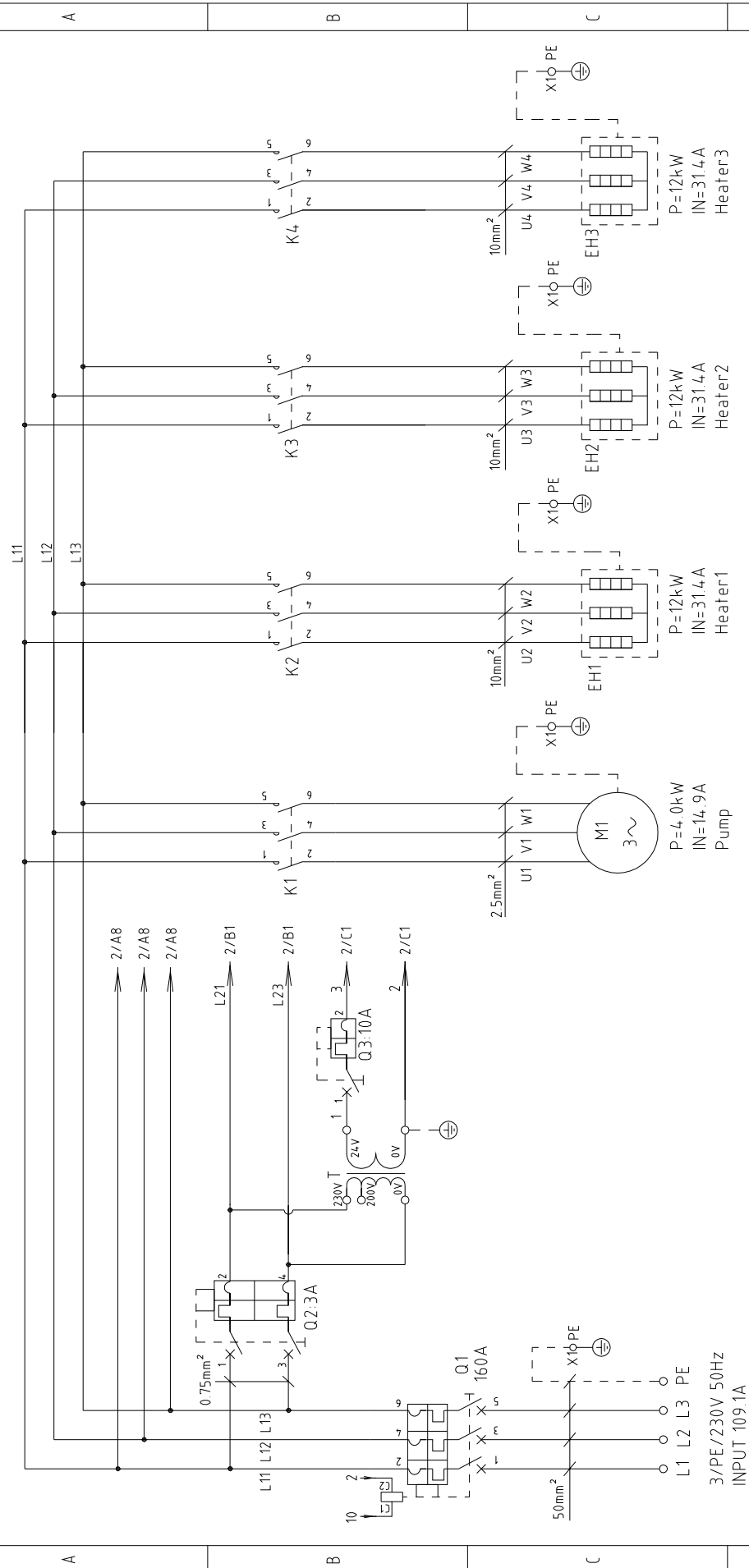
1		2		3		4		5		6		7		8	
NO.	Symbol	Name	Manufacturer	Type	Specification	Number	Material number	Remark							
1	Q1	Main power switch	EATON	P3-100/EA/SVB	100A	1	YE100100000000								
2	Q2	Circuit breakers	TECO	BM-100D/3100S	100A	1	YE40310003000								
3		Excitation release	TECO	MX	24VAC	1	YE40024000000								
4	Q3	Circuit breakers	TECO	BM-63C/2003S 2P	3A	1	YE40200203000								
5	Q4	Circuit breakers	TECO	BM-63C/1006S 1P	6A	1	YE40100600100								
6	K1	Contactors	SIEMENS	3RT6017-1AB01	24VAC	1	YE00601702500	STM-2440							
7	K1	Contactors	SIEMENS	3RT6018-1AB01	24VAC	1	YE00601802500	STM-2440M							
8	K2 K3	Contactors	SIEMENS	3RT5035-1AC20	24VAC	2	YE00503502600								
9	T	Transformer	JIUXIN	IN=230V/200V OUT=24VAC	180VA	1	YE70023005400								
10	S1	Thermocouple	SHINI	----	K	1	----	(1)							
11	S2 S3	Thermocouple	SHINI	----	K	2	----	(1)(2)							
12	S4	Overheat protector	----	----	----	1	----	(1)							
13	S5	Limit switch	RENEW	----	250V 5(4)	1	----	(1)							
14	S6	Communication interface board RS-485 (double Dsub-9pin connector)	YUYUN	----	PCS	1	YE90048501200								
15		Shell RS485(SAL-700G-A-19)0	BINGHENG	----	PCS	1	YR40048500000								
16	PC1A	Circuit board	YUYUN	TM-01 (含通讯)	180~4.30V 50/60Hz	1	YE81012200300								
17	X1	Terminal board	HONEYWELL	SK2.5	----	8	YE60002503200								
18		Terminal board	HONEYWELL	GK2.5PE	----	2	YE60002503400								
19		Terminal board	HONEYWELL	GK10PE	----	2	YE60001003500								
20		Terminal board	HONEYWELL	GK35	----	3	YE60003503200								
21		Terminal board	HONEYWELL	GK35PE	----	1	YE60003503500								
22	M1	Motor	SHINI	TP-280	230V 50Hz 2.8kW	1	----	(1)							
23	M1	Motor	SHINI	MP-280	230V 50Hz 2.8kW	1	----	(1)(3)							
24	EHT EH2	Heater	SHINI	----	230V 50Hz 12kW	2	----	(1)							
25	H1	Buzzer	JINGKANG	PK-35A	24VAC/DC	1	YE84003500600								
STM-2440 版本		Ver E	STM-2440M 版本	Ver E	Notes: (1)Means it's not the material inside the control box (2)Means equipped with function of displaying water outlet and return water temperature. (3)Means equipped with magnetic pump										
		Drawer		Version	Title		Drawing NO		Scale		Page		D		
		Designer		F	STM-2440		STM-2440-CE-230V-F-4		Standard		CE		Page 4		
		Proofread by		Approved by	Electrical Components list 1				Voltage		230V		Totally 5 Pages		
Mark		Before modification	Modified by	Date	20180725				Frequency		50HZ				



信易电热机械股份有限公司
Shini Plastics Technologies, Inc.

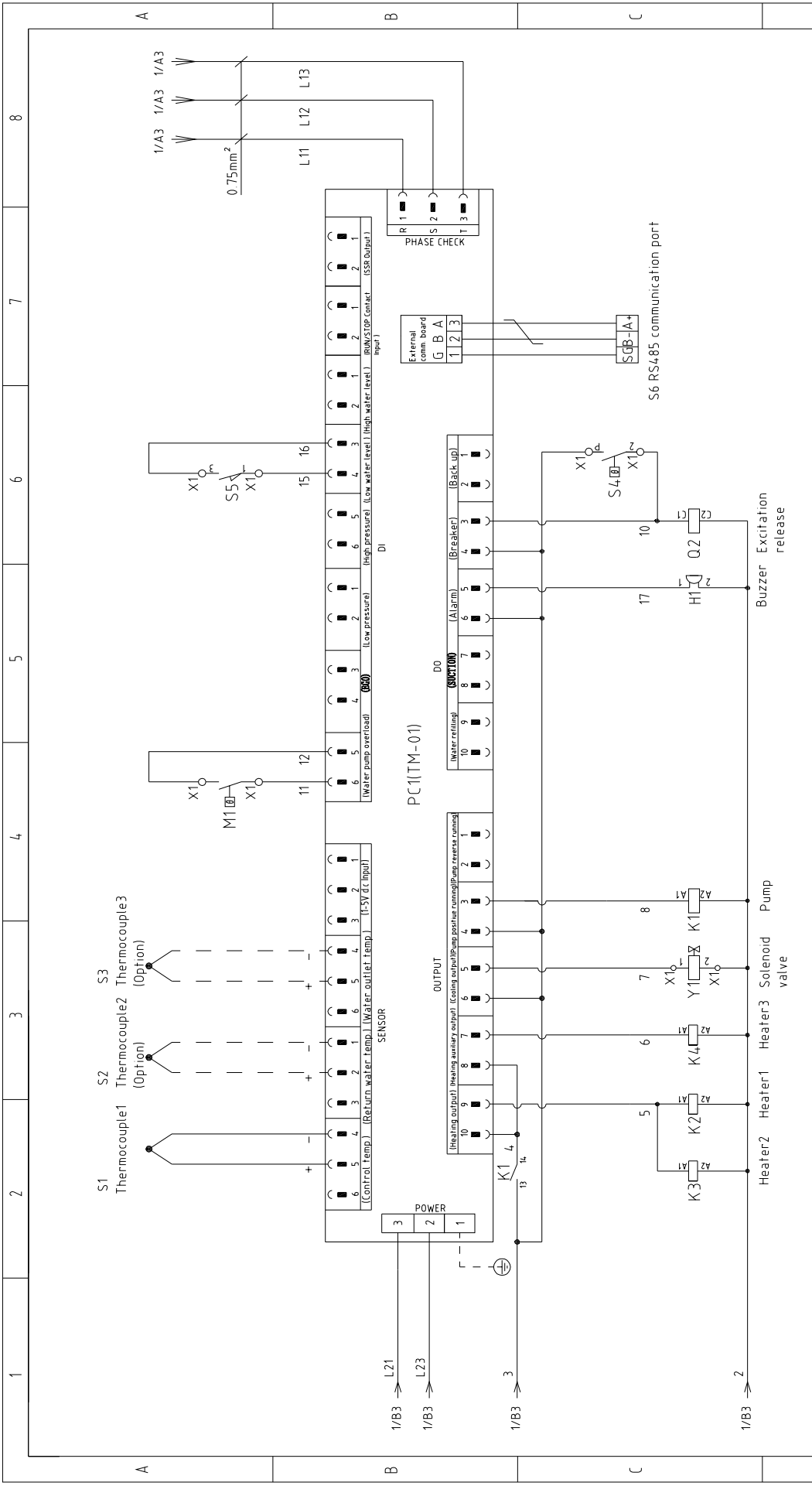
1		2		3		4		5		6		7		8	
NO.	Symbol	Name	Manufacturer	Type	Specification	Number	Material number	Remark							
26	Y1	Solenoid valve	-----	-----	24VAC 50/60Hz	1	----	(1)							
27		Terminal fittings E/GKseries(honeywell)	HONEYWELL	-----	PCS	6	YE60000003900								
A															
B															
C															
D															
STM-2440 版本		STM-2440M 版本		Ver.E		Ver.E		Notes: (1)Means it's not the material inside the control box (2)Means equipped with function of displaying water outlet and return water temperature. (3)Means equipped with magnetic pump							
		Drawer		Version		F		Title		Drawing NO		Scale		Page	
		Designer		Approved by				Electrical Components List 2		STM-2440		Standard		5	
		Proofread by		Date		20180725				STM-2440-CE-230V-F-5		CE		5	
Mark		Before modification		Modified by		Modify date						Voltage		230V	
		After modification										Frequency		50HZ	
1		2		3		4		5		6		7		8	





Mark	Before modification	Modified by	Modify date	Checked by	Date	Approved by	Version	F	Title	STM-3650	Drawing NO	STM-3650-CE-230V-F-1	Scale	Standard	CE	Totally	Pages	4	Page	1
Version	Ver.E																			
After modification																				
Frequency	50HZ																			
Voltage	230V																			

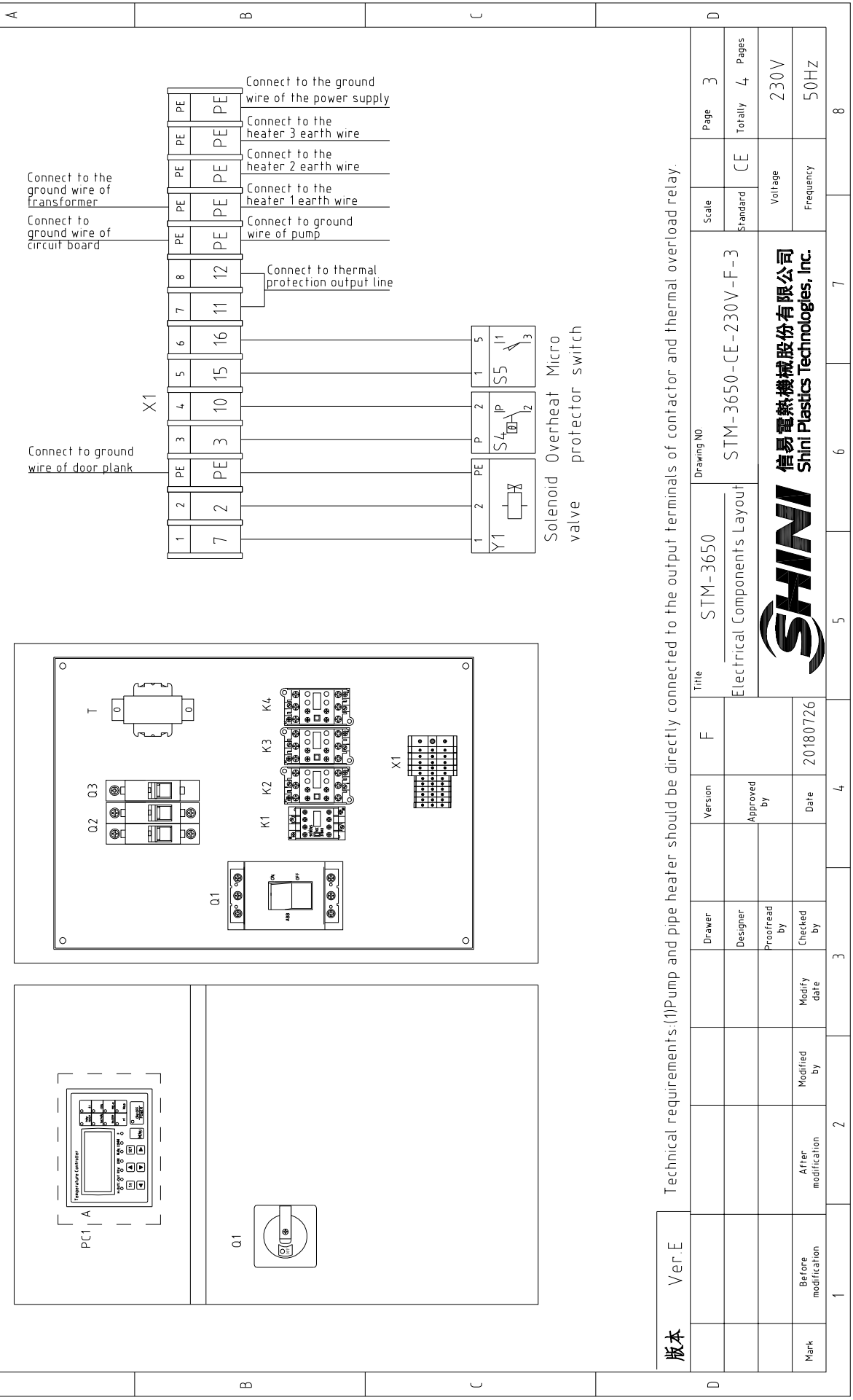




版本	Ver.E	Note: M1 is the overheat protection output contact of water pump.	
Mark	Before modification	Modified by	20180726
	After modification	Checked by	
		Proofread by	
		Designer	
		Version	F
		Title	STM-3650 Control Circuit Diagram
		Drawing NO	STM-3650-CE-230V-F-2
		Scale	Standard
		Page	2
		Totally	4
		Pages	
		Voltage	230V
		Frequency	50HZ



1 2 3 4 5 6 7 8



Technical requirements: (1) Pump and pipe heater should be directly connected to the output terminals of contactor and thermal overload relay.

Version	Ver.E	
Mark	Before modification	After modification
Modified by		
Modify date		20180726
Checked by		
Proofread by		
Designer		
Drawer		
Version		
F		
Title	STM-3650 Electrical Components Layout	
Drawing NO	STM-3650-CE-230V-F-3	
Scale	Standard	CE
Page	3	4
Totally	4	
Pages	50HZ	
Voltage	230V	
Frequency	50HZ	



1 2 3 4 5 6 7 8

1		2		3		4		5		6		7		8	
NO.	Symbol	Name	Manufacturer	Type	Specification	Number	Material number	Remark							
1	Q1	Breaker interlock	ABB	A2B250TMF160	160A	1	YE41161500000								
2		Release	ABB	SOR-C	24V-30V AC/DC	1	YE40243000900								
3	Q2	Circuit breakers	TECO	BM-63C/2003S 2P	3A	1	YE40200203000								
4	Q3	Circuit breakers	TECO	BM-63C/1010S 1P	10A	1	YE40101000100								
5	K1	Contactors	SIEMENS	3RT6025-1AC20	24VAC	1	YE00602502600								
6	K2 K3 K4	Contactors	SIEMENS	3RT5035-1AC20	24VAC	3	YE00503502600								
7	T	Transformer	JIUXIN	IN=230V/200V OUT=24VAC	230VA	1	YE700230006100								
8	S1	Thermocouple	SHINI	----	K	1	----	(1)							
9	S2 S3	Thermocouple	SHINI	----	K	2	----	(2)							
10	S4	Overheat protector	----	----	----	1	----	(1)							
11	S5	Limit Switch	RENEW	----	250V 5(4)	1	----	(1)							
12	S6	Communication interface board RS-485 (double Dsub-9pin connector)	YUYUN	----	PCS	1	YE90048501200								
13		Shell RS485(SAL-700G-A-19)0	BINCHEG	----	PCS	1	YR40048500000								
14	PC1A	Circuit Board	YUYUN	TM-01 (含通讯)	180~4.30V 50/60Hz	1	YE81012200300								
15	X1	Terminal board	HONEYWELL	SK2.5	----	8	YE60002503200								
16		Terminal board	HONEYWELL	GK2.5PE	----	2	YE60002503400								
17		Terminal board	HONEYWELL	GK10PE	----	3	YE60001003500								
18		Terminal board	HONEYWELL	GK35PE	----	1	YE60003503500								
19	M1	Motor	SHINI	----	230V 50Hz 4.0kW	1	----	(1)							
20	EH1 EH2 EH3	Heater	SHINI	----	230V 50Hz 12kW	3	----	(1)							
21	H1	Buzzer	JINGKANG	PK-35A	24VAC/DC	1	YE84003500600								
22	Y1	Solenoid valve	----	----	24VAC	1	----	(1)							
23		Terminal fittings E/GKseries(honeywell)	HONEYWELL	----	PCS	6	YE60000003900								
版本 Ver.E Notes: (1)Means it's not the material inside the control box (2)Means equipped with function of displaying water outlet and return water temperature															
D		Title		Drawing NO		Scale		Page		Page		Page		Page	
		STM-3650		STM-3650-CE-230V-F-4		Standard		CE		Voltage		230V		50HZ	
		Electrical Components List								Frequency					
Mark		Before modification		Modified by		Modify date		Date		20180726					
1		2		3		4		5		6		7		8	

