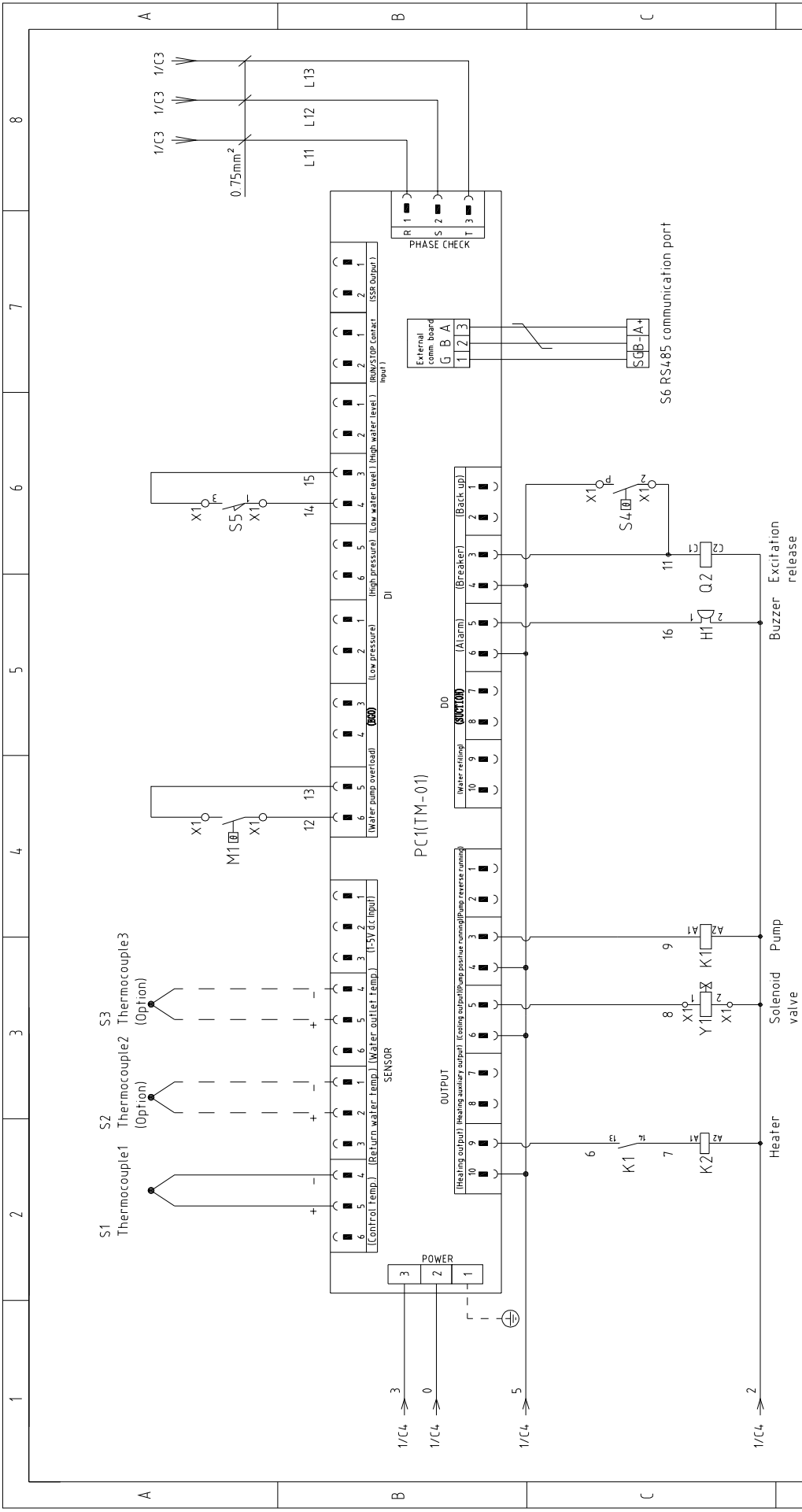


STM-607 版本 Ver.H  
 STM-607M 版本 Ver.F

When equipped with magnetic pump P=0.55KW IN=1.0A

Title		Drawing NO		Scale		Page 1	
STM-607		STM-607		Standard		CE	
Main Circuit Diagram		STM-607-CE-4.00V-K-1		Voltage		4.00V	
Version		K		Frequency		50Hz	
Approved by		20180723		Totally		4 Pages	
Date		20180723		Voltage		4.00V	
Modified by		20180723		Frequency		50Hz	
Checked by		20180723		Voltage		4.00V	
Modified date		20180723		Frequency		50Hz	
Checked by		20180723		Voltage		4.00V	
Modified date		20180723		Frequency		50Hz	
Checked by		20180723		Voltage		4.00V	
Modified date		20180723		Frequency		50Hz	



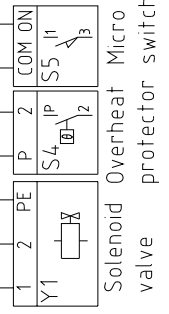
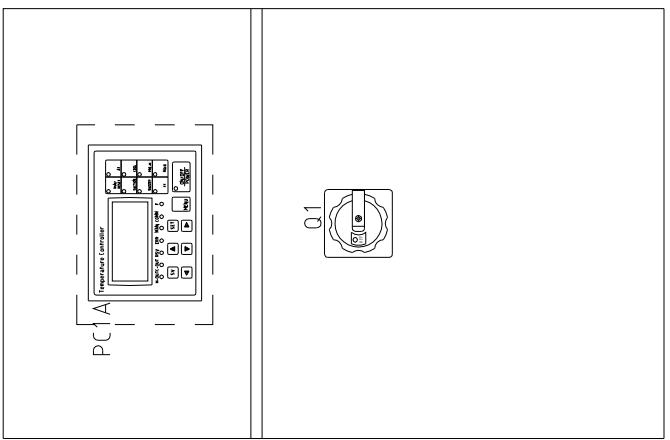
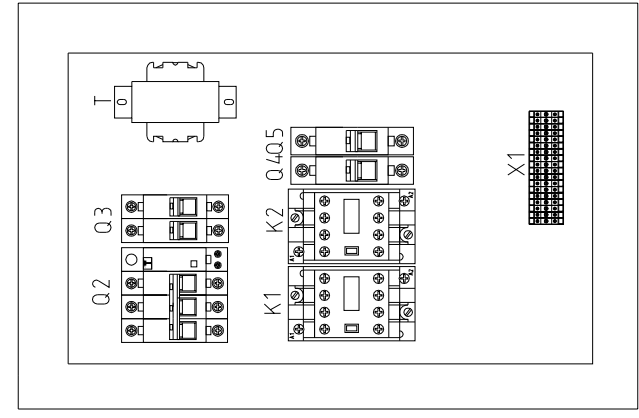
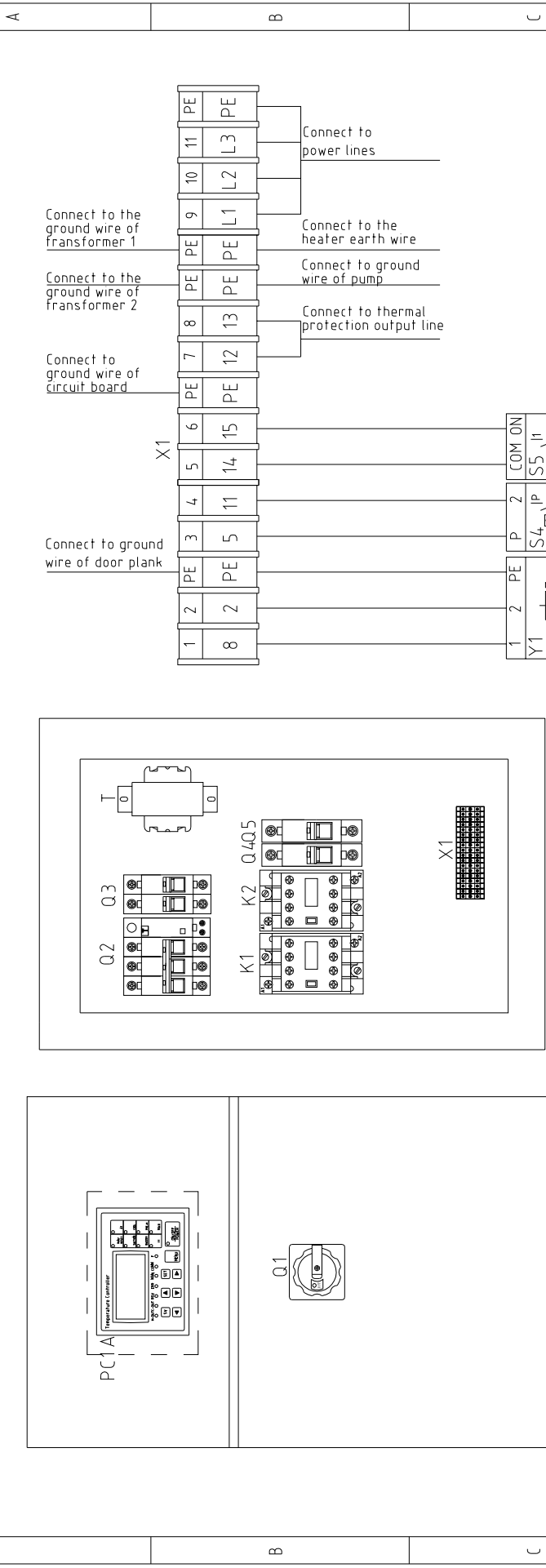


STM-607 版本 Ver.H  
 STM-607M 版本 Ver.F

Note: M1 is the overheat protection output contact of water pump.

Title		Drawing NO	
STM-607		STM-607-CE-400V-K-2	
Version		Scale	
K		Standard	
Approved by		Voltage	
Date		Frequency	
20180723		400V	
Modified by		Frequency	
Modify date		50HZ	
Mark		Page	
Before modification		2	
After modification		4	
Modified by		Totally	
Checked by		4	
Proofread by		Pages	
Designer		4	
Drawer		2	





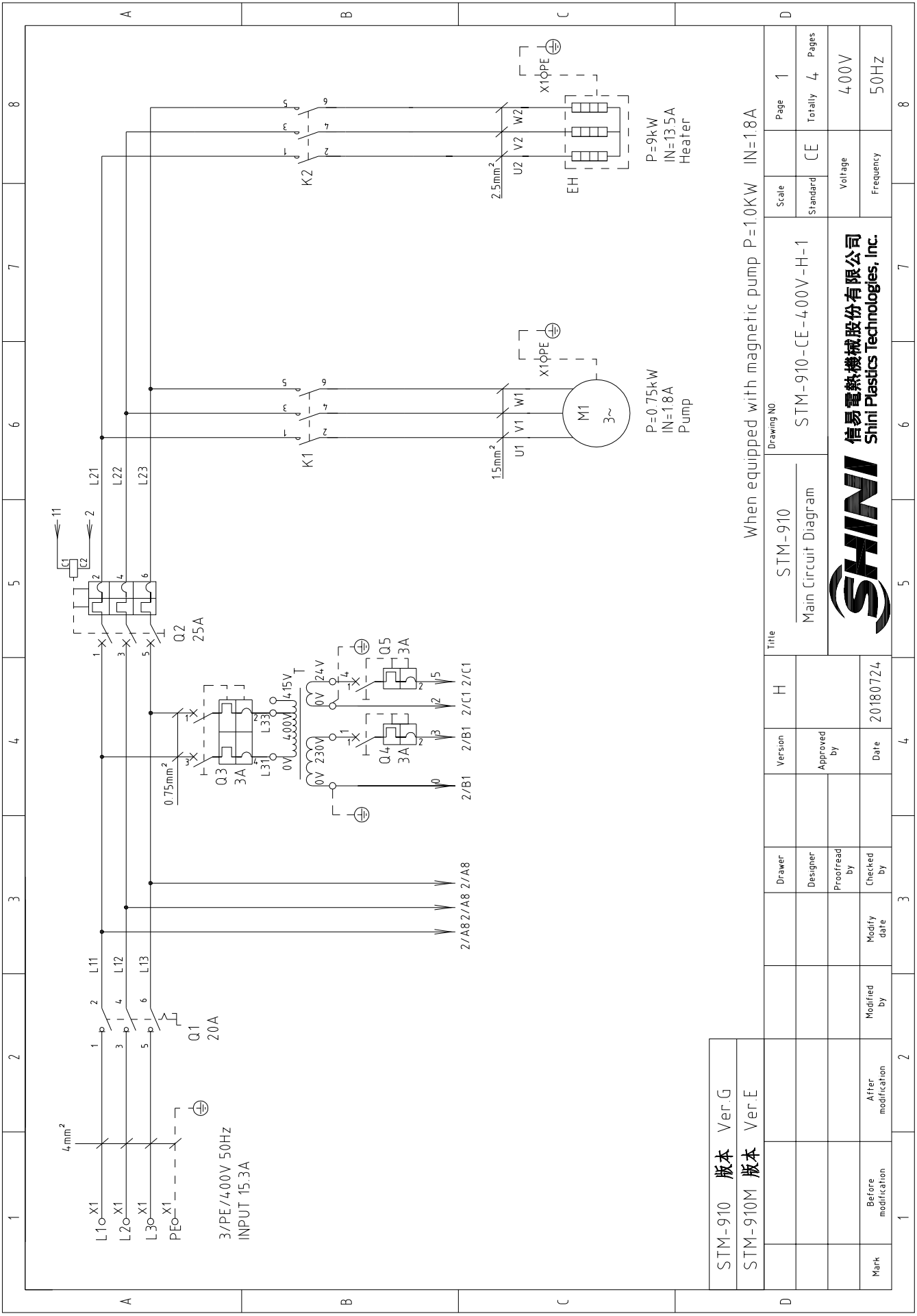
STM-607 版本 Ver.H
STM-607M 版本 Ver.F

Technical requirements: (1) Pump and pipe heater should be directly connected to the output terminals of contactor and thermal overload relay.

D	Drawing NO	STM-607	Scale	Page 3
	Electrical Components Layout	STM-607-CE-400V-K-3	Standard CE	Totally 4 Pages
Mark	Before modification	20180723	Voltage	400V
	After modification		Frequency	50HZ
1	2	3	4	8



1		2		3		4		5		6		7		8									
NO.	Symbol	Name	Manufacturer	Type	Specification	Number	Material number	Remark															
1	Q1	Main power switch	EATON	TO-2-1/EA/SVB	20A	1	YE10021160000																
2	Q2	Circuit breakers	TECO	BM-63C/3016S	16A	1	YE40301603000																
3	Q3	Excitation release	TECO	MX	24VAC	1	YE40024000000	A															
4	Q4 Q5	Circuit breakers	TECO	BM-63C/2003S 2P	3A	1	YE40200203000																
5	Q4 Q5	Circuit breakers	TECO	BM-63C/1003S 1P	3A	2	YE40100203000																
6	K1	Contactors	SIEMENS	3RT6015-1AB01	24VAC	1	YE00601502500																
7	K2	Contactors	SIEMENS	3RT6018-1AB01	24VAC	1	YE00601802500																
8	T	Transformer	JIUXIN	IN=400V/415V OUT=24V/230V 80VA/350mA		1	YE7004.0007200																
9	S1	Thermocouple	SHINI	----	K	1	----	(1)															
10	S2 S3	Thermocouple	SHINI	----	K	2	----	(1)(2)															
11	S4	Overheat protector	----	----	----	1	----	(1)															
12	S5	Limit switch	RENEW	----	250V 5(4)	1	----	(1)															
13	S6	Communication interface board RS-485 (double Dsub-9pin connector)	YUYUN	----	PCS	1	YE9004.8501200																
14		Shell RS485(SAL-700G-A-19)0	BINCHEG	----	PCS	1	YR4004.8500000																
15	PC1 A	Circuit board	YUYUN	TM-01 (含通讯)	180~430V 50/60Hz	1	YE81012200300																
16	X1	Terminal board	HONEYWELL	SK2 5	----	11	YE60002503200																
17		Terminal board	HONEYWELL	SK2 5PE	----	5	YE60002503400																
18	M1	Motor	SHINI	TP-55	400V 50Hz 0.55kW	1	----	(1)															
19	M1	Motor	SHINI	MP-55	400V 50Hz 0.55kW	1	----	(1)(3)															
20	EH	Heater	SHINI	----	400V 50Hz 6kW	1	----	(1)															
21	H1	Buzzer	JINGKANG	PK-35A	24VAC/DC	1	YE84003500600																
22	Y1	Solenoid valve	----	----	24VAC	1	----	(1)															
23		Terminal fittings E/GKseries(honeywell)	HONEYWELL	----	PCS	6	YE60000003900																
Notes: (1)Means it's not the material inside the control box (2)Means equipped with function of displaying water outlet and return water temperature (3)Means equipped with magnetic pump																							
STM-607 版本 Ver.H				STM-607M 版本 Ver.F				Title STM-607				Drawing NO STM-607-CE-400V-K-4			Page 4								
Designer				Approved by				Electrical Components List				Standard CE		Totally 4 Pages									
Proofread by				Date 20180723				SHINI 信易电热机械股份有限公司 Shini Plastics Technologies, Inc.				Voltage 400V		Frequency 50HZ									
Modified by				Modify date								Frequency		50HZ									
Mark Before modification				1				2				3		4		5		6		7		8	

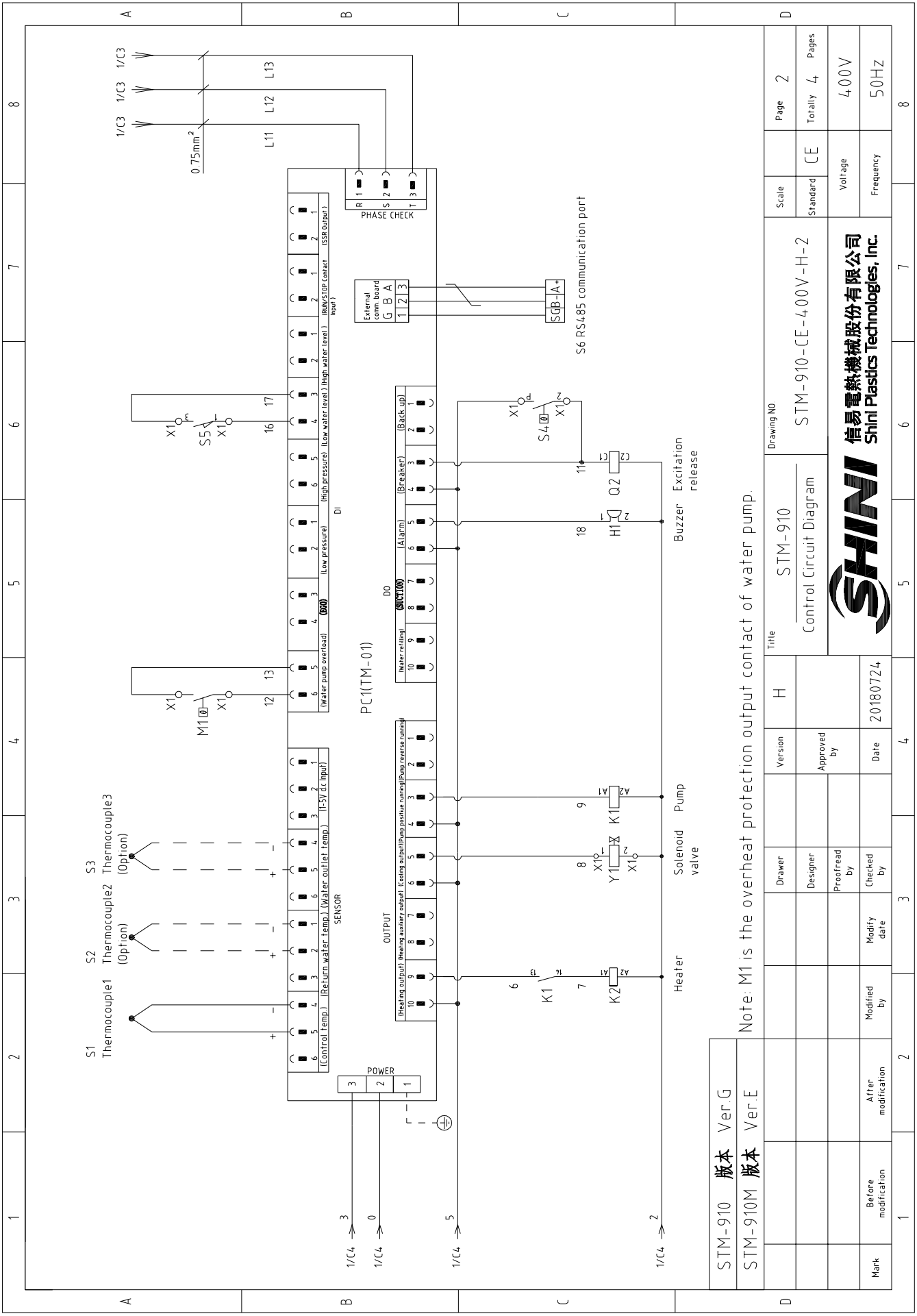


STM-910	版本	Ver.G
STM-910M	版本	Ver.E

When equipped with magnetic pump P=1.0KW IN=1.8A

Title		Drawing NO	
STM-910		STM-910-CE-400V-H-1	
Main Circuit Diagram		Standard	CE
Scale	Page	Voltage	Frequency
	1	400V	50Hz
Totally		Pages	
4		4	
Mark	Before modification	After modification	Modify date
			20180724
Designer	Proofread by	Checked by	Date
			20180724
2/A8 2/A8 2/A8	2/B1 2/B1 2/C1 2/C1	2/B1 2/B1 2/C1 2/C1	





STM-910 版本 Ver.G  
 STM-910M 版本 Ver.E

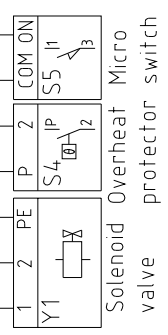
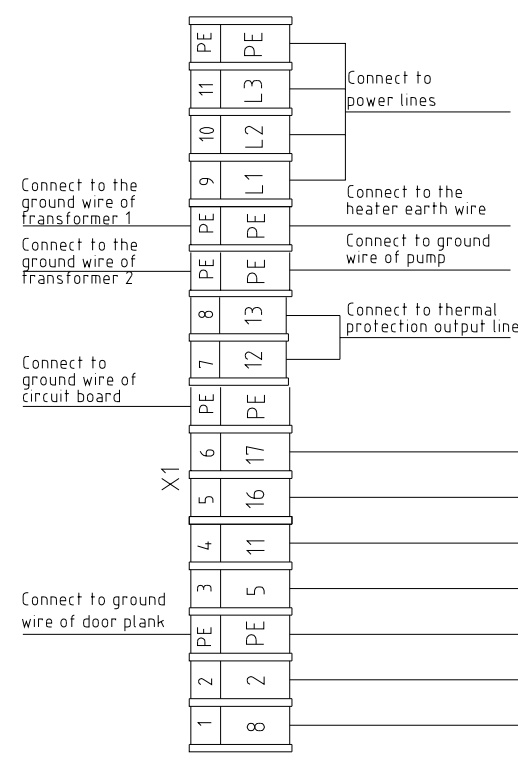
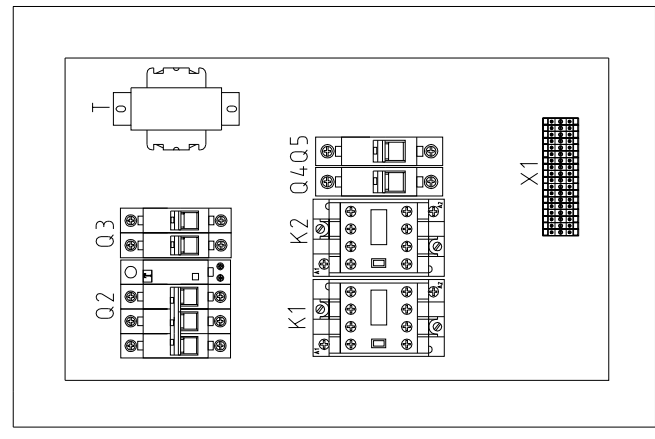
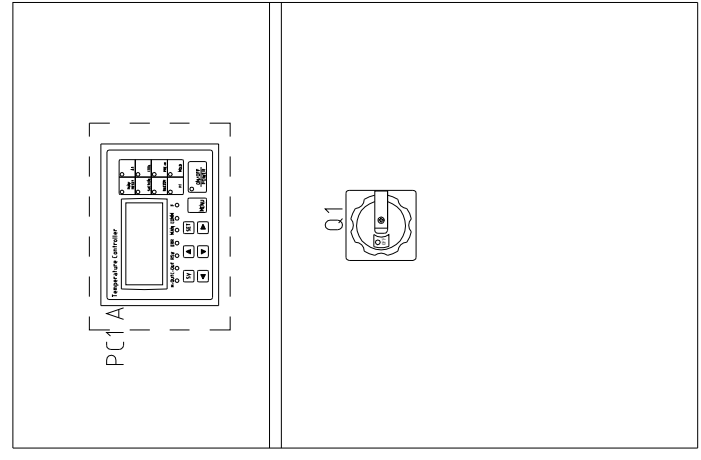
Note: M1 is the overheat protection output contact of water pump.

Title		Drawing No	
STM-910		STM-910-CE-400V-H-2	
Version		Scale	
H		Standard	
Designer		CE	
Proofread by		Voltage	
Approved by		400V	
Date		Frequency	
20180724		50HZ	
Modified by		Page	
Modify date		2	
After modification		Totally	
Mark		4	
Before modification		Pages	
1		8	



1 2 3 4 5 6 7 8

A B C



STM-910	版本	Ver.G
STM-910M	版本	Ver.E

Technical requirements: (1) Pump and pipe heater should be directly connected to the output terminals of contactor and thermal overload relay.

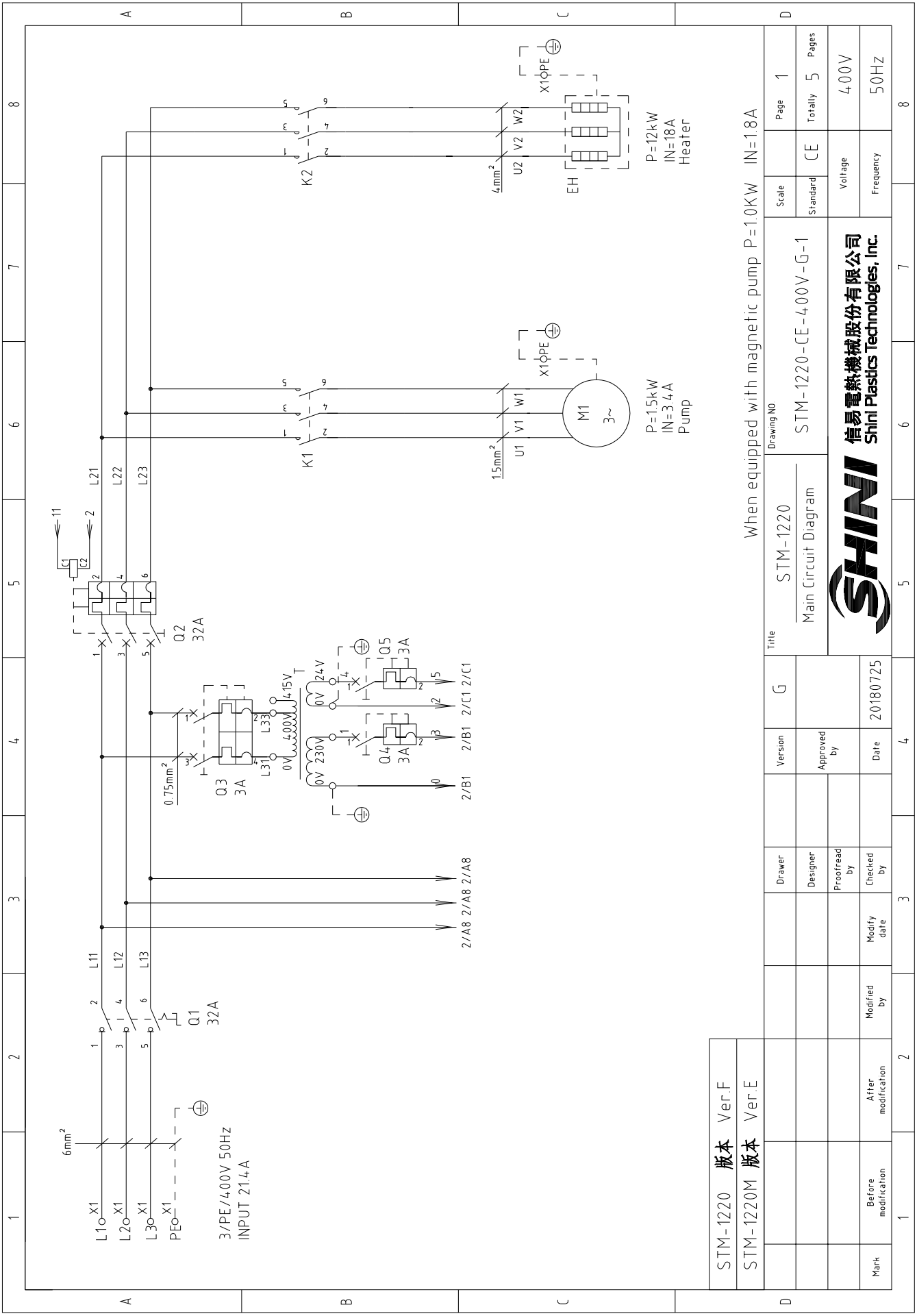
D	Drawer	H	Title		Scale	Page
	Designer	Version	STM-910	Electrical Components Layout	Standard	3
	Proofread by	Approved by	Drawing NO			Totally
	Checked by	Date	STM-910-CE-400V-H-3		CE	4
Mark	Modified by	Modify date			Voltage	Pages
	Before modification	20180724			400V	4
	After modification				Frequency	50HZ
						8



1		2		3		4		5		6		7		8					
NO.	Symbol	Name	Manufacturer	Type	Specification	Number	Material number	Remark											
1	Q1	Main power switch	EATON	P1-25/EA/SVB	20A	1	YE10021160000												
2	Q2	Circuit Breakers	TECO	BM-63C/3025S	25A	1	YE40302503000												
3		Excitation release	CHINT	MX	24VAC	1	YE40024000000												
4	Q3	Circuit breakers	TECO	BM-63C/2003S 2P	3A	1	YE40200203000												
5	Q4 Q5	Circuit breakers	TECO	BM-63C/1003S 1P	3A	2	YE40100203000												
6	K1	Contactors	SIEMENS	3RT6015-1AB01	24VAC	1	YE00601502500												
7	K2	Contactors	SIEMENS	3RT6025-1AC20	24VAC	1	YE00602502600												
8	T	Transformer	JIUXIN	IN=400V/415V OUT=24V/230V	80VA/350mA	1	YE700400007200												
9	S1	Thermocouple	SHINI	----	K	1	----	(1)											
10	S2 S3	Thermocouple	SHINI	----	K	2	----	(1)(2)											
11	S4	Overheat protector	----	----	----	1	----	(1)											
12	S5	Limit switch	RENEW	----	250V 5(4)	1	----	(1)											
13	S6	Communication interface board RS-485 (double Dsub-9pin connector)	YUYUN	----	PCS	1	YE90048501200												
14		Shell RS485(SAL-700G-A-19)0	BINCHEG	----	PCS	1	YR40048500000												
15	PC1 A	Circuit board	YUYUN	TM-01 (含通讯)	180~430V 50/60Hz	1	YE81012200300												
16	X1	Terminal board	HONEYWELL	SK2 5	----	8	YE60002503200												
17		Terminal board	HONEYWELL	SK2 SPE	----	4	YE60002503400												
18		Terminal board	HONEYWELL	SK4	----	3	YE60000403200												
19		Terminal board	HONEYWELL	SK4PE	----	1	YE60000403500												
20	M1	Motor	SHINI	TP-75	400V 50Hz 0.75kW	1	----	(1)											
21	M1	Motor	SHINI	MP-100	400V 50Hz 1.0kW	1	----	(1)(3)											
22	EH	Heater	SHINI	----	400V 50Hz 9kW	1	----	(1)											
23	H1	Buzzer	JINGKANG	PK-35A	24VAC/DC	1	YE84003500600												
24	Y1	Solenoid valve	----	----	24VAC	1	----	(1)											
25		Terminal fittings E/GKseries(honeywell)	HONEYWELL	----	PCS	6	YE60000003900												
STM-910 版本		Ver.G	STM-910M 版本	Ver.E	Notes: (1)Means it's not the material inside the control box (2)Means equipped with function of displaying water outlet and return water temperature. (3)Means equipped with magnetic pump														
				Drawer		Title		STM-910		Drawing NO		STM-910-CE-400V-H-4		Scale	Page		4		
				Designer		Electrical Components List						Standard		CE		Totally		4	
				Proofread by										Voltage		400V			
				Checked by										Frequency		50HZ			
Mark	Before modification	Modified by	Modify date	Date	20180724														
1		2	3	4	5	6	7	8											




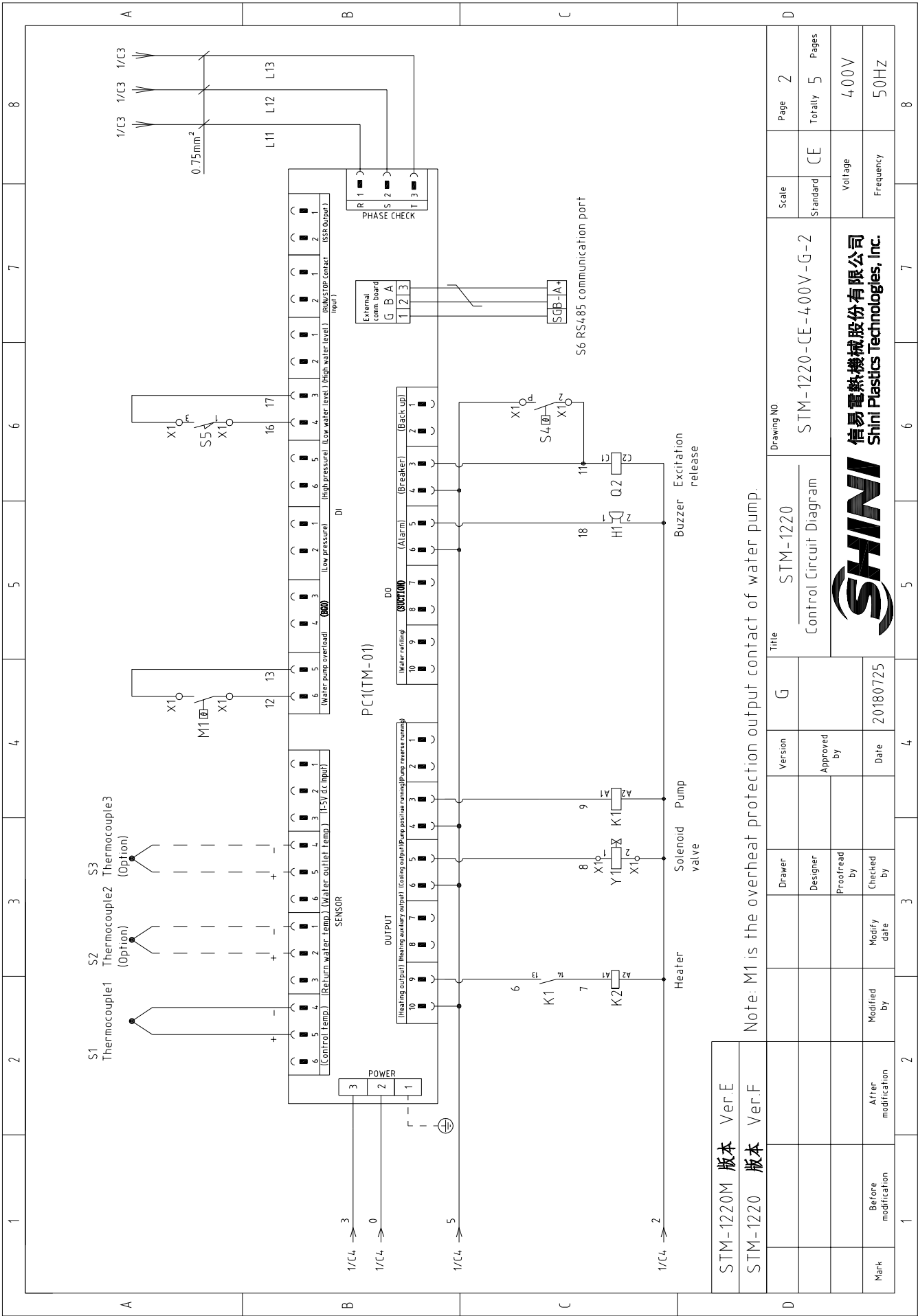




STM-1220	版本	Ver.F
STM-1220M	版本	Ver.E

When equipped with magnetic pump P=1.0KW IN=1.8A

D	Title	STM-1220	Drawing NO	Page	1		
		Main Circuit Diagram		Standard	CE	Totally	5
Mark	Before modification	Modified by	Modify date	Voltage	400V		
	After modification	Modified by	Modify date		Frequency	50Hz	
 <b>信易電熱機械股份有限公司</b> <b>Shini Plastics Technologies, Inc.</b>					Scale	Standard	CE
					Page	1	
					Totally	5	Pages



STM-1220M 版本 Ver.E

STM-1220 版本 Ver.F

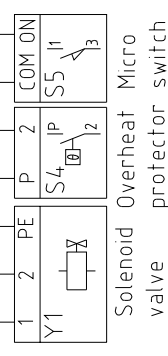
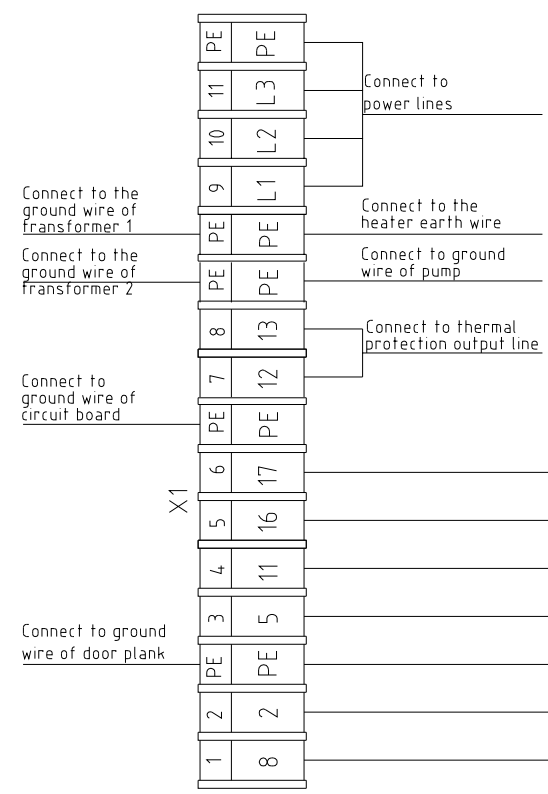
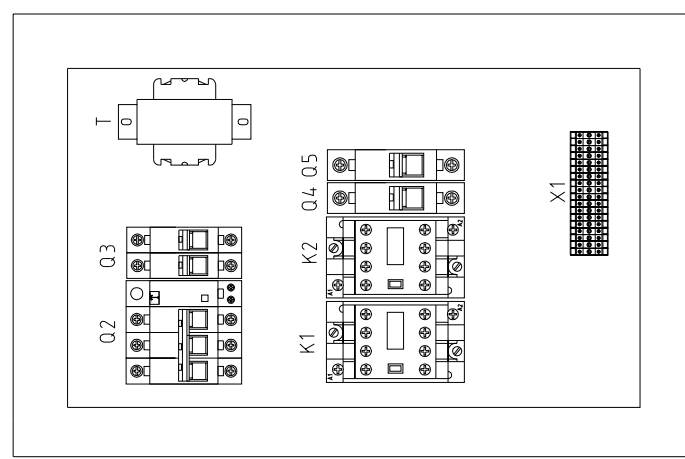
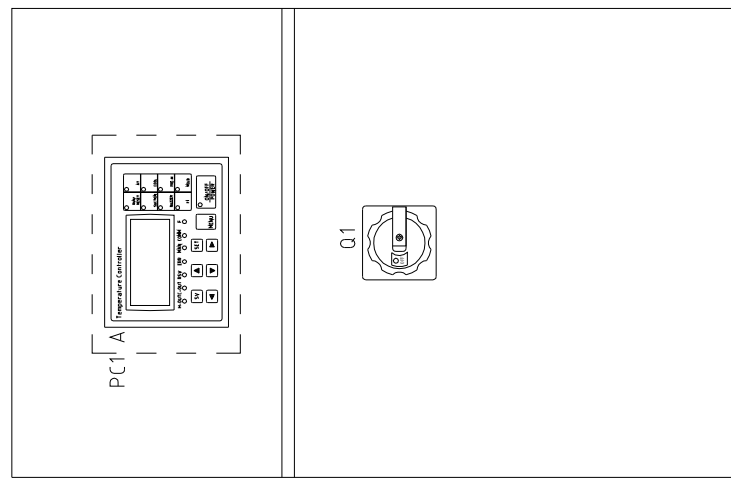
Note: M1 is the overheat protection output contact of water pump.

D		Drawing NO		Page	
		STM-1220		2	
		Control Circuit Diagram		5	
		STM-1220-CE-400V-G-2		Pages	
		Voltage		400V	
		Frequency		50HZ	
		Standard		CE	
		Scale		Voltage	
		Frequency		50HZ	
		Title		8	
		Version		6	
		Approved by		7	
		Date		20180725	
		Modified by		4	
		Modify date		3	
		Checked by		2	
		Proofread by		1	
		Designer			
		Drawer			



1 2 3 4 5 6 7 8

A B C



STM-1220 版本 Ver.F  
STM-1220M 版本 Ver.E

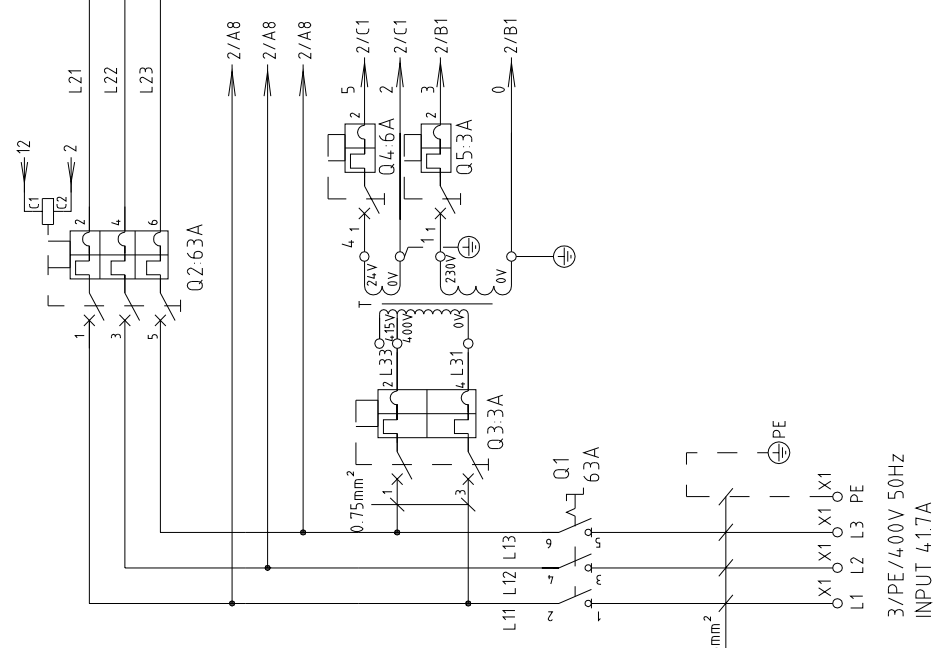
Technical requirements (1) Pump and pipe heater should be directly connected to the output terminals of contactor and thermal overload relay.

Mark	Before modification	After modification	Modified by	Modify date	Checked by	Date	20180725
			Proofread by		Approved by		
			Designer				
			Drawer				
			Version				
			G				
			Title		STM-1220		
			Drawing NO		STM-1220-CE-400V-G-3		
			Scale		Standard	CE	Page 3
							Totally 5 Pages
						Voltage	400V
						Frequency	50HZ
							8



1		2		3		4		5		6		7		8	
NO.	Symbol	Name	Manufacturer	Type	Specification	Number	Material number	Remark							
1	Q1	Main power switch	EATON	P1-32/EA/SVB	32A	1	YE10323200000								
2	Q2	Circuit breakers	TECO	BM-63C/3032S	32A	1	YE40303203000								
3	Q3	Excitation release	CHINT	MX	24VAC	1	YE40024000000								
4	Q4 Q5	Circuit breakers	TECO	BM-63C/2003S 2P	3A	1	YE40200203000								
5	Q4 Q5	Circuit breakers	TECO	BM-63C/1003S 1P	3A	2	YE40100203000								
6	K1	Contactors	SIEMENS	3RT6015-1AB01	24VAC	1	YE00601502500								
7	K2	Contactors	SIEMENS	3RT6026-1AC20	24VAC	1	YE00602602600								
8	T	Transformer	JIUXIN	IN=400V/415V OUT=24V/230V	80VA/350mA	1	YE7004.0007200								
9	S1	Thermocouple	SHINI	----	K	1	----	(1)							
10	S2 S3	Thermocouple	SHINI	----	K	2	----	(1)(2)							
11	S4	Overheat protector	----	----	----	1	----	(1)							
12	S5	Limit Switch	RENEW	----	250V 5(4)	1	----	(1)							
13	S6	Communication interface board RS-485 (double Dsub-9pin connector)	YUYUN	----	PCS	1	YE9004.8501200								
14		Shell RS485(SAL-700G-A-19)0	BINCHEG	----	PCS	1	YR4004.8500000								
15	PC1 A	Circuit board	YUYUN	TM-01 (含通讯)	180~430V 50/60Hz	1	YE81012200300								
16	X1	Terminal board	HONEYWELL	SK2 5	----	8	YE60002503200								
17		Terminal board	HONEYWELL	GK2 SPE	----	3	YE60002503400								
18		Terminal board	HONEYWELL	GK5PE	----	1	YE60000403500								
19		Terminal board	HONEYWELL	GK6	----	3	YE60000603200								
20		Terminal board	HONEYWELL	GK6PE	----	1	YE60000603500								
21	M1	Motor	SHINI	TP-150	4.00V 50Hz 1.5kW	1	----	(1)							
22	M1	Motor	SHINI	MP-100	4.00V 50Hz 1.0kW	1	----	(1)(3)							
23	EH	Heater	SHINI	12kW	4.00V 50Hz	1	----	(1)							
24	H1	Buzzer	JINGKANG	PK-35A	24VAC/DC	1	YE84.003500600								
25	Y1	Solenoid valve	----	----	24VAC	1	----	(1)							
STM-1220 版本		Ver.F	STM-1220M 版本	Ver.E	Notes: (1)Means it's not the material inside the control box (2)Means equipped with function of displaying water outlet and return water temperature. (3)Means equipped with magnetic pump										
		Drawer		Designer	Title STM-1220										
		Proofread by		Approved by	Drawing NO STM-1220										
		Checked by		Date	Electrical Components list 1										
		Modified by		Modify date	Scale Standard CE										
		After modification			STM-1220-CE-400V-G-4										
		Before modification			Voltage 400V										
					Frequency 50HZ										
					Page 4										
					Totally 5 Pages										
Mark					SHINI 信易电热机械股份有限公司 Shini Plastics Technologies, Inc.										
1		2		3		4		5		6		7		8	



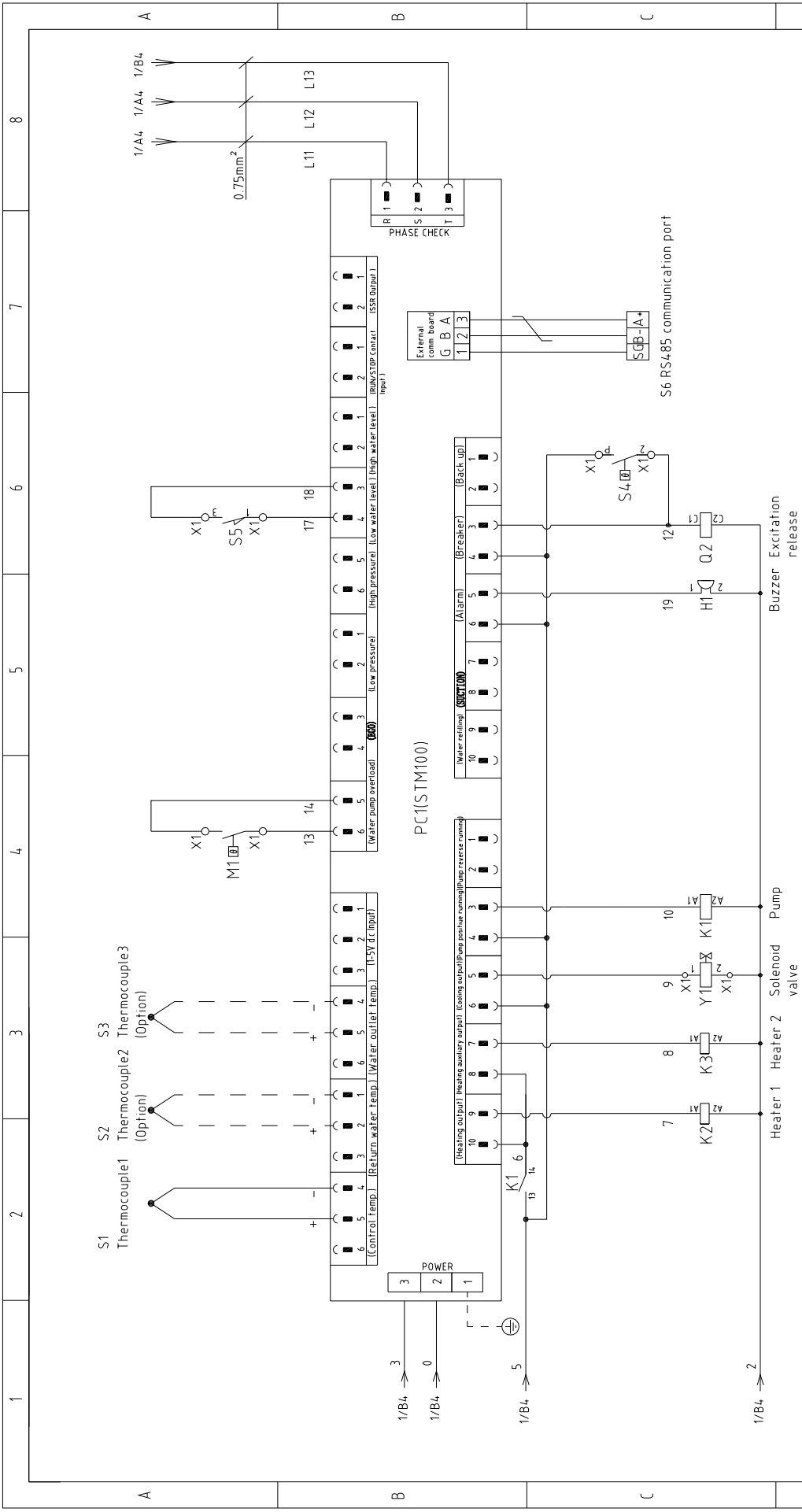


STM-2440 版本 Ver.E  
 STM-2440M 版本 Ver.E

When equipped with magnetic pump P=2.8KW IN=6.5A

D	Version	G	Title	Drawing NO		Scale	Page	1
	Designer	Approved by	Main Circuit Diagram		STM-2440-CE-4.00V-G-1	Standard	Totally	5 Pages
Mark	Before modification	Modified by	Date	20180725		Voltage	400V	
	After modification	Checked by	Modify date			Frequency	50HZ	



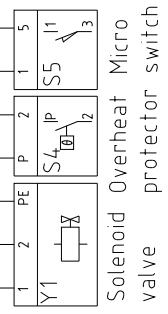
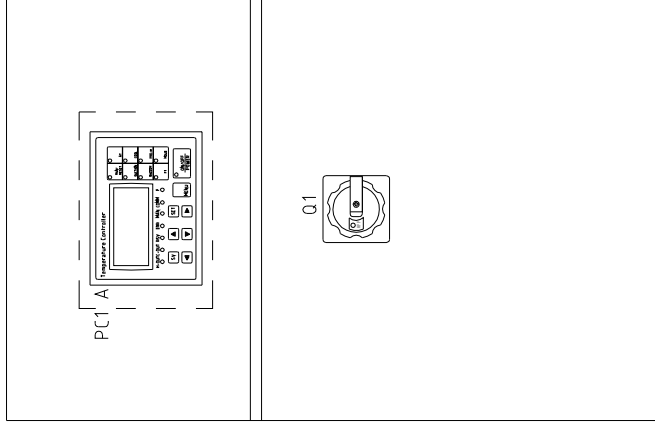
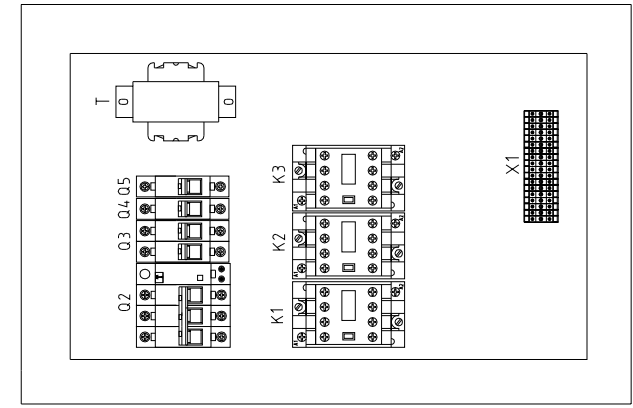
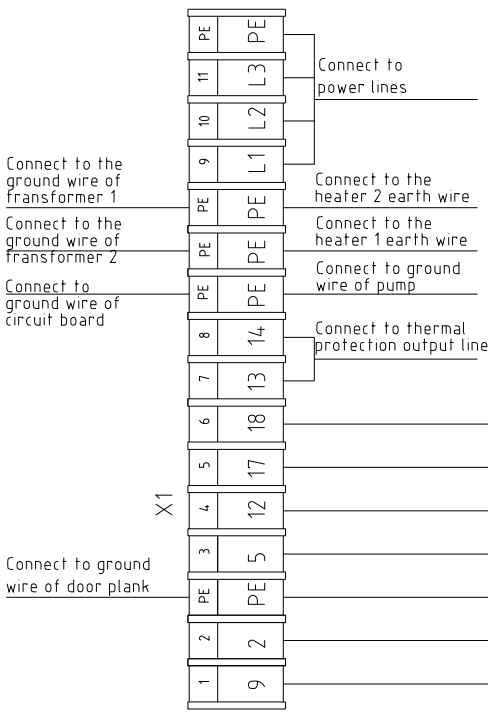


STM-2440	版本	Ver.E
STM-2440M	版本	Ver.E
Mark	Before modification	
	After modification	
	Modified by	
	Modify date	
	Checked by	
	Proofread by	
	Designer	
	Drawer	

Note: M1 is the overheat protection output contact of water pump.


Title		STM-2440		Drawing NO		STM-2440-CE-400V-G-2	
Version		G		Scale		Standard	
Approved by				Voltage		400V	
Date		20180725		Frequency		50HZ	
Modified by				Standard		CE	
Modify date				Page		2	
Checked by				Totally		5	
Proofread by				Pages		400V	
Designer				Frequency		50HZ	
Drawer				Voltage		400V	
Version				Frequency		50HZ	
Approved by				Standard		CE	
Date		20180725		Page		2	
Modify date				Totally		5	
Checked by				Pages		400V	
Proofread by				Frequency		50HZ	
Designer				Voltage		400V	
Drawer				Frequency		50HZ	





STM-2440 版本 Ver.E  
STM-2440M 版本 Ver.E


Technical requirements (1)Pump and pipe heater should be directly connected to the output terminals of contactor and thermal overload relay.

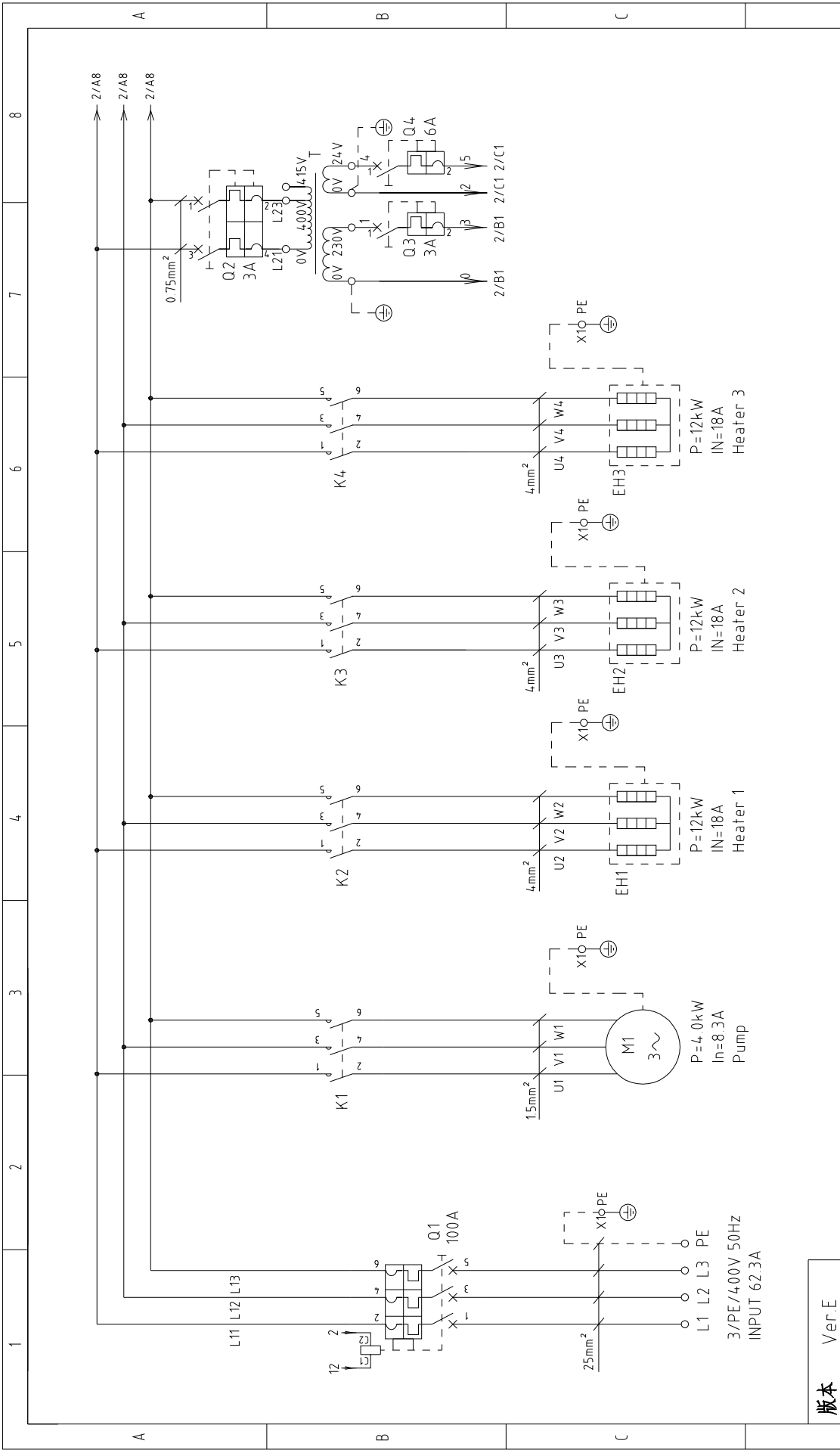
Drawn	Version	G	Title	STM-2440	Drawing NO	Scale	Page	3
Designer	Approved by		Electrical Components Layout			Standard	Totally	5
Proofread by	Date	20180725	STM-2440-CE-4.00V-G-3			Voltage	Frequency	400V 50HZ
Checked by	Modified by		 信易電熱機械股份有限公司 Shini Plastics Technologies, Inc.					
Modified date	Before modification		5	6	7			
1	2	3	4	5	6	7	8	



1		2		3		4		5		6		7		8		
NO.	Symbol	Name	Manufacturer	Type	Specification	Number	Material number	Remark								
1	Q1	Main power switch	EATON	P3-63/EA/SVB	63A	1	YE10636300000									
2	Q2	Circuit breakers	TECO	BM-63C/3063S	63A	1	YE40306303000									
3	Q3	Excitation release	TECO	MX	24VAC	1	YE40024000000									
4	Q4	Circuit breakers	TECO	BM-63C/2003S 2P	3A	1	YE40200203000									
5	Q5	Circuit breakers	TECO	BM-63C/1006S 1P	6A	1	YE40100600100									
6	Q6	Circuit breakers	TECO	BM-63C/1003S 1P	3A	1	YE40100203000									
7	K1	Contactors	SIEMENS	3RT6016-1AB01	24VAC	1	YE00601602500									
8	K2 K3	Contactors	SIEMENS	3RT6026-1AC20	24VAC	2	YE00602602600									
9	T	Transformer	JIUXIN	IN=400/415V OUT=24V/230V	120VA/350mA	1	YE70040007300									
10	S1	Thermocouple	SHINI	----	K	1	----	(1)								
11	S2 S3	Thermocouple	SHINI	----	K	2	----	(1)(2)								
12	S4	Overheat protector	----	----	----	1	----	(1)								
13	S5	Limit switch	RENEW	----	250V 5(4)	1	----	(1)								
14	S6	Communication interface board RS-485 (double Dsub-9pin connector)	YUYUN	----	PCS	1	YE90048501200									
15		Shell RS485(SAL-700G-A-19)0	BINGCHENG	----	PCS	1	YR40048500000									
16	PC1 A	Circuit board	YUYUN	TM-01-220VAC (含通讯)	180~4.30V 50/60Hz	1	YE81012200300									
17	X1	Terminal board	HONEYWELL	SK2.5	----	8	YE60002503200									
18		Terminal board	HONEYWELL	GK2.5PE	----	2	YE60002503400									
19		Terminal board	HONEYWELL	GK5PE	----	2	YE60000403500									
20		Terminal board	HONEYWELL	GK16	----	3	YE60001603200									
21		Terminal board	HONEYWELL	GK16PE	----	1	YE60001603500									
22	M1	Motor	SHINI	TP-280	400V 50Hz 2.8kW	1	----	(1)								
23	M1	Motor	SHINI	MP-280	400V 50Hz 2.8kW	1	----	(1)(3)								
24	EHT EH2	Heater	SHINI	----	400V 50Hz 12kW	2	----	(1)								
25	H1	Buzzer	JINGKANG	PK-35A	24VAC/DC	1	YE84003500600									
STM-2440 版本		Ver.E	STM-2440M 版本	Ver.E	Notes: (1)Means it's not the material inside the control box (2)Means equipped with function of displaying water outlet and return water temperature. (3)Means equipped with magnetic pump											
		Drawer		Version	G	Title		Drawing NO								
		Designer		Approved by		STM-2440		STM-2440-CE-400V-G-4								
		Proofread by				Electrical Components list 1		Scale		Standard		Page		Pages		
		Checked by		Date	20180725			Voltage		Frequency		400V		50HZ		
Mark	Before modification	Modified by		Modify date												
1		2	3	4	5	6	7	8								



1		2		3		4		5		6		7		8	
NO.	Symbol	Name	Manufacturer	Type	Specification	Number	Material number	Remark							
25	Y1	Solenoid valve	-----	-----	230VAC 50/60Hz	1	-----	(1)							
26		Terminal fittings E/GKseries(honeywell)	HONEYWELL	-----	PCS	6	YE60000003900								
A															
B															
C															
D															
STM-2440 版本		STM-2440M 版本		Ver.E		Ver.E		Notes: (1)Means it's not the material inside the control box (2)Means equipped with function of displaying water outlet and return water temperature. (3)Means equipped with magnetic pump							
		Drawer		Version		G		Title		Drawing NO		Scale		Page	
								STM-2440		STM-2440-CE-4.00V-G-5		Standard		CE	
		Designer		Approved by				Electrical Components List 2				Voltage		400V	
		Proofread by		Date		20180725						Frequency		50HZ	
Mark		Before modification		After modification		Modified by		Modify date							
 <b>信易電熱機械股份有限公司</b> <b>Shini Plastics Technologies, Inc.</b>															
1 2 3 4 5 6 7 8															



版本	Ver.E
Mark	Before modification
	After modification
	Modified by
	Modify date
	Checked by
	Proofread by
	Designer
	Drawer
	Approved by
	Date
	20180726

D	Title		Drawing No		Scale		Page		
	STM-3650 Main Circuit Diagram		STM-3650-CE-400V-F-1		CE		Page 1 Totally 4 Pages		
Ver.E		F		Version		Title		Voltage	
						STM-3650-CE-400V-F-1		400V	
						Standard		Frequency	
						CE		50HZ	
						Voltage		400V	
						Frequency		50HZ	
						Standard		CE	
						Voltage		400V	
						Frequency		50HZ	



1 2 3 4 5 6 7 8

A B C

Z/A8 Z/A8 Z/A8

0.75mm² 230V 24V 15V 0V 2 3 4 5 2/B1 2/B1 2/C1 2/C1

Q1 100A Q2 3A Q3 3A Q4 6A LZ1 LZ2 LZ3

K1 K2 K3 K4

U1 V1 W1 U2 V2 W2 U3 V3 W3 U4 V4 W4

M1 3~ EH1 EH2 EH3

P=4.0kW In=8.3A Pump P=12kW In=18A Heater 1 P=12kW In=18A Heater 2 P=12kW In=18A Heater 3

15mm² 4mm² 4mm² 4mm²

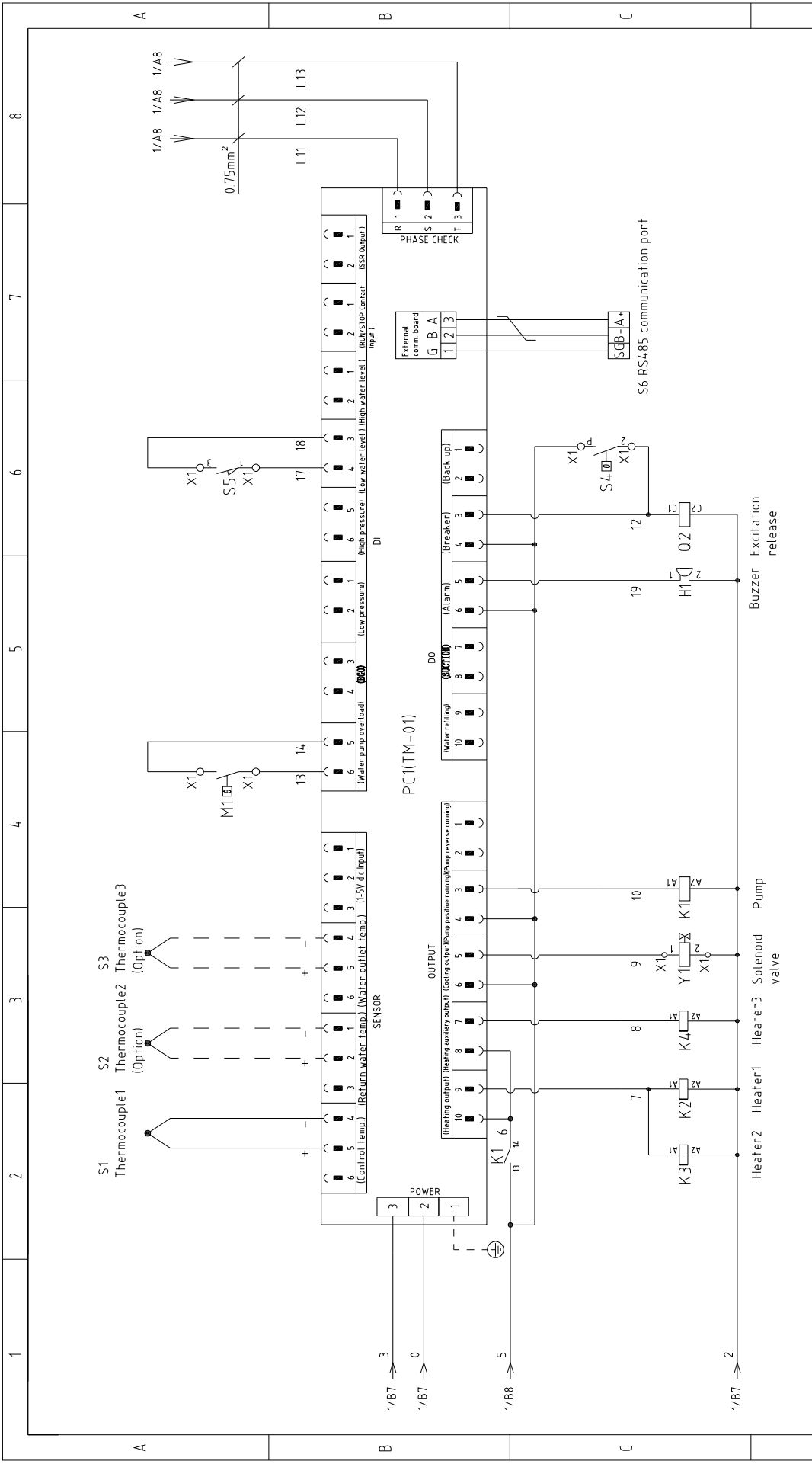
25mm² X10 PE X10 PE X10 PE X10 PE

L1 L2 L3 PE 3/PE/400V 50Hz INPUT 62.3A

1 2 3 4 5 6 7 8

A B C

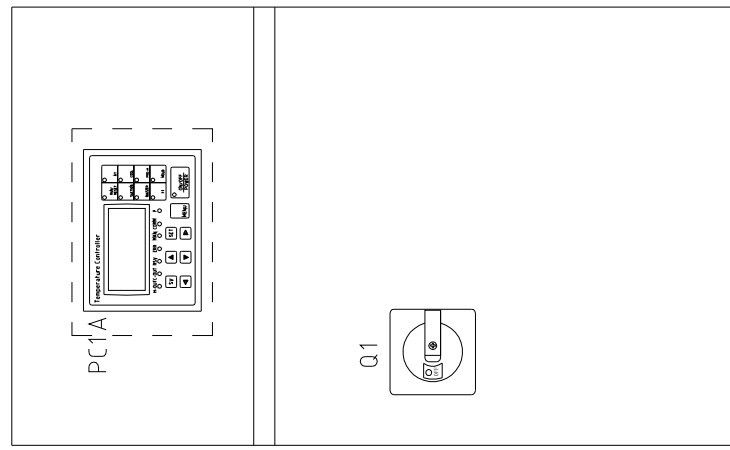
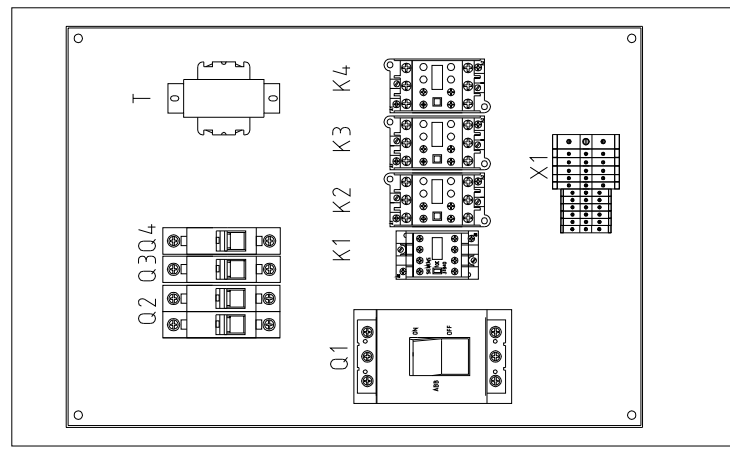
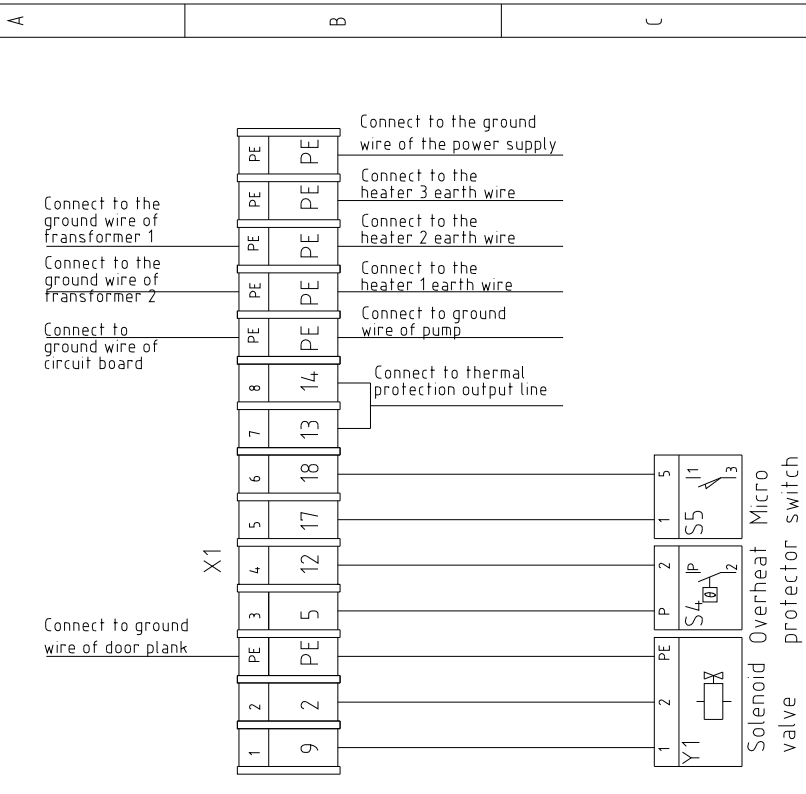
D



版本	Ver.E	Note: M1 is the overheat protection output contact of water pump.		Drawing NO		Page 2	
				STM-3650	STM-3650-CE-400V-F-2	Standard	Totally 4
Mark	Before modification	Modified by	Date	Version	F	Scale	Pages
			20180726			CE	4
		Proofread by		Approved by		Voltage	400V
		Checked by				Frequency	50HZ
		After modification					
1	2	3	4	5	6	7	8




1 2 3 4 5 6 7 8



Technical requirements: (1) Pump and pipe heater should be directly connected to the output terminals of contactor and thermal overload relay.

版本	Ver.E	Title	STM-3650	Drawing NO	STM-3650-CE-400V-F-3	Scale	Standard	Page	3	
	Electrical Components Layout		CE		Totally		4			
Mark	Before modification	Date	20180726	Approved by	Date	Checked by	Modified by	After modification	Voltage	400V
	Modified by		Frequency							50HZ
1	2	3	4	5	6	7	8	SHINI 信易電熱機械股份有限公司 Shini Plastics Technologies, Inc.		

1	2		3	4	5	6	7	8	
NO.	Symbol	Name	Manufacturer	Type	Specification	Number	Material number	Remark	
1	Q1	Breaker interlock	ABB	A1A125TMF100	100A	1	YE4.1110200000		
2		Release	ABB	SOR-C	24V-30V AC/DC	1	YE4.024.3000900		
3	Q2	Circuit breakers	TECO	BM-63C/2003S 2P	3A	1	YE4.0200203000	A	
4	Q3	Circuit breakers	TECO	BM-63C/1003S 1P	3A	1	YE4.0100203000		
5	Q4	Circuit breakers	TECO	BM-63C/1006S 1P	6A	1	YE4.0100600100		
6	K1	Contactors	SIEMENS	3RT6017-1AB01	24VAC	1	YE00601702500		
7	K2 K3 K4	Contactors	SIEMENS	3RT6026-1AC20	24VAC	3	YE00602602600		
8	T	Transformer	BAIYUN	IN=400/415V OUT=24V/230V	180VA/350mA	1	YE7004.00074.00		
9	S1	Thermocouple	SHINI	----	K	1	----	(1)	
10	S2 S3	Thermocouple	SHINI	----	K	2	----	(2)	
11	S4	Overheat protector	----	----	----	1	----	(1)	
12	S5	Limit switch	RENEW	----	250V 5(4)	1	----	(1)	
13	S6	Communication interface board RS-485 (double Dsub-9pin connector)	YUYUN	----	PCS	1	YE9004.8501200		
14		Shell RS485(SAL-700G-A-19)0	BINCHEG	----	PCS	1	YR4.004.8500000		
15	PC1 A	Circuit board	YUYUN	TM-01 (含通讯)	180~430V 50/60Hz	1	YE81012200300		
16	X1	Terminal board	HONEYWELL	SK2.5	----	8	YE60002503200		
17		Terminal board	HONEYWELL	GK2.5PE	----	2	YE60002503400		
18		Terminal board	HONEYWELL	GK5PE	----	3	YE600004.03500		
19		Terminal board	HONEYWELL	GK35PE	----	1	YE60003503500	C	
20	M1	Motor	SHINI	----	4.00V 50Hz 4.0kW	1	----	(1)	
21	EH1 EH2 EH3	Heater	SHINI	----	4.00V 50Hz 12kW	3	----	(1)	
22	H1	Buzzer	JINGKANG	PK-35A	24VAC/DC	1	YE84.003500600		
23	Y1	Solenoid valve	----	----	24VAC	1	----	(1)	
24		Terminal fittings E/GKseries(honeywell)	HONEYWELL	----	PCS	6	YE60000003900		
<b>版本</b> Ver.E Notes: (1)Means it's not the material inside the control box (2)Means equipped with function of displaying water outlet and return water temperature.									
D			Title STM-3650 Electrical Components List Drawing NO STM-3650-CE-400V-F-4	Version F Approved by	Scale Standard CE	Page 4 Totaly 4 Pages			
Mark	Before modification	Modified by	Modify date	Date	 信易電熱機械股份有限公司 Shini Plastics Technologies, Inc.		Voltage	400V	
				20180726			Frequency	50HZ	
1	2	3	4	5	6	7	8		