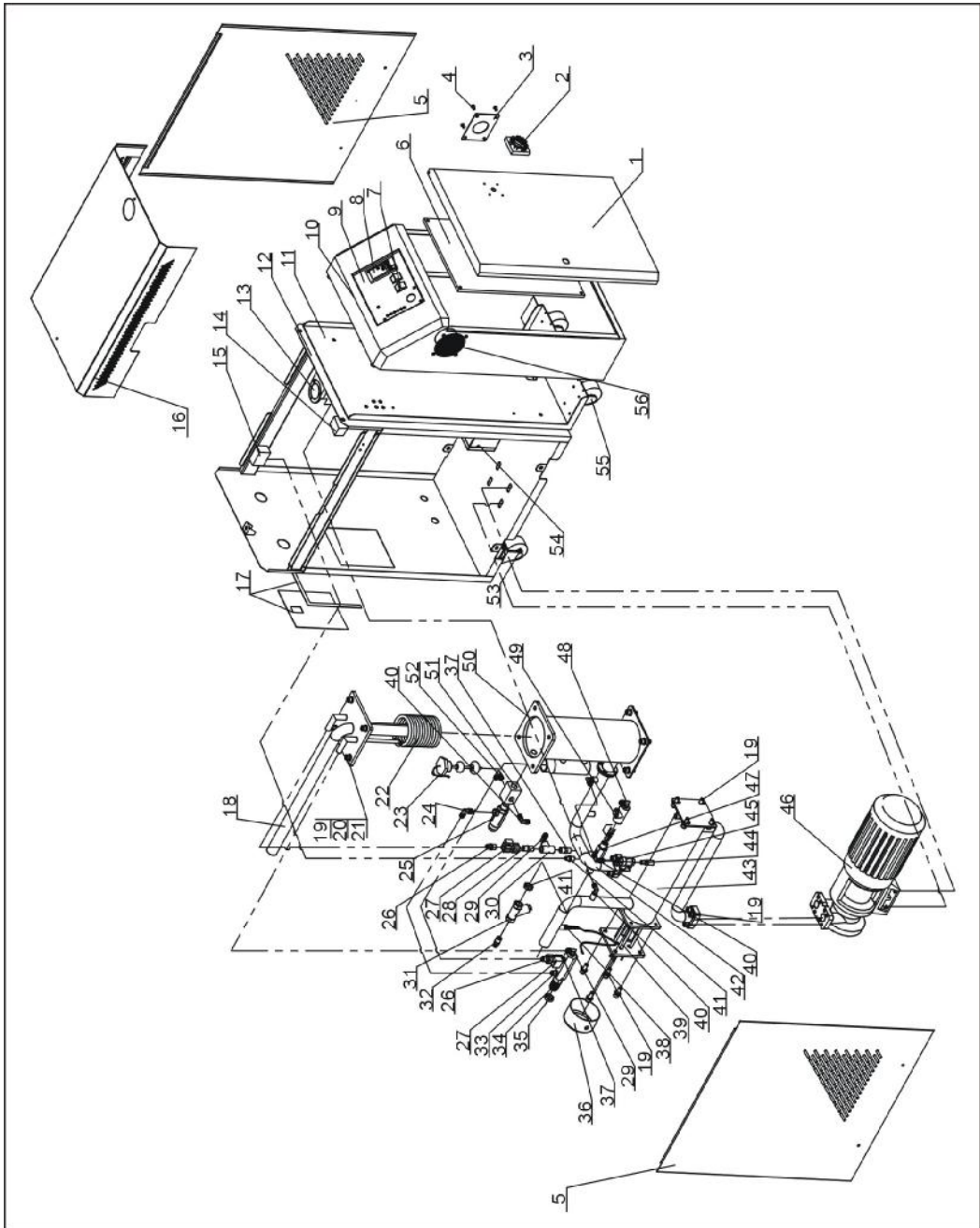


2.2 Assembly Drawing

2.2.1 Assembly Drawing (STM-940-HPW)



Remarks: Please refer to material list 2.2.2 for specific explanation of the Arabic numbers in parts drawing.

Picture 2-2: Assembly Drawing (STM-940-HPW)

2.2.2 Parts List (STM-940-HPW)

Table 2-4: Parts List (STM-940-HPW)

No.	Name	Part No.	No.	Name	Part No.
1	Door plate	-	26	Copper Teflon pipe male elbow 3/8PT×3/8HL	BH12030800610
2	Main power switch*	YE10200300000	27	Solemoid valve *3/8"	YE32331000000
3	Fixed plate of cable clamp	-	28	Copper pipe coupler 3/8PT×3/8PT	BH12030800110
4	Screw M6	YW62061000000	29	Copper Teflon pipe contactor 3/8PT×3/8HL	YW04030800300
5	Side plate	-	30	Stainless steel T-joint 3/8"	YW52030800000
6	Control cabinet base plate	-	31	Y -type filter 1/2PT	YW57010200000
7	Rocker switch	YE10210400000	32	Copper inserted core	BH12131200010
8	Temperature controller	YE85005000000	33	Copper Teflon pipe contactor 1/4PT×3/8H	BH12010400510
9	Control panel	-	34	Copper contactor unit 8	BH12060704810
10	Electric cabinet	-	35	General copper contactor for unit fron 1 to 4.	-
11	Rear plate of electric cabinet	-	36	Pipe shield	BL80091000120
12	Rack	-	37	Copper pipe coupler 1/4PT×3/8PT	BH12010400310
13	Pressure guage 0~15kG	YW85015000000	38	Thermocouple	BE90342500050
14	High pressure switch controller	YE90002000000	39	Heater 9kW	BH70091000150
15	Low pressure switch controller	YE90000800000	40	Copper Teflon pipe contactor 1/4PT×1/4HL	YW04010400400
16	Cover plate	-	41	Copper Teflon pipe contactor 1/4PT×1/4H	BH12010400410
17	Cover plate and supporting plate of rear plate	-	42	Pump inlet	-
18	Cooling tank cover	-	43	Heating tank	-
19	M10×25 socket haed cap screw	YW61102500000	44	Copper pipe coupler 1/4PT×1/4PT	BH12010400110
20	Flat washer 10×25	YW66102500000	45	Butterfly damper 1/4"	YW50220000000
21	Spring washer 10	YW65010000000	46	Magnetic pump MP-280	BM20283300050
22	Cooling pipe	-	47	Copper contactor unit 7	BH12091000010
23	Electrical floating ball	YE13001500000	48	Copper Teflon pipe contactor 1/2PT×3/8HL	YW04010200200
24	Copper Teflon pipe contactor 1/2PT×3/8HL	YW04010200200	49	Non-return valve 1/2"	YW59010200100
25	Safety valve 14kg open	-	50	Cooling tank	-