

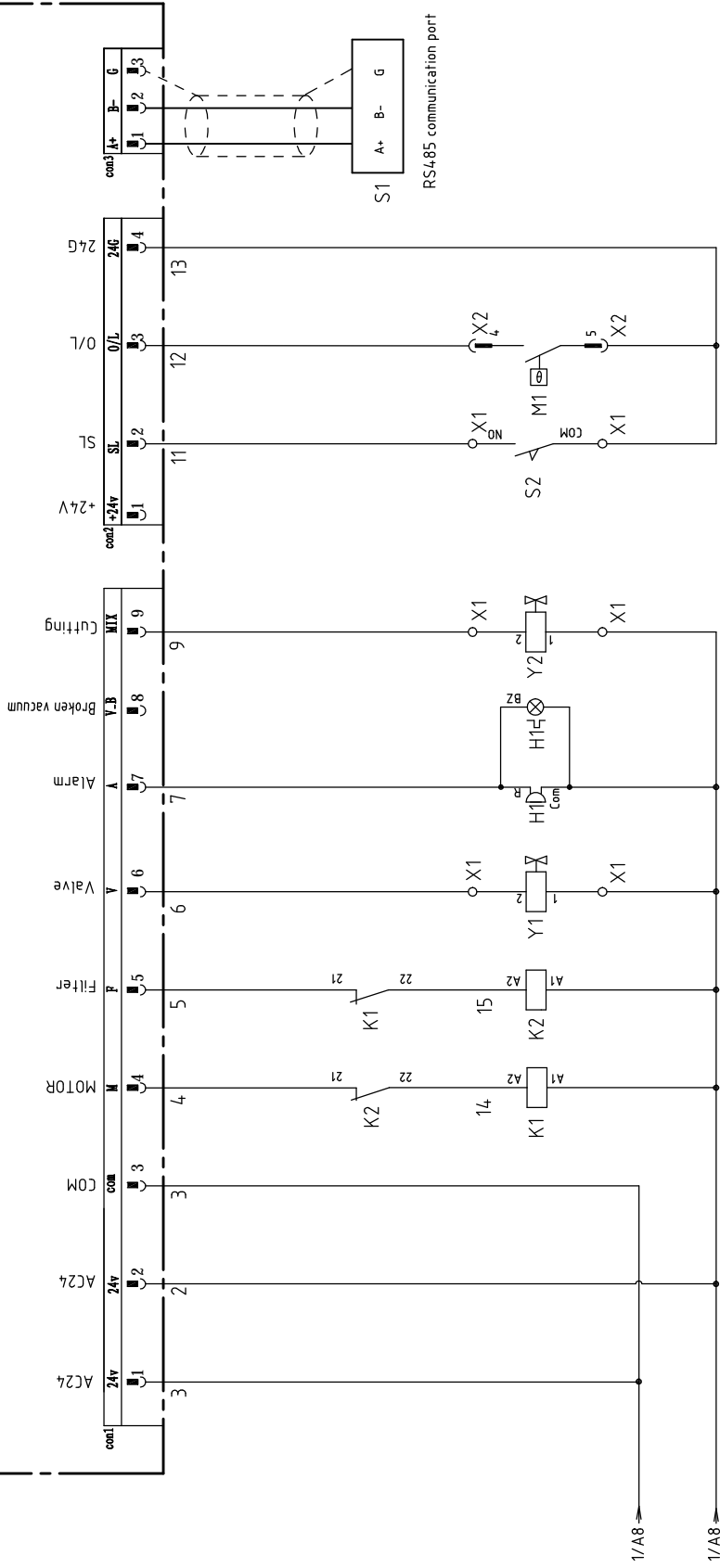
机型号 Ver.B

Feeding motor  
 0.37KW In=2.3A (SAL-430)  
 0.75KW In=4.1A (SAL-460)

Mark	Before modification	Modified by	Modify date	Version	D	Title	Drawing NO.		Scale	Page 1	
	After modification	Checked by	Date				SAL-430/460	SAL-430/460-CE-230V-D-1			Standard
						Main Circuit Diagram				Voltage	
										3φ230V	
										Frequency	
										50HZ	
										8	




# CS-23

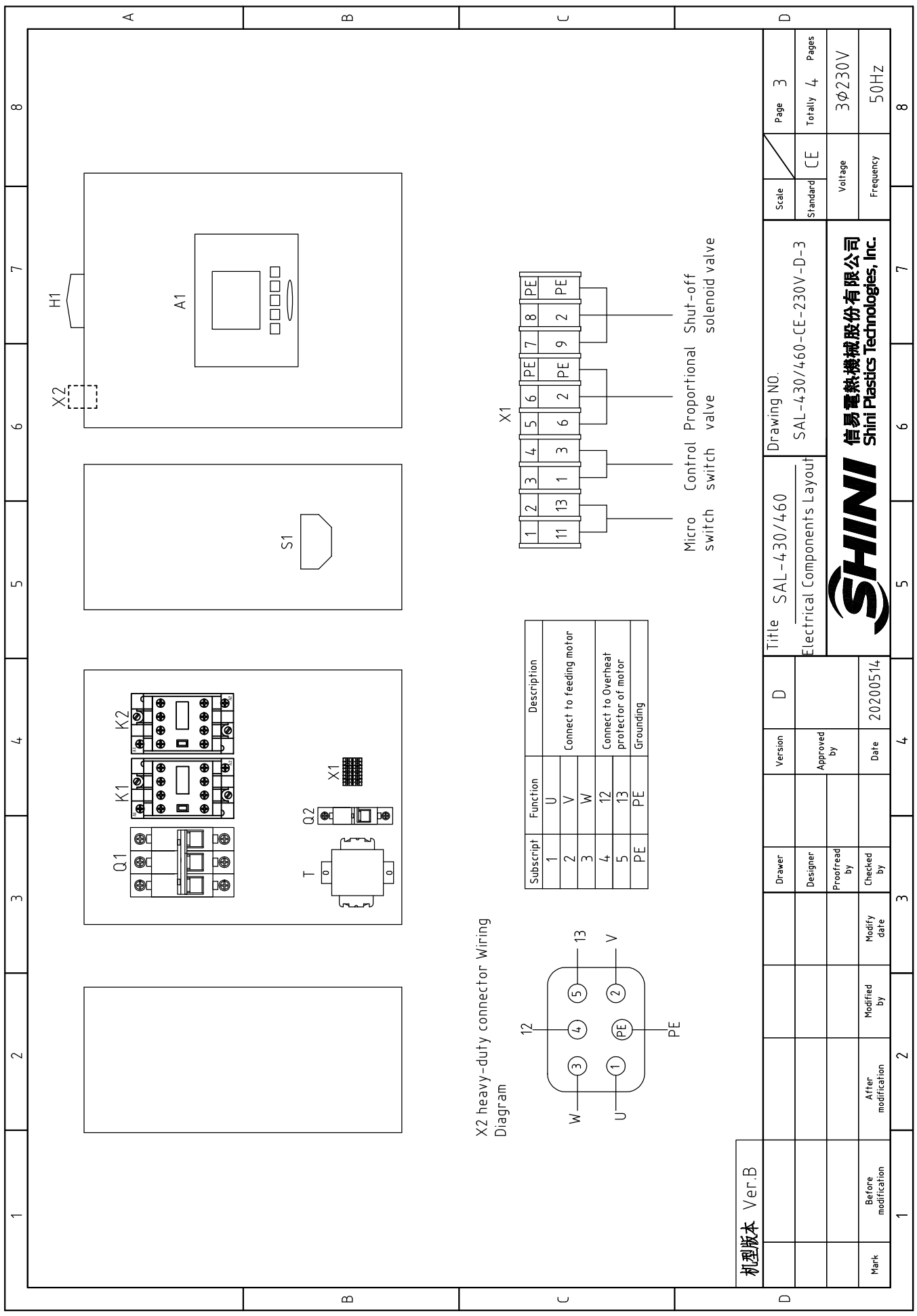


Motor forward reverse contactor  
 Motor reverse valve  
 Proportional valve  
 Shut-off solenoid valve  
 Three color alarm light  
 Micro switch  
 Motor overload protection

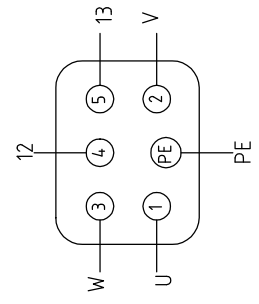
机型版本 Ver.B

Notes: M1 is the overheat protector of blower.

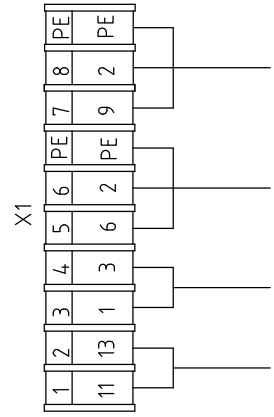
Mark	Before modification	Modified by	Modify date	Date	20200514	Approved by	Version	D	Title	Drawing NO.		Page 2		
	After modification	Modified by	Modify date							SAL-430/460-CE-230V-D-2			Standard	CE
 <p>信易電熱機械股份有限公司 Shini Plastics Technologies, Inc.</p>										Scale	Page 2			
										Standard	CE	Totally	4	Pages
										Voltage		3 $\phi$ 230V		
										Frequency		50Hz		
1	2	3	4	5	6	7	8							



X2 heavy-duty connector Wiring Diagram



Subscript	Function	Description
1	U	
2	V	Connect to feeding motor
3	W	
4	12	Connect to Overheat protector of motor
5	13	
PE	PE	Grounding



Micro switch  
Control Proportional solenoid valve  
Shut-off solenoid valve

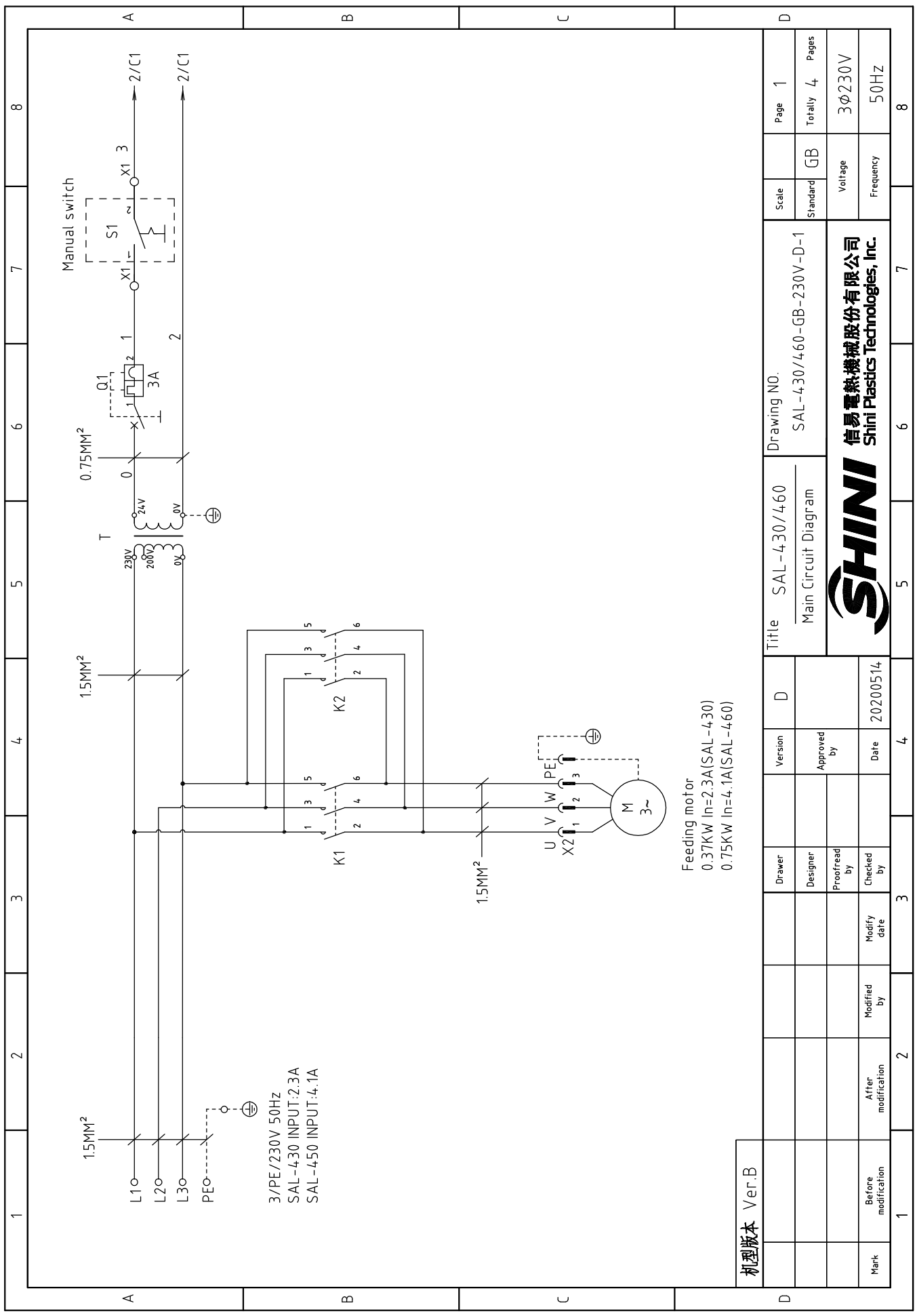
Mark	Before modification	Modified by	Modify date
	After modification	Modified by	Modify date

机型号版本	Ver.B
Drawer	
Designer	
Proofread by	
Checked by	
Date	20200514
Version	
Approved by	
D	

Title		SAL-430/460		Drawing NO.		Page 3	
Electrical Components Layout		SAL-430/460-CE-230V-D-3		Standard		CE	
Voltage		3φ230V		Frequency		50HZ	
Totally		4		Pages		8	







1.5MM<sup>2</sup>  
 L1 0  
 L2 0  
 L3 0  
 PEO-----  
 3/PE/230V 50Hz  
 SAL-430 INPUT:2.3A  
 SAL-450 INPUT:4.1A

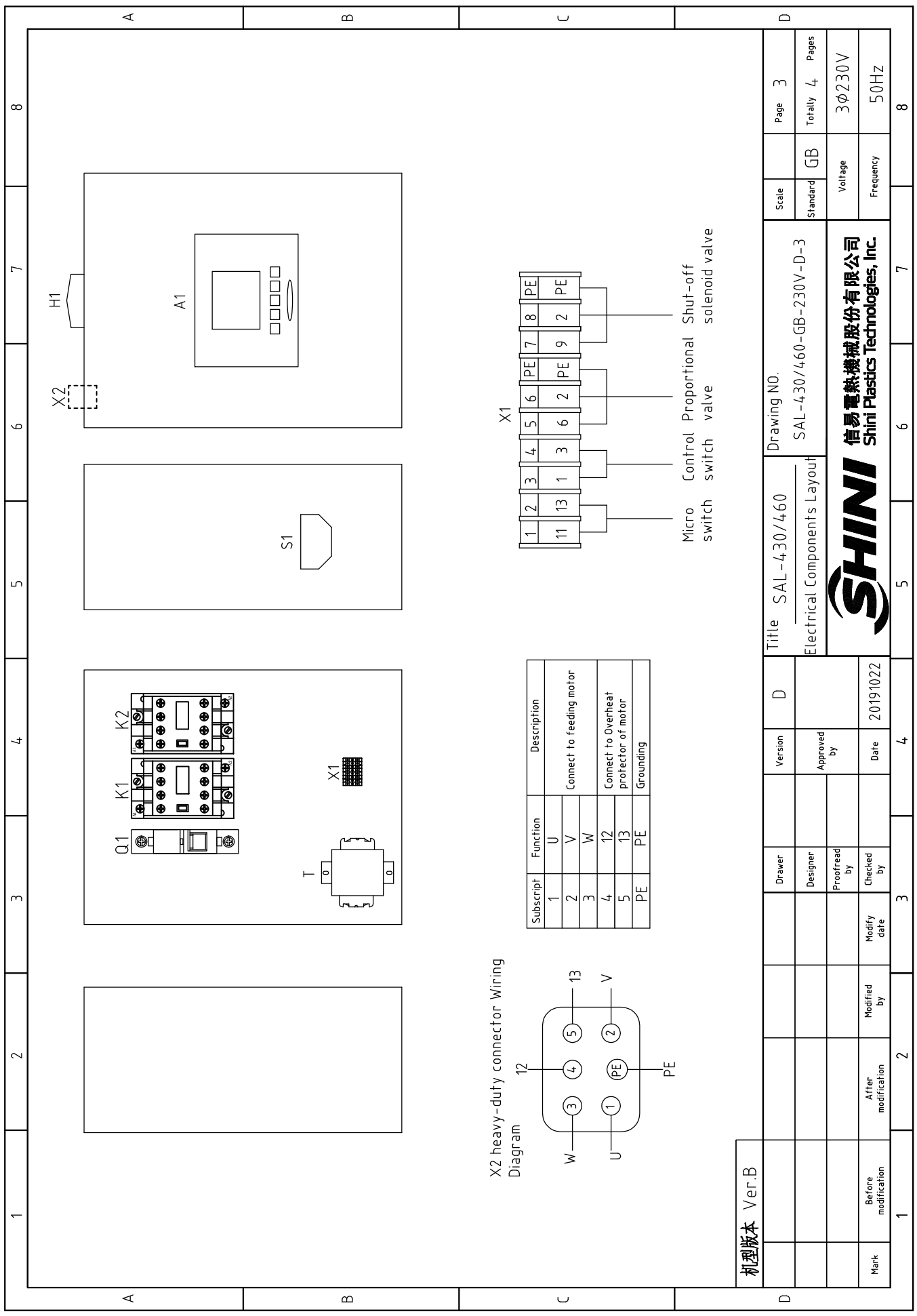
Feeding motor  
 0.37KW In=2.3A(SAL-430)  
 0.75KW In=4.1A(SAL-460)

机版本 Ver.B

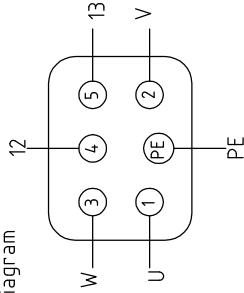
Mark	Before modification	Modified by	Modify date	Checked by	Date	Approved by	Version	D	Title	Drawing NO.	Scale	Page 1
	After modification	Modified by	Modify date								Standard	Totally 4
										GB	4	
										Voltage	3φ230V	
										Frequency	50HZ	
										8		



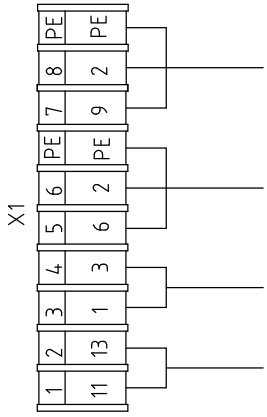




X2 heavy-duty connector Wiring Diagram



Subscript	Function	Description
1	U	Connect to feeding motor
2	V	
3	W	
4	12	Connect to Overheat protector of motor
5	13	Grounding



机版本 Ver.B

Mark	Before modification	After modification	Modified by	Modify date	Checked by	Date	20191022
Title	SAL-430/460		Electrical Components Layout		Drawing NO.		
	SAL-430/460		SAL-430/460-GB-230V-D-3		Scale		
Standard	GB		Voltage		Page 3		
	GB		Frequency		Totally 4 Pages		
Voltage	3φ230V		Frequency		Page 3		
	50HZ		Frequency		Totally 4 Pages		
SHINI		信易电热机械股份有限公司		Shini Plastics Technologies, Inc.		8	

