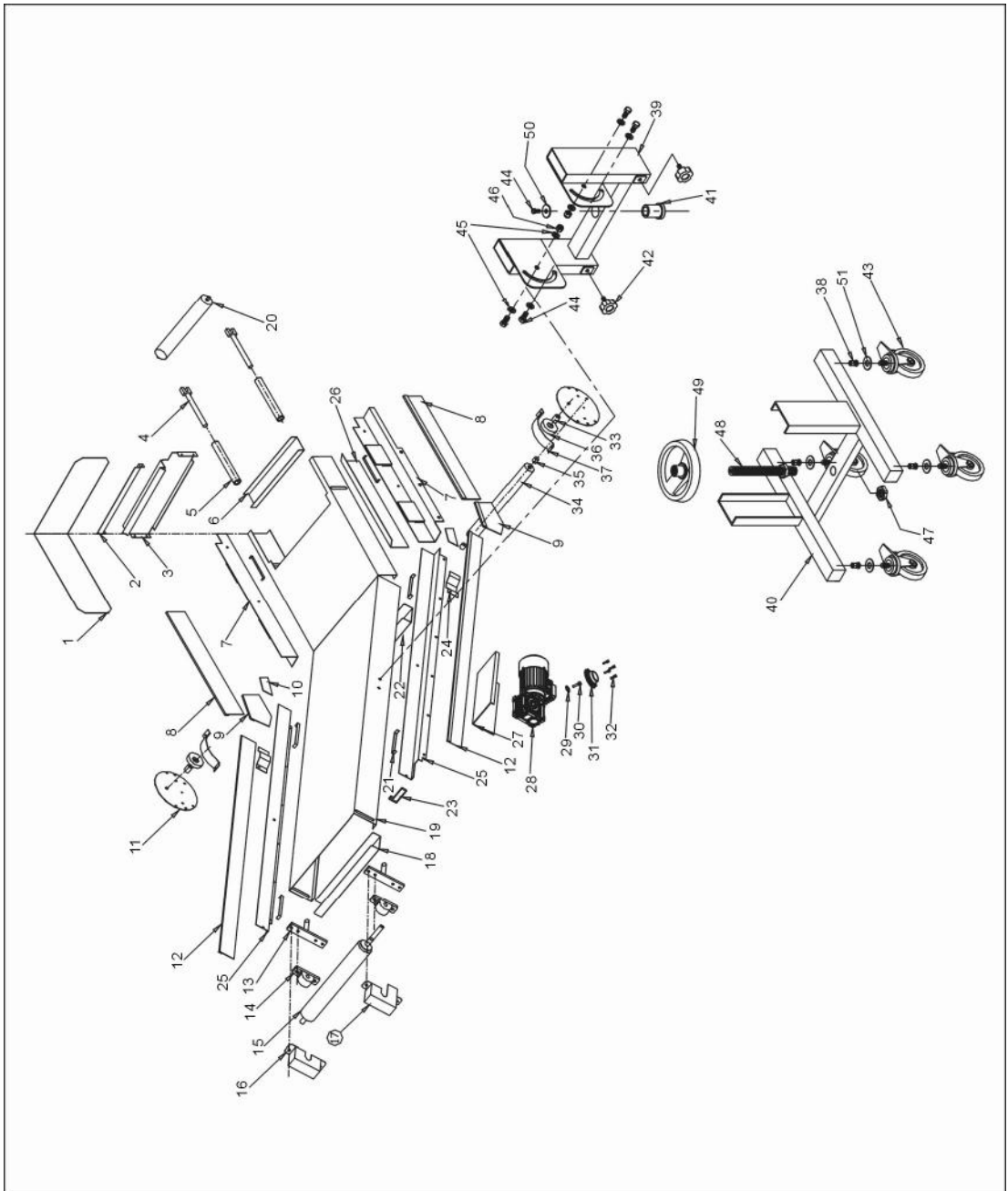


## 2.2 Assembly Drawing

### 2.2.1 Assembly Drawing



Note: Please refer to 2.2.2 material list about the parts code.

Picture 2-3: Assembly Drawing

## 2.2.2 Parts list

Chart 2-1: Parts List (CB-1)

No.	Name	Part No.	No.	Name	Part No.
1	Material block	-	27	Protection board for the motor	-
2	Front top board	-	28	Gear motor	YM50102000000
3	Front board	-	29	Flat washer (Φ10x30)	YW66103200000
4	Fork head screw shaft	BH10000603840	30	Six-corner head screw (M8x30)	YW60083000100
5	Adjustable sleeve	BH10060400010	31	The cover for the gearmotor	BL56000032320
6	Front beam	-	32	Hexagram inside screw (M6x12)	YW61061200000
7	Front side board	-	33	The sleeve for the press out wheel	BH10062500010
8	Front encircle board	-	34	Iron stick (Φ50x490)	YW08041300000
9	Middle encircle board	-	35	The small sleeve	BH10062600010
10	Middle side board	-	36	Combination of the press out wheel	BH10062700010
11	Middle protection board	-	37	Cover for the press out wheel	-
12	Back encircle board	-	38	Undraw cat M12	YW64101600000
13	Combination of the fixed board	BH10061300010	39	Lifter	BL56000210121
14	The base of the bearing	YW11020500200	40	Base	BL56000600940
15	Feeding rotor (Φ73x490)	YW08041100000	41	Adjustable glue sleeve	BH10060400010
16	Right below cover	-	42	Butterfly screw shaft (Φ50 4L M10x15)	YR40104500000
17	Left below cover	-	43	Castor	YW03010000000
18	Back beam	-	44	Adjustable bolt (M12x25)	YW60122500100
19	Horizontal support shelf	-	45	Shim (D12)	YW66061200000
20	Feeding rotor	YW08041200000	46	Nut (M12)	YW64101600000
21	The inner line bar	-	47	Nut (M27)	YW64002700000
22	Middle beam	-	48	Screw shaft (M27)	BH10061100010
23	The motor confine board	-	49	Driving wheel (M27)	YR40061300000
24	Side belt block	-	50	Main screw shim (12x48)	-
25	Back side board	-	51	Shim (18x48x3)	-
26	Feed-in board	-			

\* means possible broken parts. \*\* means easy broken part. and spare backup is suggested. Please confirm the version of manual before placing the purchase order to guarantee that the item number of the spare part is in accordance with the real object.

Chart 2-2: Parts List (CB-2)

No.	Name	Part No.	No.	Name	Part No.
1	Material block	-	27	Protection board for the motor	-
2	Front top board	-	28	Gear motor	YM50102000000
3	Front board	-	29	Flat washer (Φ10x30)	YW66103200000
4	Fork head screw shaft	BH10000603840	30	Six-corner head screw (M8x30)	YW60083000100
5	Adjustable sleeve	BH10060400010	31	The cover for the gearmotor	BL56000032320
6	Front beam	-	32	Hexagram inside screw (M6x12)	YW61061200000
7	Front side board	-	33	The sleeve for the press out wheel	BH10062500010
8	Front encircle board	-	34	Iron stick (Φ50x490)	YW08041300000
9	Middle encircle board	-	35	The small sleeve	BH10062600010
10	Middle side board	-	36	Combination of the press out wheel	BH10062700010
11	Middle protection board	-	37	Cover for the press out wheel	-
12	Back encircle board	-	38	Undraw cat M12	YW64101600000
13	Combination of the fixed board	BH10061300010	39	Lifter	BL56000210121
14	The base of the bearing	YW11020500200	40	Base	BL56000600940
15	Feeding rotor (Φ73x490)	YW08041100000	41	Adjustable glue sleeve	BH10060400010
16	Right below cover	-	42	Butterfly screw shaft (Φ50 4L M10x15)	YR40104500000
17	Left below cover	-	43	Castor	YW03010000000
18	Back beam	-	44	Adjustable bolt (M12x25)	YW60122500100
19	Horizontal support shelf	-	45	Shim (D12)	YW66061200000
20	Feeding rotor	YW08041200000	46	Nut (M12)	YW64101600000
21	The inner line bar	-	47	Nut (M27)	YW64002700000
22	Middle beam	-	48	Screw shaft (M27)	BH10061100010
23	The motor confine board	-	49	Driving wheel (M27)	YR40061300000
24	Side belt block	-	50	Main screw shim (12x48)	-
25	Back side board	-	51	Shim (18x48x3)	-
26	Feed-in board	-			

\* means possible broken parts.

\*\* means easy broken part. and spare backup is suggested.

Please confirm the version of manual before placing the purchase order to guarantee that the item number of the spare part is in accordance with the real object.

Chart 2-3: Parts List (CB-3)

No.	Name	Part No.	No.	Name	Part No.
1	Material block	-	27	Protection board for the motor	-
2	Front top board	-	28	Gear motor	YM50102000000
3	Front board	-	29	Flat washer (Φ10x30)	YW66103200000
4	Fork head screw shaft	BH10000603840	30	Six-corner head screw (M8x30)	YW60083000100
5	Adjustable sleeve	BH10060400010	31	The cover for the gearmotor	BL56000032320
6	Front beam	-	32	Hexagram inside screw (M6x12)	YW61061200000
7	Front side board	-	33	The sleeve for the press out wheel	BH10062500010
8	Front encircle board	-	34	Iron stick (Φ50x490)	YW08041300000
9	Middle encircle board	-	35	The small sleeve	BH10062600010
10	Middle side board	-	36	Combination of the press out wheel	BH10062700010
11	Middle protection board	-	37	Cover for the press out wheel	-
12	Back encircle board	-	38	Undraw cat M12	YW64101600000
13	Combination of the fixed board	BH10061300010	39	Lifter	BL56000210121
14	The base of the bearing	YW11020500200	40	Base	BL56000600940
15	Feeding rotor (Φ73x490)	YW08041100000	41	Adjustable glue sleeve	BH10060400010
16	Right below cover	-	42	Butterfly screw shaft (Φ50 4L M10x15)	YR40104500000
17	Left below cover	-	43	Castor	YW03010000000
18	Back beam	-	44	Adjustable bolt (M12x25)	YW60122500100
19	Horizontal support shelf	-	45	Shim (D12)	YW66061200000
20	Feeding rotor	YW08041200000	46	Nut (M12)	YW64101600000
21	The inner line bar	-	47	Nut (M27)	YW64002700000
22	Middle beam	-	48	Screw shaft (M27)	BH10061100010
23	The motor confine board	-	49	Driving wheel (M27)	YR40061300000
24	Side belt block	-	50	Main screw shim (12x48)	-
25	Back side board	-	51	Shim (18x48x3)	-
26	Feed-in board	-			

\* means possible broken parts.

\*\* means easy broken part. and spare backup is suggested.

Please confirm the version of manual before placing the purchase order to guarantee that the item number of the spare part is in accordance with the real object.

Chart 2-4: Parts List (CB-4)

No.	Name	Part No.	No.	Name	Part No.
1	Material block	-	27	Protection board for the motor	-
2	Front top board	-	28	Gear motor	YM50102000000
3	Front board	-	29	Flat washer (Φ10x30)	YW66103200000
4	Fork head screw shaft	BH10000603840	30	Six-corner head screw (M8x30)	YW60083000100
5	Adjustable sleeve	BH10060400010	31	The cover for the gearmotor	BL56000032320
6	Front beam	-	32	Hexagram inside screw (M6x12)	YW61061200000
7	Front side board	-	33	The sleeve for the press out wheel	BH10062700010
8	Front encircle board	-	34	Iron stick (Φ50x490)	YW08041300000
9	Middle encircle board	-	35	The small sleeve	BH10062600010
10	Middle side board	-	36	Combination of the press out wheel	BH10062700010
11	Middle protection board	-	37	Cover for the press out wheel	-
12	Back encircle board	-	38	Undraw cat M12	YW64101600000
13	Combination of the fixed board	BH10061300010	39	Lifter	-
14	The base of the bearing	YW11020500200	40	Base	-
15	Feeding rotor (Φ73x490)	YW08041100000	41	Adjustable glue sleeve	BH10060400010
16	Right below cover	-	42	Butterfly screw shaft (Φ50 4L M10x15)	YR40104500000
17	Left below cover	-	43	Castor	YW03010000000
18	Back beam	-	44	Adjustable bolt (M12x25)	YW60122500100
19	Horizontal support shelf	-	45	Shim (D12)	YW66061200000
20	Feeding rotor	YW08041200000	46	Nut (M12)	YW64101600000
21	The inner line bar	-	47	Nut (M27)	YW64002700000
22	Middle beam	-	48	Screw shaft (M27)	BH10061100010
23	The motor confine board	-	49	Driving wheel (M27)	YW09002700000
24	Side belt block	-	50	Main screw shim (12x48)	-
25	Back side board	-	51	Shim (18x48x3)	-
26	Feed-in board	-			

\* means possible broken parts.

\*\* means easy broken part. and spare backup is suggested.

Please confirm the version of manual before placing the purchase order to guarantee that the item number of the spare part is in accordance with the real object.

Chart 2-5: Parts List (CB-5)

No.	Name	Part No.	No.	Name	Part No.
1	Material block	-	27	Protection board for the motor	-
2	Front top board	-	28	Gear motor	YM50102000000
3	Front board	-	29	Flat washer (Φ10x30)	YW66103200000
4	Fork head screw shaft	BH10000603840	30	Six-corner head screw (M8x30)	YW60083000100
5	Adjustable sleeve	BH10060400010	31	The cover for the gearmotor	BL56000032320
6	Front beam	-	32	Hexagram inside screw (M6x12)	YW61061200000
7	Front side board	-	33	The sleeve for the press out wheel	BH10062700010
8	Front encircle board	-	34	Iron stick (Φ50x490)	YW08051300000
9	Middle encircle board	-	35	The small sleeve	BH10062600010
10	Middle side board	-	36	Combination of the press out wheel	BH10062700010
11	Middle protection board	-	37	Cover for the press out wheel	-
12	Back encircle board	-	38	Undraw cat M12	YW64101600000
13	Combination of the fixed board	BH10061300010	39	Lifter	-
14	The base of the bearing	YW11020500200	40	Base	-
15	Feeding rotor (Φ73x490)	YW08051100000	41	Adjustable glue sleeve	BH10060400010
16	Right below cover	-	42	Butterfly screw shaft (Φ50 4L M10x15)	YR40104500000
17	Left below cover	-	43	Castor	YW03010000000
18	Back beam	-	44	Adjustable bolt (M12x25)	YW60122500100
19	Horizontal support shelf	-	45	Shim (D12)	YW66061200000
20	Feeding rotor	YW08051200000	46	Nut (M12)	YW64101600000
21	The inner line bar	-	47	Nut (M27)	YW64002700000
22	Middle beam	-	48	Screw shaft (M27)	BH10061100010
23	The motor confine board	-	49	Driving wheel (M27)	YW09002700000
24	Side belt block	-	50	Main screw shim (12x48)	-
25	Back side board	-	51	Shim (18x48x3)	-
26	Feed-in board	-			

\* means possible broken parts.

\*\* means easy broken part. and spare backup is suggested.

Please confirm the version of manual before placing the purchase order to guarantee that the item number of the spare part is in accordance with the real object.

Chart 2-6: Parts List (CB-6)

No.	Name	Part No.	No.	Name	Part No.
1	Material block	-	27	Protection board for the motor	-
2	Front top board	-	28	Gear motor	YM50102000000
3	Front board	-	29	Flat washer (Φ10x30)	YW66103200000
4	Fork head screw shaft	BH10000603840	30	Six-corner head screw (M8x30)	YW60083000100
5	Adjustable sleeve	BH10060400010	31	The cover for the gearmotor	BL56000032320
6	Front beam	-	32	Hexagram inside screw (M6x12)	YW61061200000
7	Front side board	-	33	The sleeve for the press out wheel	BH10062700010
8	Front encircle board	-	34	Iron stick (Φ50x490)	YW08063700000
9	Middle encircle board	-	35	The small sleeve	BH10062600010
10	Middle side board	-	36	Combination of the press out wheel	BH10062700010
11	Middle protection board	-	37	Cover for the press out wheel	-
12	Back encircle board	-	38	Undraw cat M12	YW64101600000
13	Combination of the fixed board	BH10061300010	39	Lifter	-
14	The base of the bearing	YW11020500200	40	Base	-
15	Feeding rotor (Φ73x490)	YW08063500000	41	Adjustable glue sleeve	BH10060400010
16	Right below cover	-	42	Butterfly screw shaft (Φ50 4L M10x15)	YR40104500000
17	Left below cover	-	43	Castor	YW03010000000
18	Back beam	-	44	Adjustable bolt (M12x25)	YW60122500100
19	Horizontal support shelf	-	45	Shim (D12)	YW66061200000
20	Feeding rotor	YW08063600000	46	Nut (M12)	YW64101600000
21	The inner line bar	-	47	Nut (M27)	YW64002700000
22	Middle beam	-	48	Screw shaft (M27)	BH10061100010
23	The motor confine board	-	49	Driving wheel (M27)	YW09002700000
24	Side belt block	-	50	Main screw shim (12x48)	-
25	Back side board	-	51	Shim (18x48x3)	-
26	Feed-in board	-			

\* means possible broken parts.

\*\* means easy broken part. and spare backup is suggested.

Please confirm the version of manual before placing the purchase order to guarantee that the item number of the spare part is in accordance with the real object.