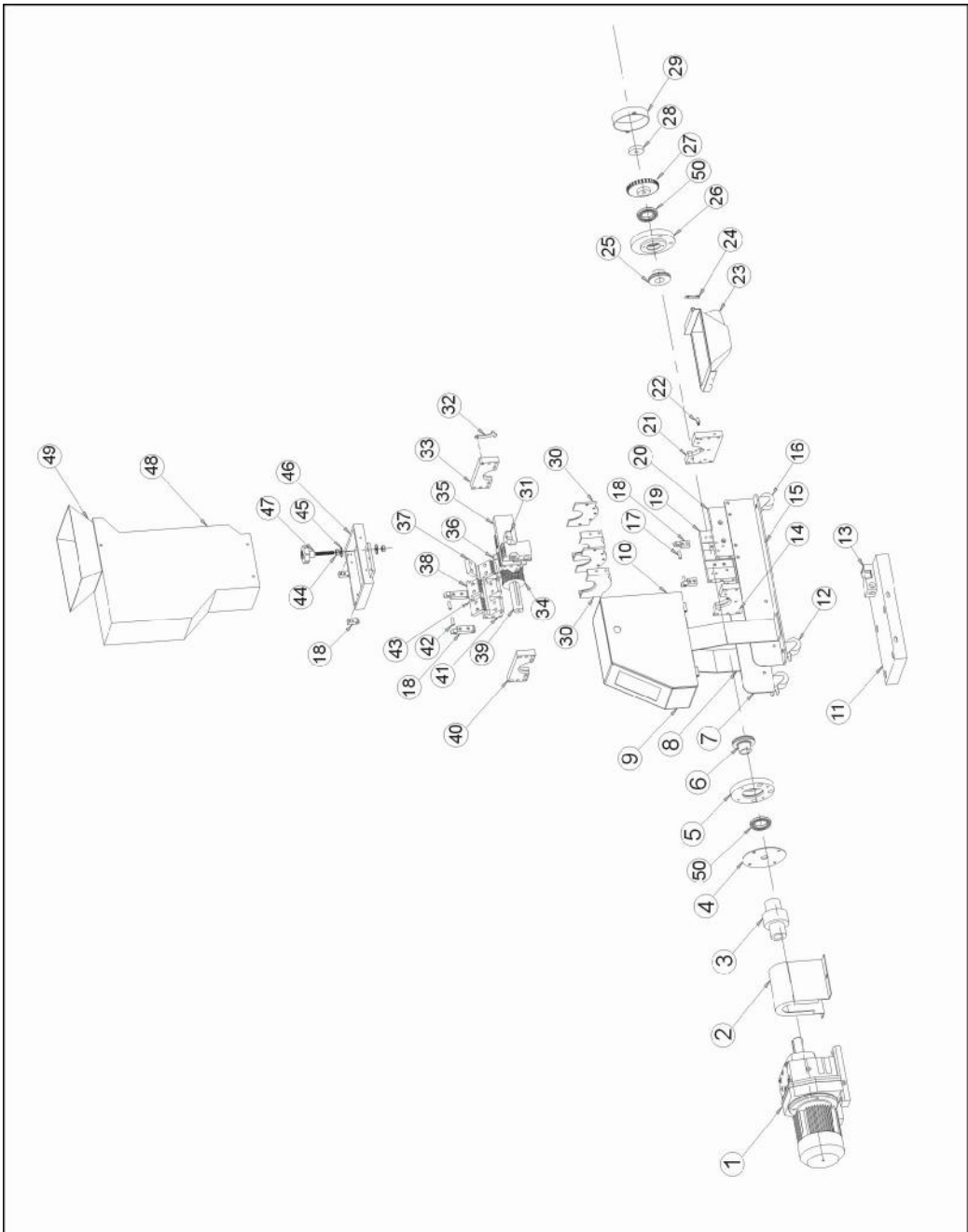


2.2 Assembly Drawing

2.2.1 Assembly Drawing



Note: Please refer to 2.2.2 material list about the parts code.

Picture 2-5: Assembly Drawing

2.2.2 Parts list

Table 2-1: Parts List

No.	Name	Part No.	
		SG-1411	SG-1417
1	Gear motor	YM10471000000	YM10471000000
2	Coupling cover	-	-
3	Coupling	YW11305500000	YW11305500000
4	Bearing cover on left side	-	-
5	Left bearing block	BW30001400010	BW30001400010
6	Left bearing sleeve	BW30014000010	BW30014000010
7	Right side fixing plate for castor	-	-
8	Sustain plate for electrical control box	-	-
9	Housing of electrical control box	-	-
10	Top side plate of control box	-	-
11	Fixing plate for gear motor	-	-
12	Turnable castor	YW03002500100	YW03002500100
13	Safety switch**	YE16147600100	YE16147600100
14	Left bearing holder at bottom	BH10140000110	BH10140000110
15	Right side fixing plate for castor	-	-
16	Fixed castor	YW03002500200	YW03002500200
17	Dowel	BH10082700010	BH10082700010
18	Locating block	-	-
19	Back case block at bottom	BH10141100010	BH10141700010
20	Front case block at bottom	BH10141100210	BH10141700110
21	Right bearing holder at bottom	BH10140000010	BH10140000010
22	Pothook	BH10141100110	BH10141100110
23	Storage box	BL51141110020	BL51141710020
24	Check plate for storage box	-	-
25	Right bearing sleeve	BW30001400110	BW30001400110
26	Right bearing block	BW30001420010	BW30001420010
27	Wheel sensor	BH10141101710	BH10141101710
28	Special washer	-	-
29	Wheel sensor cover	-	-
30	Layer	BH10001400510	BH10001400510

No.	Name	Part No.	
		SG-1411	SG-1417
31	Fixing plate for safety switch	-	-
32	Pothook	-	-
33	Right bearing holder at top	BH10140000210	BH10140000210
34	Teeth cutter*	YW40141100300	YW40141700300
35	Front case block at top	YW30141100100	YW30141700100
36	Staggered blade*	YW40141100300	YW40141700300
37	Fixed blade 2*	YW40141100300	YW40141700300
38	Fixed blade 3*	YW40141100300	YW40141700300
39	Main shaft	BH10141101010	BH10141701110
40	Left bearing holder at top	BH10140000310	BH10140000310
41	Back case block at top	BW30141100000	YW30141700000
42	Dowel pin(φ8x32)	BH10083200010	BH10083200010
43	Fixed blade 1*	YW40141100300	YW40141700300
44	Screw nut M10	YW64001000300	YW64001000300
45	Washer	-	-
46	Feed box base	-	-
47	Star knob	YW09001000000	YW09001000000
48	Feed box	YR90141100100	YR90141700000
49	Feed port	BL56141100020	BL56141700020

* means possible broken parts.

** means easy broken part. and spare backup is suggested.

Please confirm the version of manual before placing the purchase order to guarantee that the item number of the spare part is in accordance with the real object.